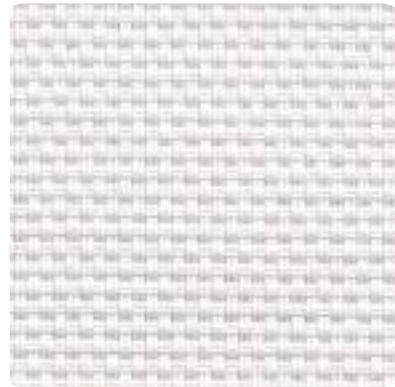




Solvview S1001



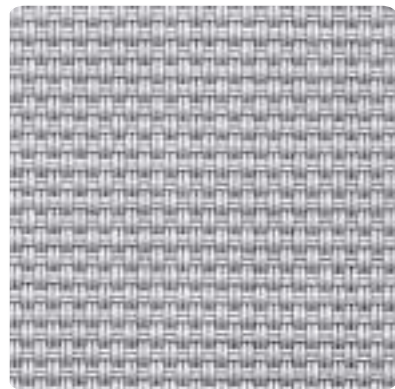
S1001-01
Ice White



S1001-03
Sandstone



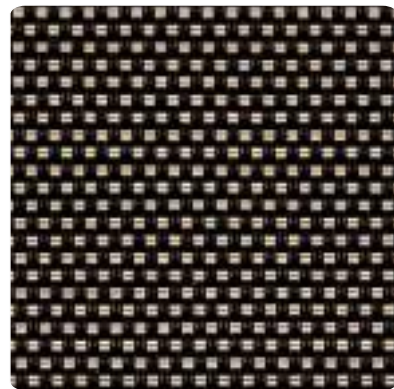
S1001-04
Platinum



S1001-06
Grey



S1001-07
Mocha



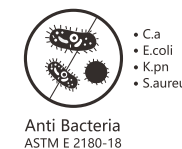
S1001-09
Toffee



S1001-11
Onyx

Openness
Factor **1%**

SERIES	S1001
COMPOSITION	POLYESTER 35% PVC 65%
WIDTH	79"/118" 200/300/CM
WIDTH FOR ICE WHITE	79"/118"/126" 200/300/320/CM
WEIGHT	13.9oz/yd² ± 5% 470g/m² ± 5%
OPENNESS FACTOR	AVERAGE 1%
YARN COUNT WARP	0.012in 0.32mm
YARN COUNTWEFT	0.012n 0.32mm
FABRIC COUNT WARP	64/inch
FABRIC COUNT WEFT	42/inch
THICKNESS	0.025in 0.65mm
TEAR RESISTANCE WARP	63N
TEAR RESISTANCE WEFT	120N
TENSILE STRENGTH WARP	1700N
TENSILE STRENGTH WEFT	1300N
COLOR FASTNESS TO LIGHT	7/8-ISO 105 B02
FLAMMABILITY	NFPA 701(USA)



Solar energetic properties

Ulterio European Standard EN 14501 Calculation G-value according to EN 13363-1+A1:2007		SOLAR ENERGETIC PROPERTIES					VISUAL PROPERTIES	
		FABRIC			FABRIC + GLAZING			
					INTERIOR			
		G-factor = total solar energy transmittance						
OF	Color Code	Ts	Rs	As	C:Gv= 0.59 U = 1.2 W/m ² K	D :Gv= 0.32 U = 1.1 W/m ² K	TV	
1%	STYLE S1001							
	S1001-01	Ice White	18	72	10	0.34	0.24	15
	S1001-03	Sandstone	13	71	16	0.34	0.24	8
	S1001-04	Platinum	8	59	33	0.37	0.25	6
	S1001-06	Grey	6	46	48	0.41	0.26	3
	S1001-07	Mocha	6	42	52	0.43	0.27	4
	S1001-09	Toffee	2	13	85	0.51	0.29	2
	S1001-11	Onyx	2	5	93	0.54	0.30	2

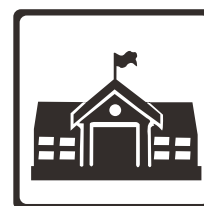
RECOMMENDED USE



Commercial



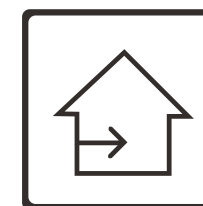
Residential



Schools

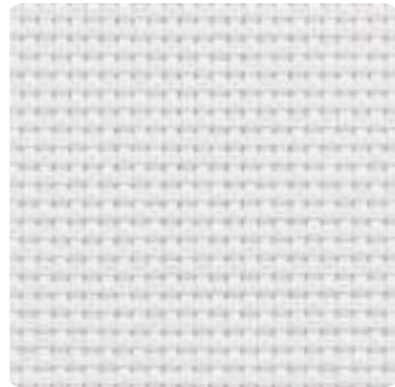


Hospitality



Indoor Use
Only

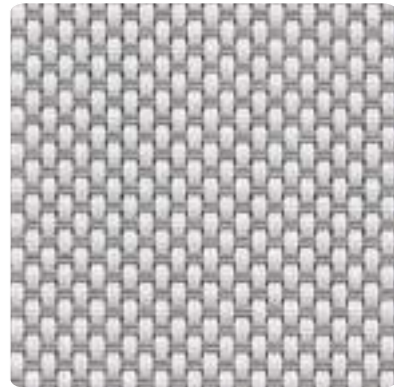
Solviview S1003



S1003-01
Ice White



S1003-03
Sandstone



S1003-04
Platinum



S1003-06
Grey



S1003-07
Mocha



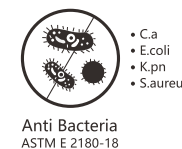
S1003-09
Toffee



S1003-11
Onyx

Openness
Factor **3%**

SERIES	S1003
COMPOSITION	POLYESTER 35% PVC 65%
WIDTH	79"/118" 200/300/CM
WIDTH FOR ICE WHITE	79"/118"/126" 200/300/320/CM
WEIGHT	13.0oz/yd² ± 5% 440g/m² ± 5%
OPENNESS FACTOR	AVERAGE 3%
YARN COUNT WARP	0.012in 0.32mm
YARN COUNTWEFT	0.012n 0.32mm
FABRIC COUNT WARP	54/inch
FABRIC COUNT WEFT	46/inch
THICKNESS	0.025in 0.65mm
TEAR RESISTANCE WARP	70N
TEAR RESISTANCE WEFT	94N
TENSILE STRENGTH WARP	1600N
TENSILE STRENGTH WEFT	1500N
COLOR FASTNESS TO LIGHT	7/8-ISO 105 B02
FLAMMABILITY	NFPA 701(USA)



Solar energetic properties

Ulterio European Standard EN 14501 Calculation G-value according to EN 13363-1+A1:2007		SOLAR ENERGETIC PROPERTIES					VISUAL PROPERTIES	
		FABRIC			FABRIC + GLAZING			
					INTERIOR			
					G-factor = total solar energy transmittance			
OF	Color Code	Ts	Rs	As	C:Gv= 0.59 U = 1.2 W/m ² K	D :Gv= 0.32 U = 1.1 W/m ² K	TV	
3%	STYLE S1003							
	S1003-01	Ice White	18	67	15	0.35	0.25	15
	S1003-03	Sandstone	14	66	20	0.35	0.25	12
	S1003-04	Platinum	13	50	37	0.40	0.26	10
	S1003-06	Grey	9	42	49	0.43	0.27	7
	S1003-07	Mocha	10	34	56	0.45	0.27	8
	S1003-09	Toffee	6	16	78	0.51	0.29	6
	S1003-11	Onyx	6	5	89	0.54	0.30	6

RECOMMENDED USE



Commercial



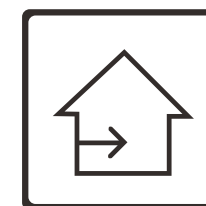
Residential



Schools

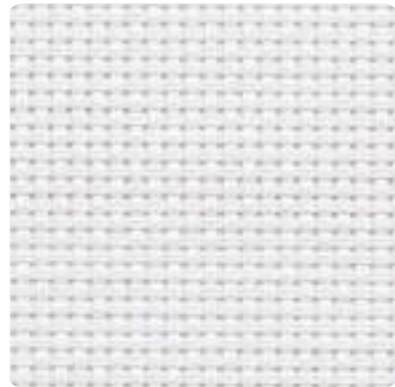


Hospitality

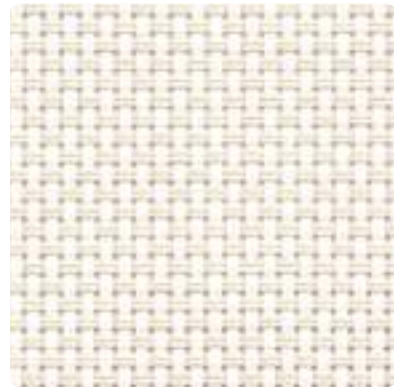


Indoor Use
Only

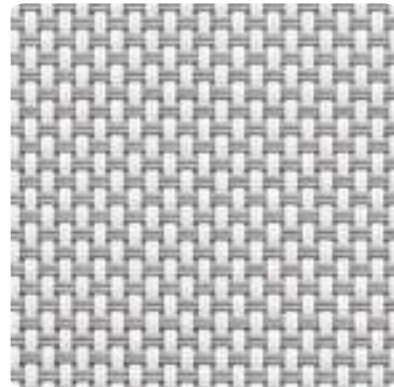
Solview S1005



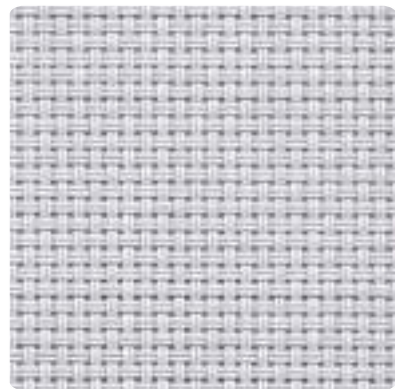
S1005-01
Ice White



S1005-03
Sandstone



S1005-04
Platinum



S1005-06
Grey



S1005-07
Mocha



S1005-09
Toffee



S1005-11
Onyx

Openness
Factor **5%**

SERIES	S1005
COMPOSITION	POLYESTER 35% PVC 65%
WIDTH	79"/118" 200/300/CM
WIDTH FOR ICE WHITE	79"/118"/126" 200/300/320/CM
WEIGHT	12.4oz/yd² ± 5% 420g/m² ± 5%
OPENNESS FACTOR	AVERAGE 5%
YARN COUNT WARP	0.012in 0.32mm
YARN COUNTWEFT	0.012n 0.32mm
FABRIC COUNT WARP	48/inch
FABRIC COUNT WEFT	46/inch
THICKNESS	0.025in 0.65mm
TEAR RESISTANCE WARP	89N
TEAR RESISTANCE WEFT	88N
TENSILE STRENGTH WARP	1500N
TENSILE STRENGTH WEFT	1400N
COLOR FASTNESS TO LIGHT	7/8-ISO 105 B02
FLAMMABILITY	NFPA 701(USA)



- Ca
- E.coli
- K.pn
- S.aureus

Solar energetic properties

Ulterio European Standard EN 14501 Calculation G-value according to EN 13363-1+A1:2007		SOLAR ENERGETIC PROPERTIES					VISUAL PROPERTIES	
		FABRIC			FABRIC + GLAZING			
					INTERIOR			
		G-factor = total solar energy transmittance						
OF	Color Code	Ts	Rs	As	C:Gv= 0.59 U = 1.2 W/m ² K	D :Gv= 0.32 U = 1.1 W/m ² K	TV	
5%	STYLE S1005							
	S1005-01	Ice White	27	68	5	0.35	0.25	23
	S1005-03	Sandstone	21	61	18	0.37	0.25	16
	S1005-04	Platinum	14	47	39	0.41	0.27	12
	S1005-06	Grey	12	42	46	0.43	0.27	10
	S1005-07	Mocha	12	33	55	0.45	0.28	10
	S1005-09	Toffee	10	18	72	0.50	0.29	9
	S1005-11	Onyx	10	5	85	0.54	0.30	9

RECOMMENDED USE



Commercial



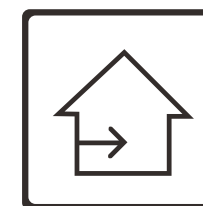
Residential



Schools



Hospitality



Indoor Use
Only



White
YG3009-2235-01



Birch
YG3009-2235-02



Platinum
YG3009-2235-03



Cadet Grey
YG3009-03



Smoke
YG3009-04



Charcoal
YG3009-5



Walnut
YG3009-06



Onyx
YG3009-7

SERIES	YG3009
COMPOSITION	POLYESTER 25% PVC 75%
WIDTH FOR ICE WHITE	79"/118"/126" 200/300/320/CM
WEIGHT	17.6oz/yd² ± 5% 550-600g/m² ± 5%
BLACKOUT RATE	Blackout 99%
FABRIC COUNT WARP	86.5/inch
FABRIC COUNT WEFT	30.5/inch
THICKNESS	0.023in 0.60mm
TEAR RESISTANCE WARP	37N
TEAR RESISTANCE WEFT	190N
TENSILE STRENGTH WARP	2400N
TENSILE STRENGTH WEFT	1100N
COLOR FASTNESS TO LIGHT	7/8-ISO 105 B02
FLAMMABILITY	NFPA 701(USA)

Information contained in this sheet is only indicative and may not be considered as binding
La información contenida en esta hoja es indicativa y no puede ser considerada vinculante.

CUTTING:



Cold

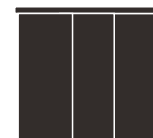


UltrasonicCut

APPLICATIONS:



Roller



Panels

Solar energetic properties

Ulterio European Standard EN 14501 Calculation G-value according to EN 13363-1+A1:2007		SOLAR ENERGETIC PROPERTIES					VISUAL PROPERTIES
		FABRIC			FABRIC + GLAZING		
OF	Color Code	Ts	Rs	As	INTERIOR		TV
					G-factor = total solar energy transmittance		
					C:Gv= 0.59 U = 1.2 W/m ² K	D :Gv= 0.32 U = 1.1 W/m ² K	
STYLE YG3009							
99% Blackout	YG3009-2235-01 White	0	69	31	0.34	0.24	0
	YG3009-2235-02 Birch	0	63	37	0.36	0.25	0
	YG3009-2235-03 Platinum	0	58	42	0.37	0.25	0
	YG3009-03 Cadet Grey	0	27	73	0.47	0.28	0
	YG3009-04 Smoke	0	23	77	0.48	0.28	0
	YG3009-05 Charcoal	0	10	90	0.52	0.29	0
	YG3009-06 Walnut	0	5	95	0.54	0.30	0
	YG3009-07 Onyx	0	6	94	0.54	0.30	0

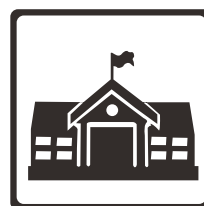
RECOMMENDED USE



Commercial



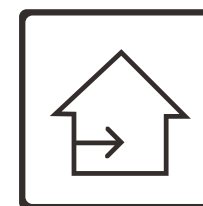
Residential



Schools



Hospitality



Indoor Use
Only



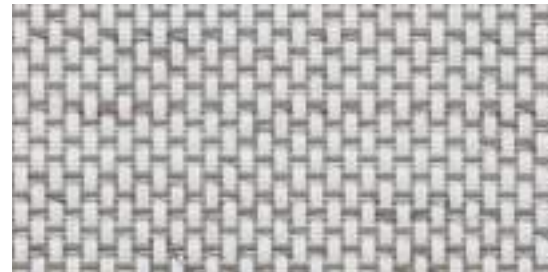
Parchment
SL005-01



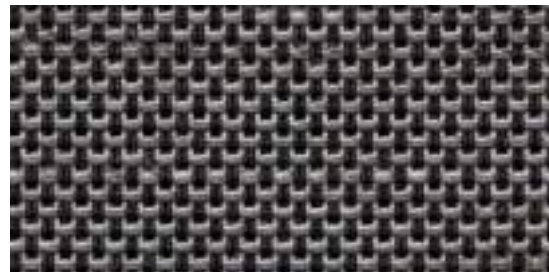
Flax
SL005-02



Wheat
SL005-03



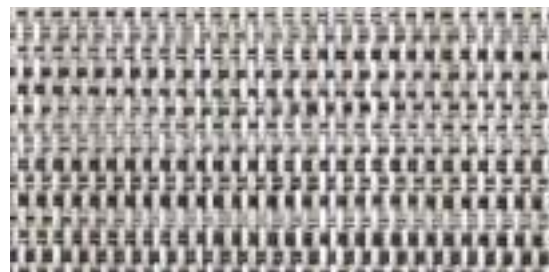
Pebble
SL005-04



Flint
SL005-05



White Grey
S5005-01



Duchess Grey
S5005-02



Bronze
S5005-03

SERIES	SL005	S5005
COMPOSITION	POLYESTER 28%+ PVC 68%+LINEN 4%	POLYESTER 25% PVC 75%
WIDTH FOR ICE WHITE	79"/98"118" 200/250/300CM	79"/118" 200/300CM
WEIGHT	10.6oz/yd² ± 5% 360g/m² ± 5%	12.98oz/yd² ± 5% 440g/m² ± 5%
OPENNESS FACTOR	AVERAGE 5%	AVERAGE 5%
FABRIC COUNT WARP	47/inch	47/inch
FABRIC COUNT WEFT	46.5/inch	45/inch
THICKNESS	0.021in 0.53mm	0.026in 0.67mm
TEAR RESISTANCE WARP	86N	91N
TEAR RESISTANCE WEFT	80N	95N
TENSILE STRENGTH WARP	1400N	1600N
TENSILE STRENGTH WEFT	1200N	1300N
COLOR FASTNESS TO LIGHT	7/8-ISO 105 B02	7/8-ISO 105 B02
FLAMMABILITY	None	NFPA 701(USA)

Information contained in this sheet is only indicative and may not be considered as binding
La información contenida en esta hoja es indicativa y no puede ser considerada vinculante.

CUTTING:



Cold

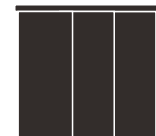


UltrasonicCut

APPLICATIONS:



Roller



Panels

Solar energetic properties

Ulterio European Standard EN 14501 Calculation G-value according to EN 13363-1+A1:2007		SOLAR ENERGETIC PROPERTIES					VISUAL PROPERTIES	
		FABRIC			FABRIC + GLAZING			
					INTERIOR			
					G-factor = total solar energy transmittance			
OF	Color Code	Ts	Rs	As	C:Gv= 0.59 U = 1.2 W/m ² K	D :Gv= 0.32 U = 1.1 W/m ² K	TV	
5%	STYLE SL005							
	SL005-1	Parchment	28	57	15	0.39	0.26	24
	SL005-2	Falx	22	61	17	0.37	0.25	17
	SL005-3	Wheat	24	55	21	0.39	0.26	20
	SL005-4	Pebble	15	49	36	0.41	0.26	13
	SL005-5	Flint	11	14	75	0.51	0.29	10
	STYLE S5005							
	S5005-1	Bronze	15	55	30	0.39	0.26	13
	S5005-2	Duchess Grey	12	28	60	0.47	0.28	11
	S5005-3	White Grey	10	9	81	0.53	0.30	10

RECOMMENDED USE



Commercial



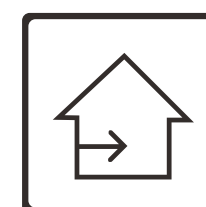
Residential



Schools

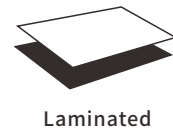


Hospitality



Indoor Use
Only

Solview S1005B



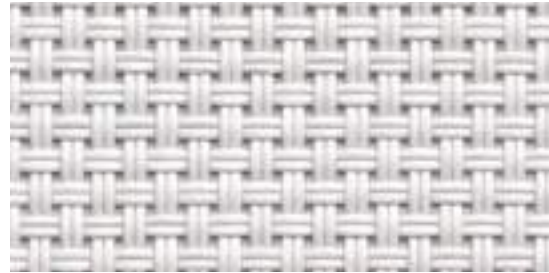
Laminated



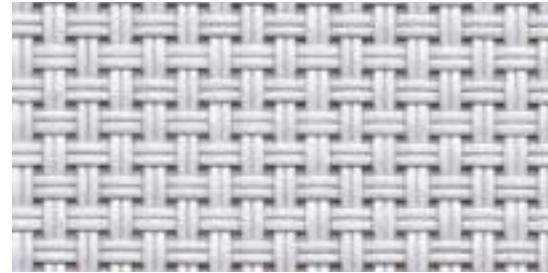
Ice White
S1005B-01



Sandstone
S1005B-03



Silver
S1005B-05



Grey
S1005B-06



Mocha
S1005B-07



Toffee
S1005B-09



Chocolate
S1005B-10



Onyx
S1005B-11

SERIES	S1005B
COMPOSITION	POLYESTER 29%+ PVC 53%+TPU 18%
WIDTH FOR ICE WHITE	79"/118" 200/300CM
WEIGHT	15.0oz/yd² ± 5% 510g/m² ± 5%
BLACKOUT RATE	100%Blackout
FABRIC COUNT WARP	48/inch
FABRIC COUNT WEFT	46/inch
THICKNESS	0.024in 0.60mm
TEAR RESISTANCE WARP	89N
TEAR RESISTANCE WEFT	78N
TENSILE STRENGTH WARP	1500N
TENSILE STRENGTH WEFT	1400N
COLOR FASTNESS TO LIGHT	7/8-ISO 105 B02
FLAMMABILITY	NFPA 701(USA)

Information contained in this sheet is only indicative and may not be considered as binding
La información contenida en esta hoja es indicativa y no puede ser considerada vinculante.

CUTTING:



Cold

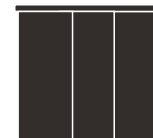


UltrasonicCut

APPLICATIONS:



Roller



Panels

Solar energetic properties

Ulterio European Standard EN 14501 Calculation G-value according to EN 13363-1+A1:2007		SOLAR ENERGETIC PROPERTIES					VISUAL PROPERTIES	
		FABRIC			FABRIC + GLAZING			
					INTERIOR			
					G-factor = total solar energy transmittance			
OF	Color Code	Ts	Rs	As	C:Gv= 0.59 U = 1.2 W/m ² K	D :Gv= 0.32 U = 1.1 W/m ² K	TV	
5%	STYLE S1005B							
	S1005B-01	Ice White	0	73	27	0.33	0.24	0
	S1005B-03	Sandstone	0	70	30	0.34	0.24	0
	S1005B-05	Silver	0	72	28	0.33	0.24	0
	S1005B-06	Grey	0	73	27	0.33	0.24	0
	S1005B-07	Mocha	0	73	27	0.33	0.24	0
	S1005B-09	Toffee	0	74	26	0.32	0.24	0
	S1005B-10	Chocolate	0	74	26	0.32	0.24	0
	S1005B-11	Onyx	0	75	25	0.32	0.24	0

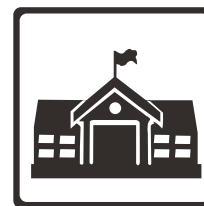
RECOMMENDED USE



Commercial



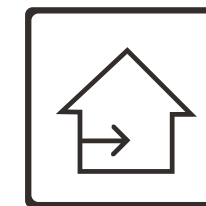
Residential



Schools



Hospitality



Indoor Use
Only

Muralla Blackout



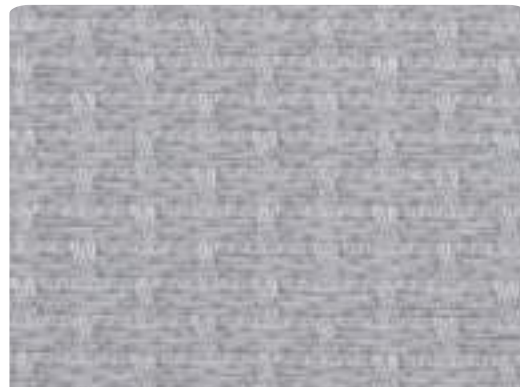
JL15701B
White



JL15702B
Ivory



JL15704B
Light Beige



JL15706B
Grey



JL15710B
Khaki



JL15709B
Black



Composition
100%Polyester



Finished Width
(Ancho)
300cm/118"



Weight
(Peso)
460±5%(g/m²)
13.6±5%(oz/yd²)



Light Fastness
(Solidez a la luz)
≥6Grade
(ISO 105 B02)



Blackout Rate
(Opacidad)
100%



Weft Deviation
(Desviación de trama)
≤1%



Environment
(Medio ambiente)
GREENGUARD



UV Protection

Information contained in this sheet is only indicative and may not be considered as binding
La información contenida en esta hoja es indicativa y no puede ser considerada vinculante.

CUTTING:



Cold

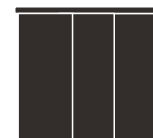


UltrasonicCut

APPLICATIONS:



Roller

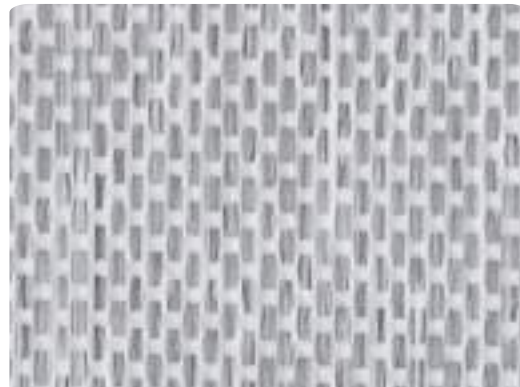


Panels

Dichroic Blackout



JL2112B-1
White



JL2112B-3
Pewter



JL2112B-4
Nimbus



JL2112B-5
Flax



Composition
100%Polyester



Finished Width
(Ancho)
300cm/118"



Weight
(Peso)
400±5%(g/m²)
11.8±5%(oz/yd²)



Light Fastness
(Solidez a la luz)
≥6Grade
(ISO 105 B02)



Blackout Rate
(Opacidad)
100%



Weft Deviation
(Desviación de trama)
≤1%



Environment
(Medio ambiente)
GREENGUARD



UV Protection

Information contained in this sheet is only indicative and may not be considered as binding
La información contenida en esta hoja es indicativa y no puede ser considerada vinculante.

CUTTING:



Cold

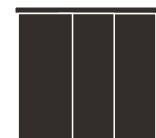


UltrasonicCut

APPLICATIONS:



Roller



Panels

Ansari Blackout



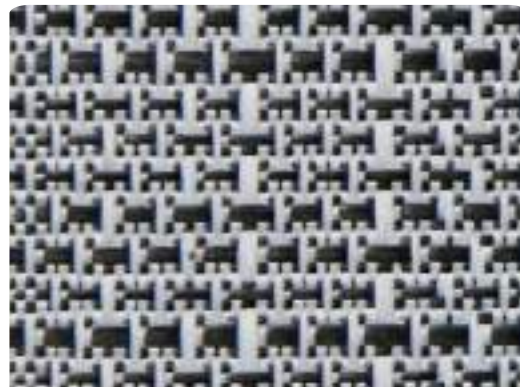
JL6W1
White



JL6W2
Beige



JL6W3
Fog Grey



JL6W4
Stone Grey



JL6W6
Earth Brown



Composition
100%Polyester



Finished Width
(Ancho)
300cm/118"



Weight
(Peso)
410±5%(g/m²)
12.1±5%(oz/yd²)



Light Fastness
(Solidez a la luz)
≥6Grade
(ISO 105 B02)



Blackout Rate
(Opacidad)
100%



Weft Deviation
(Desviación de trama)
≤1%



Environment
(Medio ambiente)
GREENGUARD



UV Protection

Information contained in this sheet is only indicative and may not be considered as binding
La información contenida en esta hoja es indicativa y no puede ser considerada vinculante.

CUTTING:



Cold

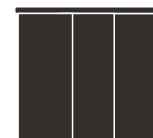


UltrasonicCut

APPLICATIONS:

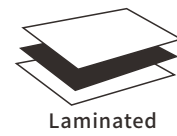


Roller



Panels

Paddington Blackout



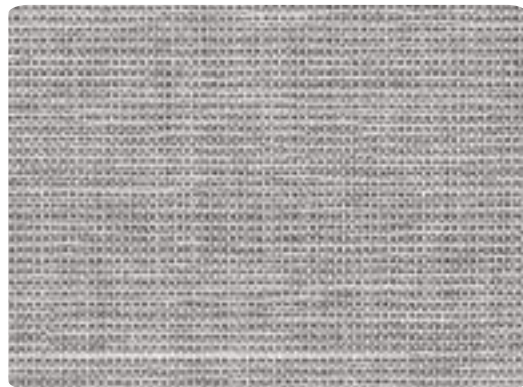
Laminated



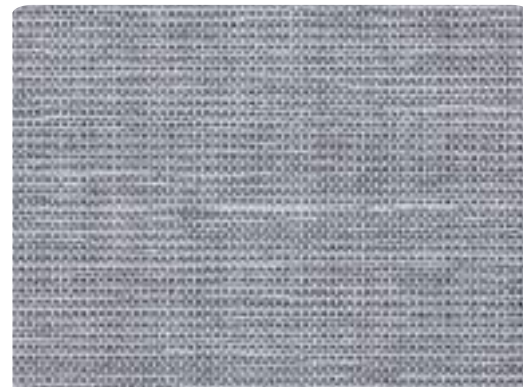
JL1151
Plaster



JL1153
Flax



JL1155
Pebble



JL1156
Shadow



Composition
100%Polyester



Weight
(Peso)
 $355 \pm 5\% (\text{g/m}^2)$
 $10.5 \pm 5\% (\text{oz/yd}^2)$



Blackout Rate
(Opacidad)
100%



Environment
(Medio ambiente)
GREENGUARD



Finished Width
(Ancho)
200cm/280cm
79"/110"



Light Fastness
(Solidez a la luz)
 ≥ 6 Grade
(ISO 105 B02)



Weft Deviation
(Desviación de trama)
 $\leq 1\%$



UV Protection

Information contained in this sheet is only indicative and may not be considered as binding
La información contenida en esta hoja es indicativa y no puede ser considerada vinculante.

CUTTING:



Cold

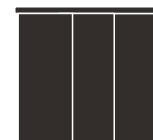


UltrasonicCut

APPLICATIONS:

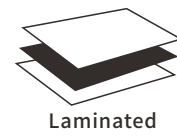


Roller



Panels

Granville Blackout



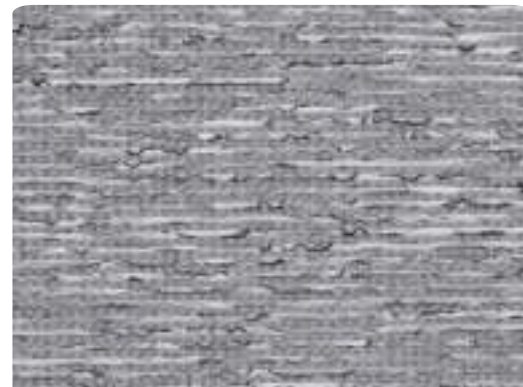
JL1591
Glacier



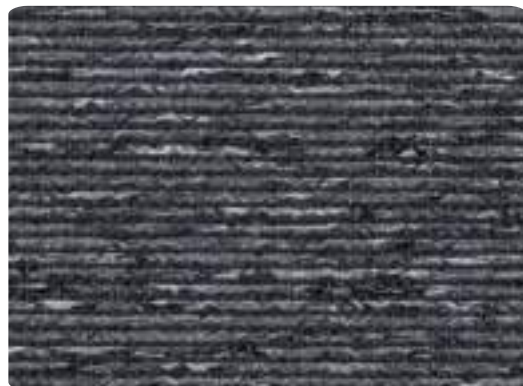
JL1592
Cotton



JL1593
Platinum



JL1594
Ash



JL1595
Raven



JL1596
Flax



Composition
100%Polyester



Finished Width
(Ancho)
300cm/118"



Weight
(Peso)
300±5%(g/m²)
8.8±5%(oz/yd²)



Light Fastness
(Solidez a la luz)
≥6Grade
(ISO 105 B02)



Blackout Rate
(Opacidad)
100%



Weft Deviation
(Desviación de trama)
≤1%



Environment
(Medio ambiente)
GREENGUARD



UV Protection

Information contained in this sheet is only indicative and may not be considered as binding
La información contenida en esta hoja es indicativa y no puede ser considerada vinculante.

CUTTING:



Cold

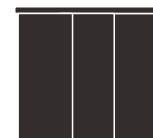


UltrasonicCut

APPLICATIONS:



Roller



Panels

Medlin Blackout



JL8801
Foggy White



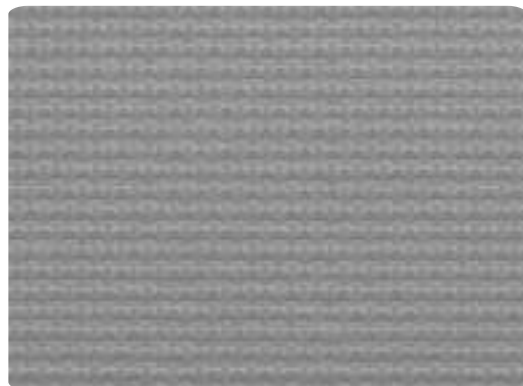
JL8802
Sweet Corn



JL8804
Earth



JL8807
Gray Violet



JL8811
Cement



JL8813
Charcoal



Composition
60%PVC+
40%Fiberglass



Weight
(Peso)
430±5%(g/m²)
12.7±5%(oz/yd²)



Blackout Rate
(Opacidad)
100%



Environment
(Medio ambiente)
GREENGUARD



Finished Width
(Ancho)
183/200/250/300cm
72"/79"/98"/118"



Light Fastness
(Solidez a la luz)
≥6Grade
(ISO 105 B02)



Weft Deviation
(Desviación de trama)
≤1%



UV Protection

Information contained in this sheet is only indicative and may not be considered as binding
La información contenida en esta hoja es indicativa y no puede ser considerada vinculante.

CUTTING:



Cold

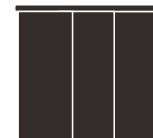


UltrasonicCut

APPLICATIONS:



Roller



Panels

Summerland Light Filtering



JL1561
Flax



JL1562
Sand




JL1563
Echo Dune





JL1564
Blend Nomad




JL1565
Stone Grey


 Composition
95% Polyester+
5% Linen

 Weight
(Peso)
230±5%(g/m²)
6.8±5%(oz/yd²)

 Average Density
(Densidad)
98%

 Environment
(Medio ambiente)
GREENGUARD

 Finished Width
(Ancho)
300/118"

 Light Fastness
(Solidez a la luz)
≥6Grade
(ISO 105 B02)

 Weft Deviation
(Desviación de trama)
≤1%

 UV Protection

Information contained in this sheet is only indicative and may not be considered as binding
La información contenida en esta hoja es indicativa y no puede ser considerada vinculante.

CUTTING:



Cold

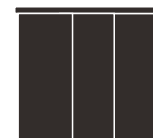


UltrasonicCut

APPLICATIONS:



Roller



Panels


Lino Light Filtering





JL1702
Sand




JL1703
Falx


 Composition
100%Polyester

 Weight
(Peso)
190±5%(g/m²)
5.6±5%(oz/yd²)

 Average Density
(Densidad)
98%

 Environment
(Medio ambiente)
GREENGUARD

 Finished Width
(Ancho)
1702: 215/280cm (85"/110")
1703: 200/280cm (79"/110")

 Light Fastness
(Solidez a la luz)
≥6Grade
(ISO 105 B02)

 Weft Deviation
(Desviación de trama)
≤1%

 UV Protection

Information contained in this sheet is only indicative and may not be considered as binding
La información contenida en esta hoja es indicativa y no puede ser considerada vinculante.

CUTTING:



Cold

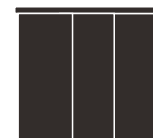


UltrasonicCut

APPLICATIONS:



Roller



Panels

Summerland Blackout



JL1561B
Flax



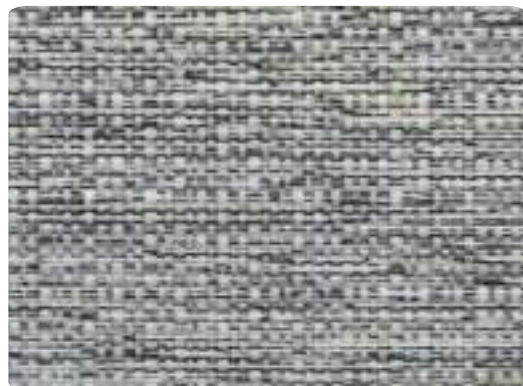
JL1562B
Sand



JL1563B
Echo Dune



JL1564B
Blend Nomad



JL1565B
Stone Grey



Composition
95%Polyester+
5% Linen



Weight
(Peso)
470±5%(g/m²)
13.9±5%(oz/yd²)



Blackout Rate
(Opacidad)
100%



Environment
(Medio ambiente)
GREENGUARD



Finished Width
(Ancho)
300/118"



Light Fastness
(Solidez a la luz)
≥6Grade
(ISO 105 B02)



Weft Deviation
(Desviación de trama)
≤1%



UV Protection

Information contained in this sheet is only indicative and may not be considered as binding
La información contenida en esta hoja es indicativa y no puede ser considerada vinculante.

CUTTING:



Cold

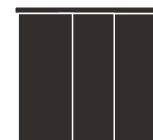


UltrasonicCut

APPLICATIONS:



Roller



Panels

Allegro Light Filtering



JL2502
Cream



JL2503
Khaki



JL2511
Brown



Composition
95%Polyester+
5% Linen



Weight
(Peso)
 $260 \pm 5\%(\text{g/m}^2)$
 $7.7 \pm 5\%(\text{oz/yd}^2)$



Average Density
(Densidad)
95%



Environment
(Medio ambiente)
GREENGUARD



Finished Width
(Ancho)
200/300cm
79"/118"



Light Fastness
(Solidez a la luz)
 ≥ 6 Grade
(ISO 105 B02)



Weft Deviation
(Desviación de trama)
 $\leq 1\%$



UV Protection

Information contained in this sheet is only indicative and may not be considered as binding
La información contenida en esta hoja es indicativa y no puede ser considerada vinculante.

CUTTING:



Cold

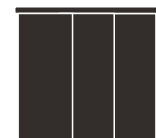


UltrasonicCut

APPLICATIONS:



Roller



Panels

Allegro Blackout




JL15302B
Cream





JL15303B
Khaki




JL15311B
Brown


 Composition
95% Polyester +
5% Linen

 Weight
(Peso)
470±5%(g/m²)
13.9±5%(oz/yd²)

 Blackout Rate
(Opacidad)
100%

 Environment
(Medio ambiente)
GREENGUARD

 Finished Width
(Ancho)
200/300cm
79"/118"

 Light Fastness
(Solidez a la luz)
≥6Grade
(ISO 105 B02)

 Weft Deviation
(Desviación de trama)
≤1%

 UV Protection

Information contained in this sheet is only indicative and may not be considered as binding
La información contenida en esta hoja es indicativa y no puede ser considerada vinculante.

CUTTING:



Cold

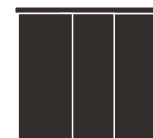


UltrasonicCut

APPLICATIONS:



Roller



Panels

Estuco Blackout



JL2111B-1
Swan



JL2111B-6
Flax



JL2111B-7
Ash



Composition
100%Polyester



Weight
(Peso)
 $410 \pm 5\% (\text{g/m}^2)$
 $12.1 \pm 5\% (\text{oz/yd}^2)$



Blackout Rate
(Opacidad)
100%



Environment
(Medio ambiente)
GREENGUARD



Finished Width
(Ancho)
220/300cm
87"/118"



Light Fastness
(Solidez a la luz)
 ≥ 6 Grade
(ISO 105 B02)



Weft Deviation
(Desviación de trama)
 $\leq 1\%$



UV Protection

Information contained in this sheet is only indicative and may not be considered as binding
La información contenida en esta hoja es indicativa y no puede ser considerada vinculante.

CUTTING:

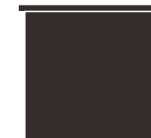


Cold

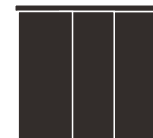


UltrasonicCut

APPLICATIONS:



Roller



Panels

Sydney Blackout



JL7701B
Chalk



JL770LB
Lime stone



JL7706B
Anthracite



JL7712B
Black



Composition
100%Polyester



Weight
(Peso)
370±5%(g/m²)
10.9±5%(oz/yd²)



Blackout Rate
(Opacidad)
100%



Environment
(Medio ambiente)
GREENGUARD



Finished Width
(Ancho)
220/300cm
87"/118"



Light Fastness
(Solidez a la luz)
≥6Grade
(ISO 105 B02)



Weft Deviation
(Desviación de trama)
≤1%



UV Protection

Information contained in this sheet is only indicative and may not be considered as binding
La información contenida en esta hoja es indicativa y no puede ser considerada vinculante.

CUTTING:



Cold

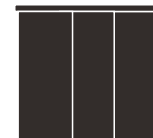


UltrasonicCut

APPLICATIONS:



Roller



Panels

Maderia Light Filtering



JL1521
Flax




JL1522
Mint





JL1523
Dune





JL1524
Chocolate

 Composition
100%Polyester

 Finished Width
(Ancho)
300cm/118"

 Weight
(Peso)
215±5%(g/m²)
6.3±5%(oz/yd²)

 Light Fastness
(Solidez a la luz)
≥6Grade
(ISO 105 B02)

 Average Density
(Densidad)
98%

 Weft Deviation
(Desviación de trama)
≤1%

 Environment
(Medio ambiente)
GREENGUARD

 UV Protection

Information contained in this sheet is only indicative and may not be considered as binding
La información contenida en esta hoja es indicativa y no puede ser considerada vinculante.

CUTTING:



Cold

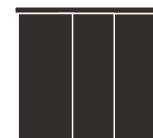


UltrasonicCut

APPLICATIONS:



Roller

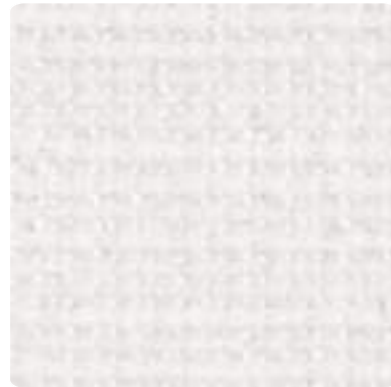


Panels

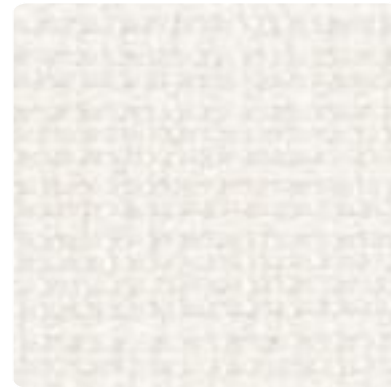
Capetown Light Filtering



JL1490
Ice White



JL1491
Star White



JL1492
Silver Birch



JL1493
Moonstruck



JL1494
December Sky




JL1495
Camel





JL1496
Pewter




JL1497
Black Oyster


 Composition
100%Polyester

 Weight
(Peso)
225±5%(g/m²)
6.6±5%(oz/yd²)

 Average Density
(Densidad)
98%

 Environment
(Medio ambiente)
GREENGUARD

 Finished Width
(Ancho)
300cm/118"

 Light Fastness
(Solidez a la luz)
≥6Grade
(ISO 105 B02)

 Weft Deviation
(Desviación de trama)
≤1%

 UV Protection

Information contained in this sheet is only indicative and may not be considered as binding
La información contenida en esta hoja es indicativa y no puede ser considerada vinculante.

CUTTING:



Cold

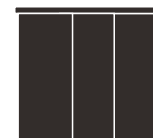


UltrasonicCut

APPLICATIONS:

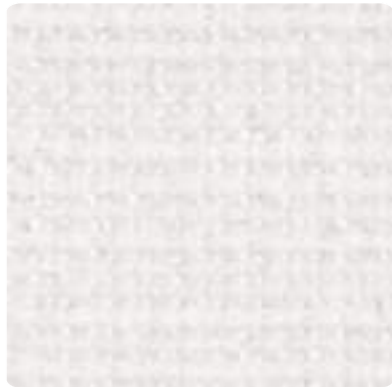


Roller

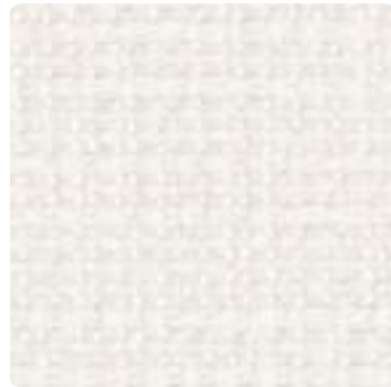


Panels

Capetown Blackout



JL1491B
Star White



JL1492B
Silver Birch



JL1493B
Moonstruck



JL1494B
December Sky



JL1495B
Camel



JL1496B
Pewter



JL1497B
Black Oyster



Composition
100%Polyester



Finished Width
(Ancho)
300cm/118"



Weight
(Peso)
440±5%(g/m²)
13.0±5%(oz/yd²)



Light Fastness
(Solidez a la luz)
≥6Grade
(ISO 105 B02)



Blackout Rate
(Opacidad)
100%



Weft Deviation
(Desviación de trama)
≤1%



Environment
(Medio ambiente)
GREENGUARD



UV Protection

Information contained in this sheet is only indicative and may not be considered as binding
La información contenida en esta hoja es indicativa y no puede ser considerada vinculante.

CUTTING:



Cold

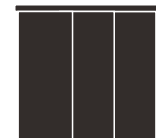


UltrasonicCut

APPLICATIONS:



Roller



Panels

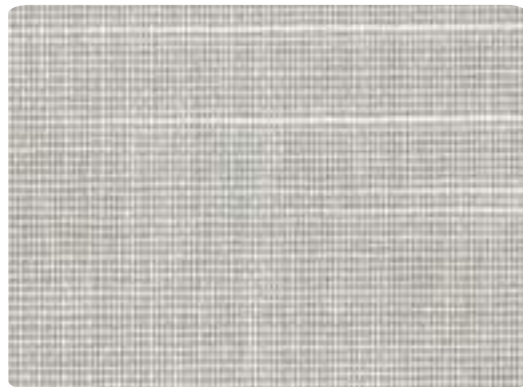
Cambria Light Filtering



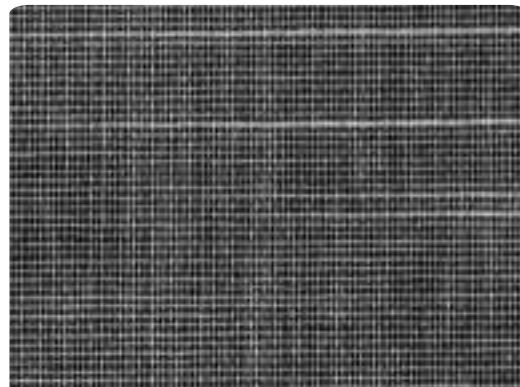
JL29601
Cotton



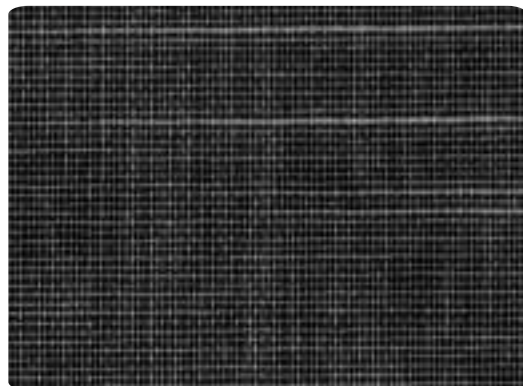
JL29604
Oatmeal




JL29613
Khaki





JL29615
Steel




JL29616
Coal


 **Composition**
100%Polyester

 **Weight (Peso)**
170±5%(g/m²)
5.0±5%(oz/yd²)

 **Average Density (Densidad)**
99%

 **Environment (Medio ambiente)**
GREENGUARD

 **Finished Width (Ancho)**
280cm/110.2"

 **Light Fastness (Solidez a la luz)**
≥6Grade
(ISO 105 B02)

 **Weft Deviation (Desviación de trama)**
≤1%

 **UV Protection**

Information contained in this sheet is only indicative and may not be considered as binding
La información contenida en esta hoja es indicativa y no puede ser considerada vinculante.

CUTTING:



Cold

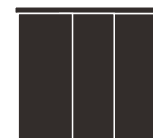


UltrasonicCut

APPLICATIONS:



Roller



Panels

Cambria Blackout



JL29704B
Oatmeal




JL29713B
Khaki





JL29715B
Steel




JL29716B
Coal


 Composition
100%Polyester

 Weight
(Peso)
360±5%(g/m²)
13.6±5%(oz/yd²)

 Blackout Rate
(Opacidad)
100%

 Environment
(Medio ambiente)
GREENGUARD

 Finished Width
(Ancho)
280cm/110.2"

 Light Fastness
(Solidez a la luz)
≥6Grade
(ISO 105 B02)

 Weft Deviation
(Desviación de trama)
≤1%

 UV Protection

Information contained in this sheet is only indicative and may not be considered as binding
La información contenida en esta hoja es indicativa y no puede ser considerada vinculante.

CUTTING:



Cold

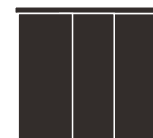


UltrasonicCut

APPLICATIONS:



Roller



Panels

Baltimore Light Filtering



JL13701
Porcelain



JL13702
Cream



JL13703
Platinum



JL13704
Birch



JL13705
Putty



JL13706
Pebble



JL13707
Copper




JL13708
Anthracite





JL13709
Bronze





JL13710
Flint

 Composition
100% Polyester

 Finished Width (Ancho)
300cm/118"

 Weight (Peso)
210±5%(g/m²)
6.2±5%(oz/yd²)

 Light Fastness (Solidez a la luz)
≥6Grade
(ISO 105 B02)

 Average Density (Densidad)
95%

 Weft Deviation (Desviación de trama)
≤1%

 Environment (Medio ambiente)
GREENGUARD

 UV Protection

Information contained in this sheet is only indicative and may not be considered as binding
La información contenida en esta hoja es indicativa y no puede ser considerada vinculante.

CUTTING:



Cold

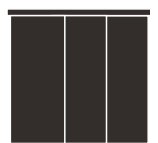


UltrasonicCut

APPLICATIONS:



Roller



Panels

Baltimore Blackout



JL13701B
Porcelain



JL13702B
Cream



JL13703B
Platinum



JL13704B
Birch



JL13705B
Putty



JL13706B
Pebble



JL13707B
Copper



JL13708B
Anthracite



JL13709B
Bronze



JL13710B
Flint



Composition
100%Polyester



Finished Width
(Ancho)
300cm/118"



Weight
(Peso)
530±5%(g/m²)
15.6±5%(oz/yd²)



Light Fastness
(Solidez a luz)
≥6Grade
(ISO 105 B02)



Blackout Rate
(Opacidad)
100%



Weft Deviation
(Desviación de trama)
≤1%



Environment
(Medio ambiente)
GREENGUARD



UV Protection

Information contained in this sheet is only indicative and may not be considered as binding
La información contenida en esta hoja es indicativa y no puede ser considerada vinculante.

CUTTING:



Cold

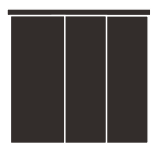


UltrasonicCut

APPLICATIONS:



Roller



Panels

Bermuda Light Filtering



JL14700
Snow



JL14701
Stella



JL14703
Pearl



JL14705
Terrace




JL14709
Toffee





JL14710
Grey




JL14711
Basalt


 Composition
100%Polyester

 Weight
(Peso)
210±5%(g/m²)
6.2±5%(oz/yd²)

 Average Density
(Densidad)
95%

 Environment
(Medio ambiente)
GREENGUARD

 Finished Width
(Ancho)
300cm/118"

 Light Fastness
(Solidez a la luz)
≥6Grade
(ISO 105 B02)

 Weft Deviation
(Desviación de trama)
≤1%

 UV Protection

Information contained in this sheet is only indicative and may not be considered as binding
La información contenida en esta hoja es indicativa y no puede ser considerada vinculante.

CUTTING:



Cold

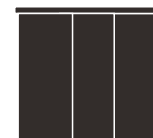


UltrasonicCut

APPLICATIONS:



Roller

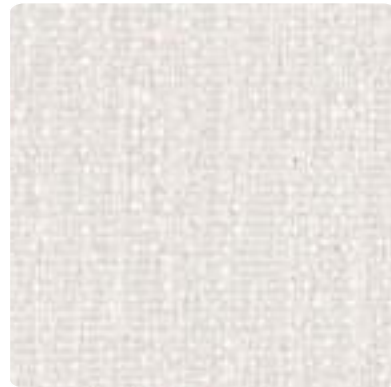


Panels

Bermuda Blackout



JL14701B
Stella



JL14702B
Oyster



JL14705B
Terrace




JL14709B
Toffee





JL14710B
Grey




JL14711B
Basalt


 Composition
100%Polyester

 Weight
(Peso)
430±5%(g/m²)
12.6±5%(oz/yd²)

 Blackout Rate
(Opacidad)
100%

 Environment
(Medio ambiente)
GREENGUARD

 Finished Width
(Ancho)
300cm/118"

 Light Fastness
(Solidez a la luz)
≥6Grade
(ISO 105 B02)

 Weft Deviation
(Desviación de trama)
≤1%

 UV Protection

Information contained in this sheet is only indicative and may not be considered as binding
La información contenida en esta hoja es indicativa y no puede ser considerada vinculante.

CUTTING:



Cold

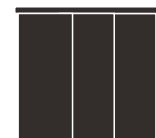


UltrasonicCut

APPLICATIONS:



Roller



Panels

Abura Light Filtering



JL1621
Swan



JL1622
Linen



JL1623
Vanilla



JL1624
Straw



JL1625
Caribou




JL1626
Bliss Smoke





JL1627
Bliss Smoke




JL1628
Blend Coal


 Composition
100%Polyester

 Weight
(Peso)
245±5%(g/m²)
7.2±5%(oz/yd²)

 Average Density
(Densidad)
98%

 Environment
(Medio ambiente)
GREENGUARD

 Finished Width
(Ancho)
300cm/118"

 Light Fastness
(Solidez a la luz)
≥6Grade
(ISO 105 B02)

 Weft Deviation
(Desviación de trama)
≤1%

 UV Protection

Information contained in this sheet is only indicative and may not be considered as binding
La información contenida en esta hoja es indicativa y no puede ser considerada vinculante.

CUTTING:



Cold

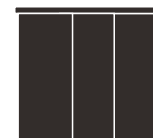


UltrasonicCut

APPLICATIONS:



Roller



Panels

Abura Blackout



JL1621B
Swan



JL1622B
Linen



JL1623B
Vanilla



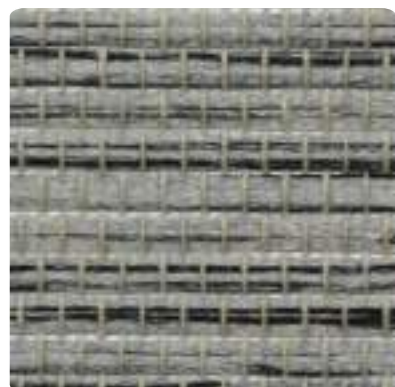
JL1624B
Straw



JL1625B
Caribou




JL1626B
Bliss Smoke





JL1627B
Bliss Smoke




JL1628B
Blend Coal


 Composition
100%Polyester


 Weight
(Peso)
305±5%(g/m²)
9.0±5%(oz/yd²)

 Blackout Rate
(Opacidad)
100%

 Environment
(Medio ambiente)
GREENGUARD

 Finished Width
(Ancho)
300cm/118"

 Light Fastness
(Solidez a la luz)
≥6Grade
(ISO 105 B02)

 Weft Deviation
(Desviación de trama)
≤1%

 UV Protection

Information contained in this sheet is only indicative and may not be considered as binding
La información contenida en esta hoja es indicativa y no puede ser considerada vinculante.

CUTTING:



Cold

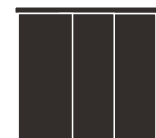


UltrasonicCut

APPLICATIONS:



Roller

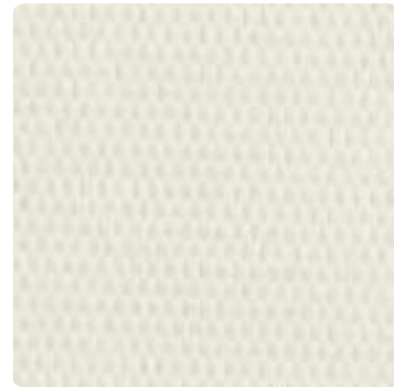


Panels

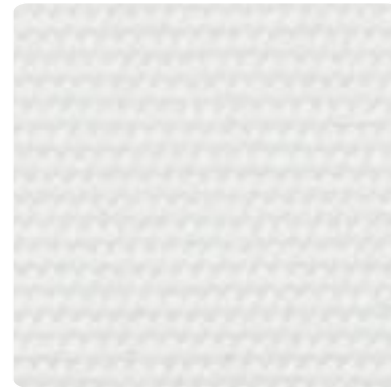
Lanai Blackout



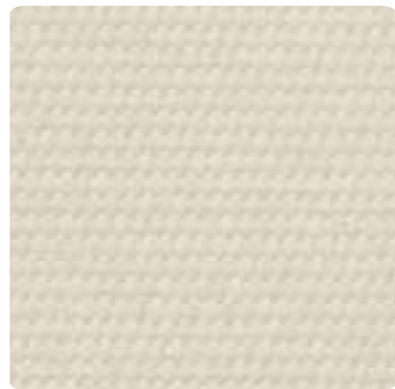
JL0031
Ice White



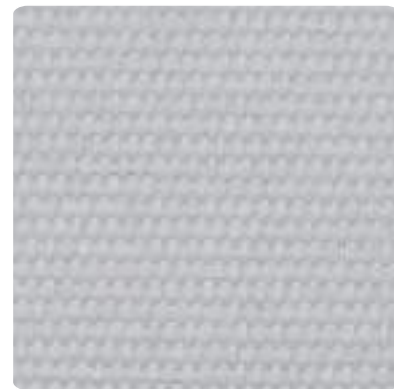
JL0032
Calico



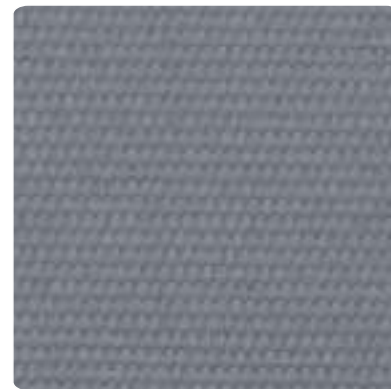
JL0033
Ivory



JL0034
Vanilla



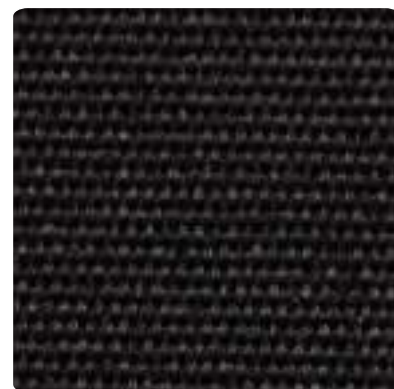
JL0035
Lt Grey




JL0036
Dk Grey





JL0037
Chocolate




JL0038
Graphite


 Composition
100%Polyester


 Weight
(Peso)
410±5%(g/m²)
12.1 ±5%(oz/yd²)

 Blackout Rate
(Opacidad)
100%

 Environment
(Medio ambiente)
GREENGUARD

 Finished Width
(Ancho)
300cm/118"

 Light Fastness
(Solidez a la luz)
≥6Grade
(ISO 105 B02)

 Weft Deviation
(Desviación de trama)
≤1%

 UV Protection

Information contained in this sheet is only indicative and may not be considered as binding
La información contenida en esta hoja es indicativa y no puede ser considerada vinculante.

CUTTING:



Cold

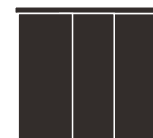


UltrasonicCut

APPLICATIONS:



Roller



Panels



ZEBRA BLINDS





LIGHT FILTERING ZEBRA BLINDS





ZEBRA BLINDS

Bella (Light Filtering)

Windows Skin



RS20287-1
Glacler



RS20287-2
Could



RS20287-3
Mint



RS20287-4
Silver



RS20287-5
Ash

Composition: **Polyester 100%**

Finished Width: **300cm/118"**

Weight M²: **100±5%(g/m²)**
3.0±5%(oz/yd²)

Repeat: **10cm(Solid)x7.0cm(Sheer)**

Light Fastness: **≥6Grade** (ISO 105 B02)

ZEBRA BLINDS

Bella (Light Filtering)

Windows Skin



RS20287-6
Smoke



RS20287-7
Raven



RS20287-8
Flax



RS20287-9
Platinum



RS20287-10
Steel Gray

Composition: **Polyester 100%**

Finished Width: **300cm/118"**

Weight M²: **100±5%(g/m²)**
3.0±5%(oz/yd²)

Repeat: **10cm(Solid)x7.0cm(Sheer)**

Light Fastness: **≥6Grade** (ISO 105 B02)

ZEBRA BLINDS

Bella (Light Filtering)

Windows Skin



RS20287-11
Anchracite



RS20287-12
Birch



RS20287-13
Wheat



RS20287-14
Dove



RS20287-16
Brown

Composition: **Polyester 100%**

Finished Width: **300cm/118"**

Weight M²: **100±5%(g/m²)**
3.0±5%(oz/yd²)

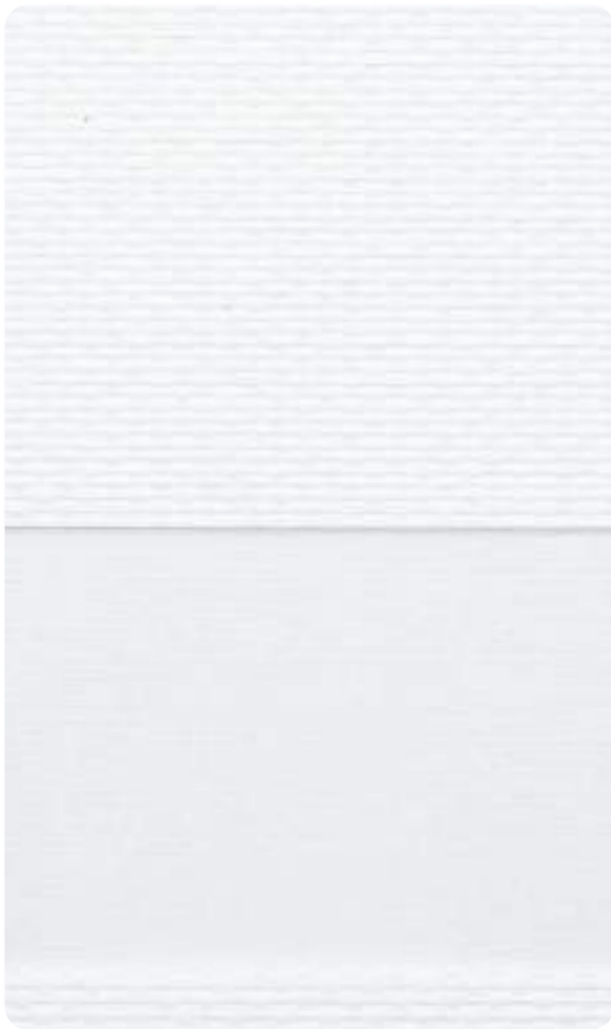
Repeat: **10cm(Solid)x7.0cm(Sheer)**

Light Fastness: **≥6Grade** (ISO 105 B02)

ZEBRA BLINDS

Cory (Light Filtering)

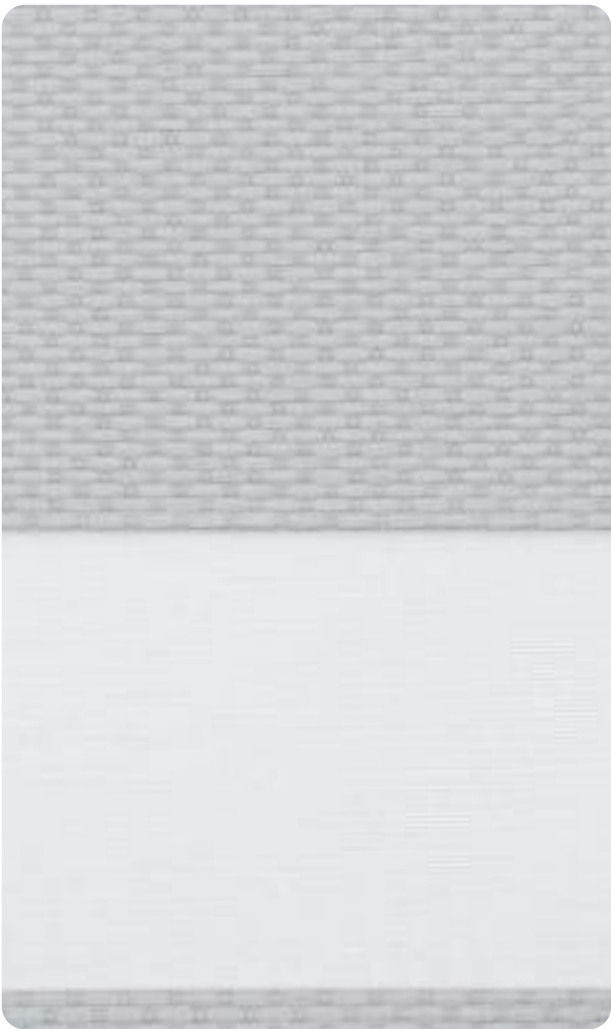
Windows Skin



RS20282-1
Swan



RS20282-2
Ivory



RS20282-3
Silver

Composition: **Polyester 100%**

Finished Width: **300cm/118"**

Weight M²: **170±5%(g/m²)**
5.2±5%(oz/yd²)

Repeat: **8.5cm(Solid)x5.5cm(Sheer)**

Light Fastness: **≥6Grade** (ISO 105 B02)

ZEBRA BLINDS

Hila (Light Filtering)

Windows Skin



RS20281-1
Pearl



RS20281-2
Vanilla



RS20281-3
Dupione latte



RS20281-4
Nimbus



RS20281-5
Smoke



RS20281-6
Anthracite

Composition: **Polyester 100%**

Finished Width: **300cm/118"**

Weight M²: **130±5%(g/m²)**
3.8±5%(oz/yd²)

Repeat: **8.5cm(Solid)x5.5cm(Sheer)**

Light Fastness: **≥6Grade** (ISO 105 B02)

ZEBRA BLINDS

Glamor (Light Filtering)

Windows Skin



RS20280-1
Chalk



RS20280-2
Eggshell



RS20280-3
Flax



RS20280-4
Platinum

Composition: **Polyester 100%**

Finished Width: **300cm/118"**

Weight M²: **160±5%(g/m²)**
4.7±5%(oz/yd²)

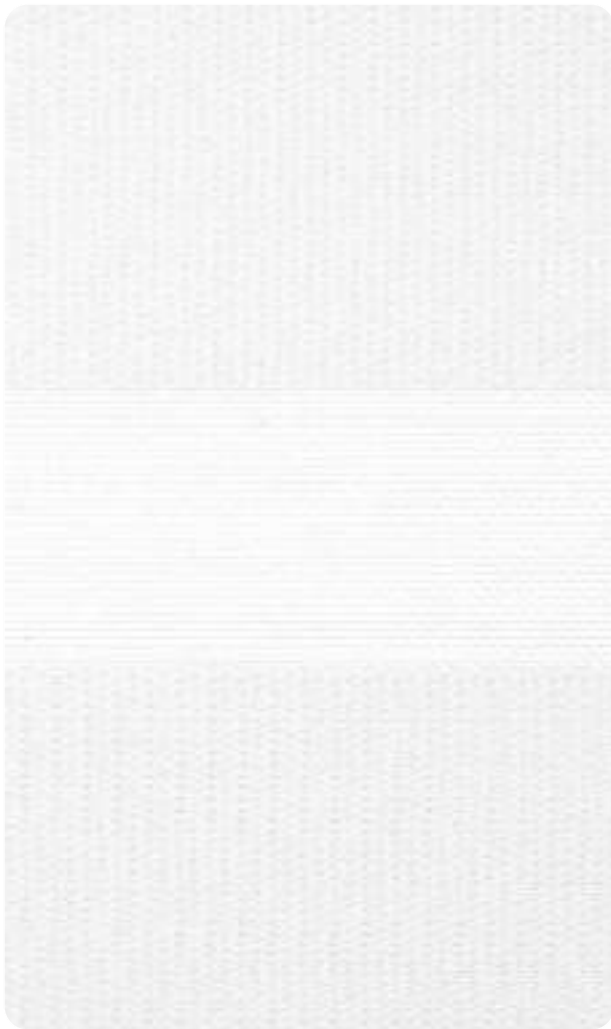
Repeat: **8.5cm(Solid)x5.5cm(Sheer)**

Light Fastness: **≥6Grade** (ISO 105 B02)

ZEBRA BLINDS

Duscha (Light Filtering)

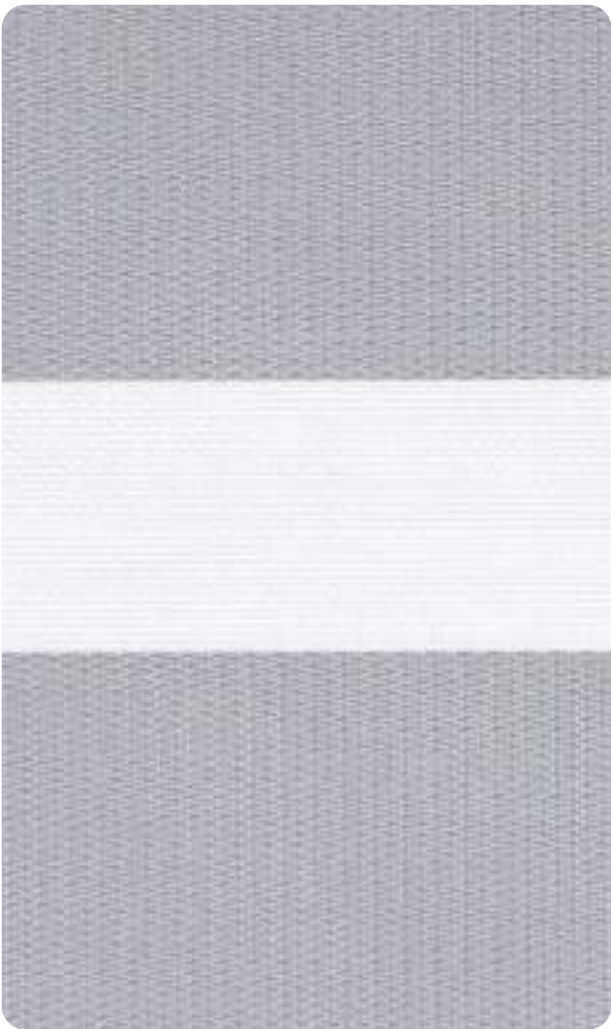
Windows Skin



RS2218-1
Swan



RS2218-3
Wheat



RS2218-7
Silver

Composition: **Polyester 35% + PVC 65%**

Finished Width: **183/200/250/300cm**
72"/79"/98"/118"

Weight M²: **250 ± 5% (g/m²)**
7.4 ± 5% (oz/yd²)

Repeat: **7.5cm (Solid) x 5.0cm (Sheer)**

Light Fastness: **≥ 6 Grade** (ISO 105 B02)

ZEBRA BLINDS

Duscha (Light Filtering)

Windows Skin



RS2219-1
Vanilla Ice



RS2219-4
Steel Grey



RS2219-5
Black Olive

Composition: **Polyester35%+PVC65%**

Finished Width: **183/200/250/300cm**
72"/79"/98"/118"

Weight M²: **250±5%(g/m²)**
7.4±5%(oz/yd²)

Repeat: **7.5cm(Solid)x5.0cm(Sheer)**

Light Fastness: **≥6Grade** (ISO 105 B02)

ZEBRA BLINDS

Verona (Light Filtering)

Windows Skin



RS2255-1
Foggy



RS2255-3
Oyester



RS2255-4
Wheat



RS2255-5
Straw



RS2255-8
Pebble



RS2255-10
Flint

Composition: **Polyester100%**

Finished Width: **300cm/118"**

Weight M²: **125±5%(g/m²)**
3.7±5%(oz/yd²)

Repeat: **7.5cm(Solid)x5.0cm(Sheer)**

Light Fastness: **≥6Grade** (ISO 105 B02)

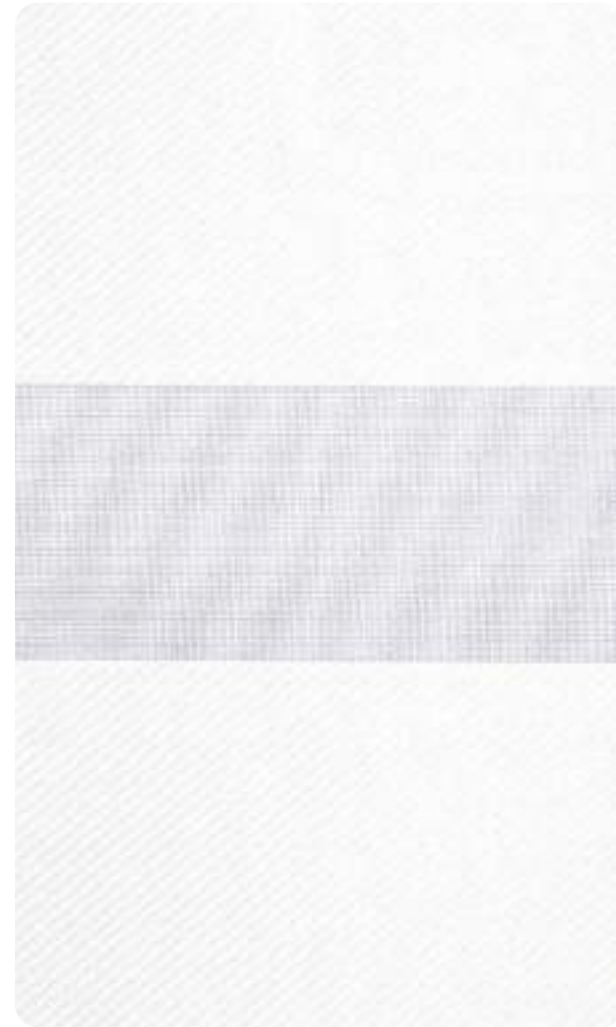
ZEBRA BLINDS

Bredon (Light Filtering)

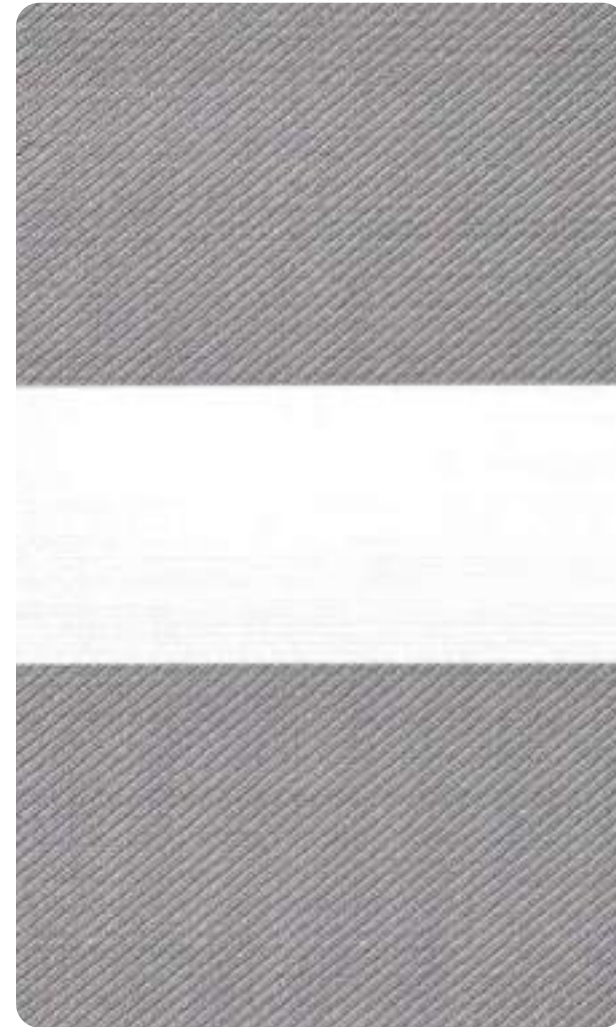
Windows Skin



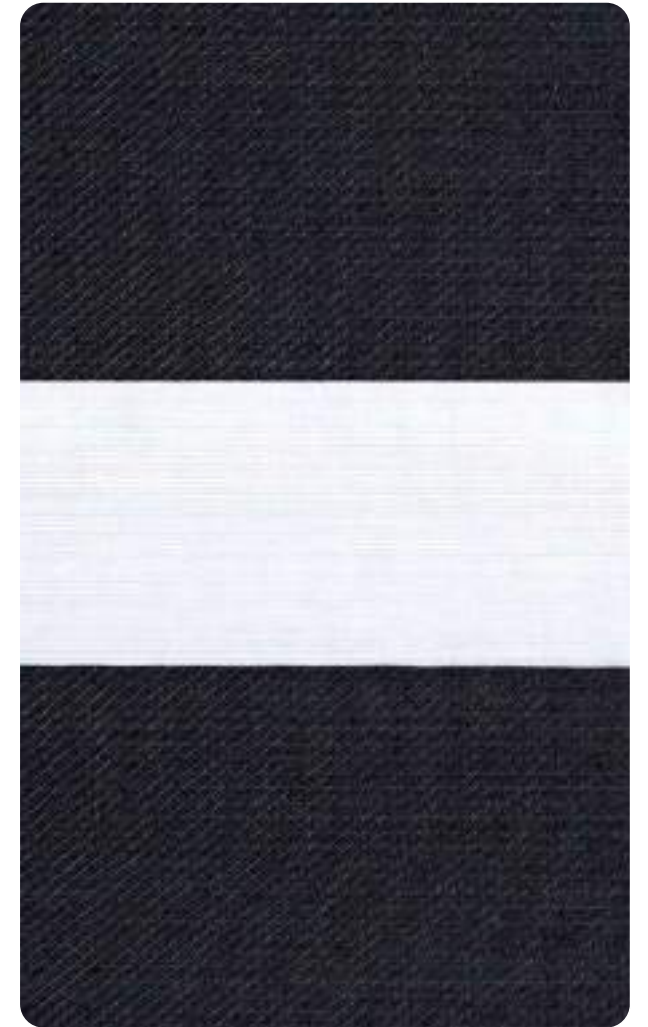
RS2216-1
Winter White



RS2216-2
Ivory



RS2216-4
Silver



RS2216-7
Black

Composition: **Polyester 100%**

Finished Width: **300cm/118"**

Weight M²: **90±5%(g/m²)**
2.7±5%(oz/yd²)

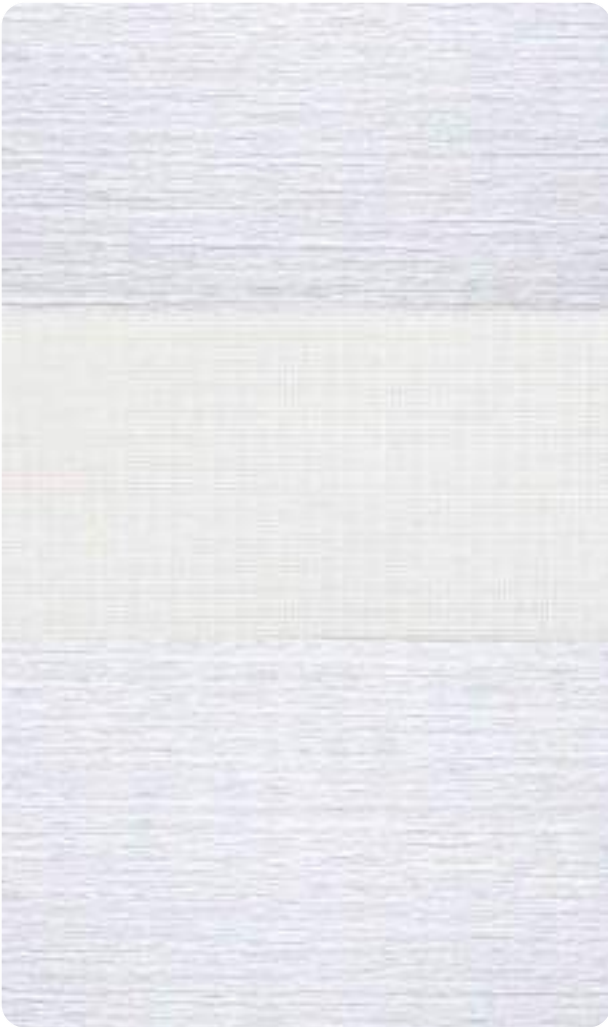
Repeat: **7.5cm(Solid)x5.0cm(Sheer)**

Light Fastness: **≥6Grade** (ISO 105 B02)

ZEBRA BLINDS

Toscana (Light Filtering)

Windows Skin



RS2235-1
Glacier



RS2235-2
Rich Cream



RS2235-3
Pebble

Composition: **Polyester 100%**

Finished Width: **300cm/118"**

Weight M²: **125±5%(g/m²)**
3.7±5%(oz/yd²)

Repeat: **7.5cm(Solid)x5.0cm(Sheer)**

Light Fastness: **≥6Grade** (ISO 105 B02)

ZEBRA BLINDS

Furze (Light Filtering)

Windows Skin



RS2269-1
Alabaster



RS2269-2
Flax



RS2269-3
Chestnut



RS2269-4
Anthracite

Composition: **Polyester 100%**

Finished Width: **300cm/118"**

Weight M²: **160±5%(g/m²)**
4.7±5%(oz/yd²)

Repeat: **7.5cm(Solid)x5.0cm(Sheer)**

Light Fastness: **≥6Grade** (ISO 105 B02)



BLACKOUT ZEBRA BLINDS



ZEBRA BLINDS

Rossoni(Blackout)

Windows Skin



RS20288-1
Swan



RS20288-2
Could



RS20288-3
Silver



RS20288-4
Ash



RS20288-5
Seagull



RS20288-6
Platinum

Composition:**Polyester100%**

Finished Width:**300cm/118"**

Weight M²:**220±5%(g/m²)**
6.5±5%(oz/yd²)

Repeat:**10.0cm(Solid)x7.0cm(Sheer)**

Light Fastness:**≥6Grade** (ISO 105 B02)

ZEBRA BLINDS

Rossoni(Blackout)

Windows Skin



RS20288-7
Steel Gray



RS20288-8
Anchracite



RS20288-9
Birch



RS20288-10
Wheat



RS20288-11
Dove



RS20288-13
Brown

Composition:**Polyester100%**

Finished Width:**300cm/118"**

Weight M²:**220±5%(g/m²)**
6.5±5%(oz/yd²)

Repeat:**10.0cm(Solid)x7.0cm(Sheer)**

Light Fastness:**≥6Grade** (ISO 105 B02)

ZEBRA BLINDS



Emilia (Blackout)

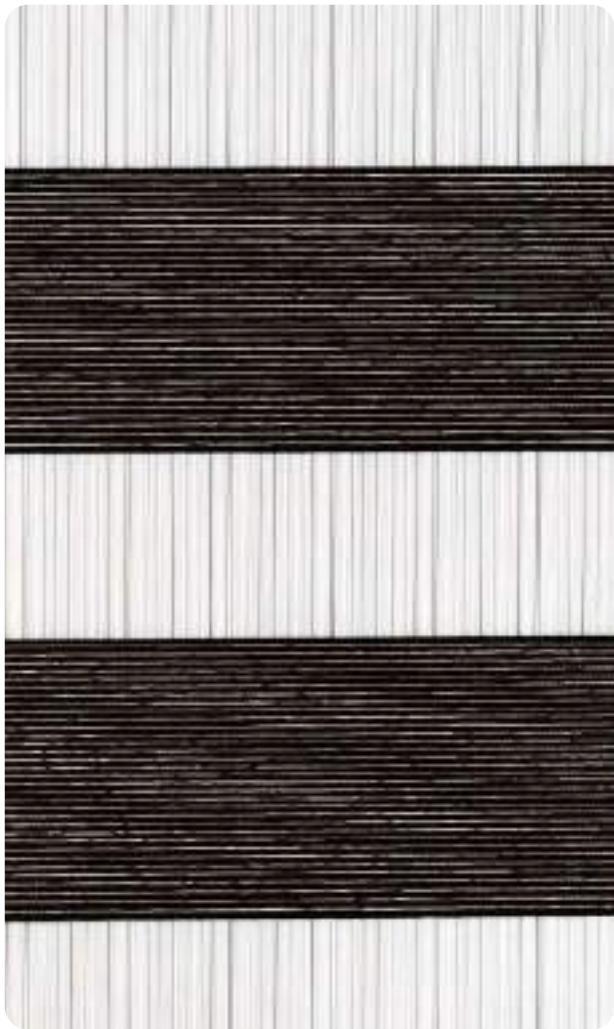
Windows Skin



FRS2157B-1
Silver



FRS2157B-4
Platinum



FRS2157B-5
Bronze

Composition: **Polyester 100%**

Finished Width: **300cm/118"**

Weight M²: **210±5%(g/m²)**
6.2±5%(oz/yd²)

Repeat: **7.5 cm(Solid)x5.0cm(Sheer)**

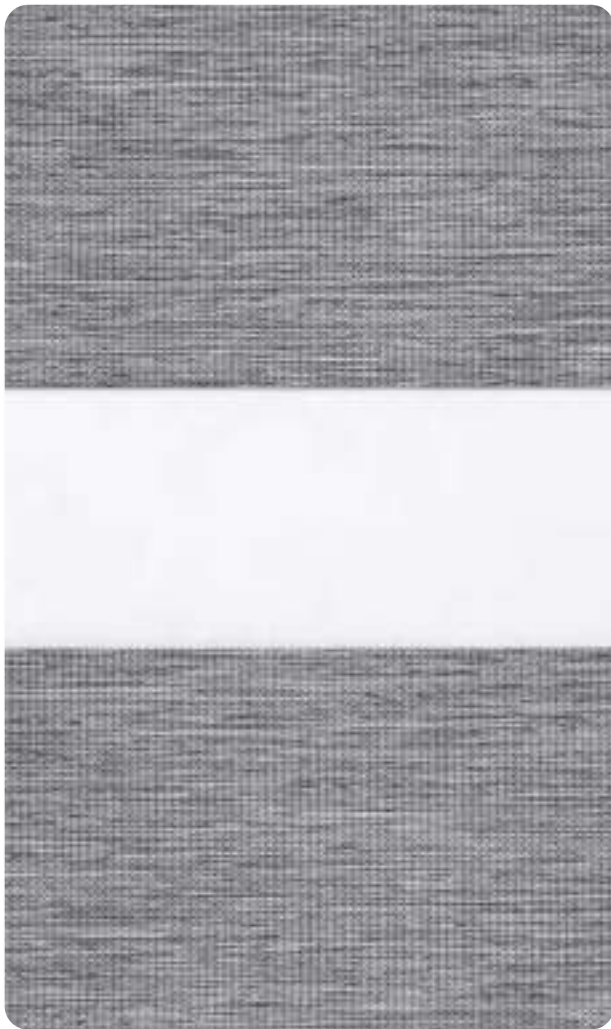
Light Fastness: **≥6Grade** (ISO 105 B02)

ZEBRA BLINDS

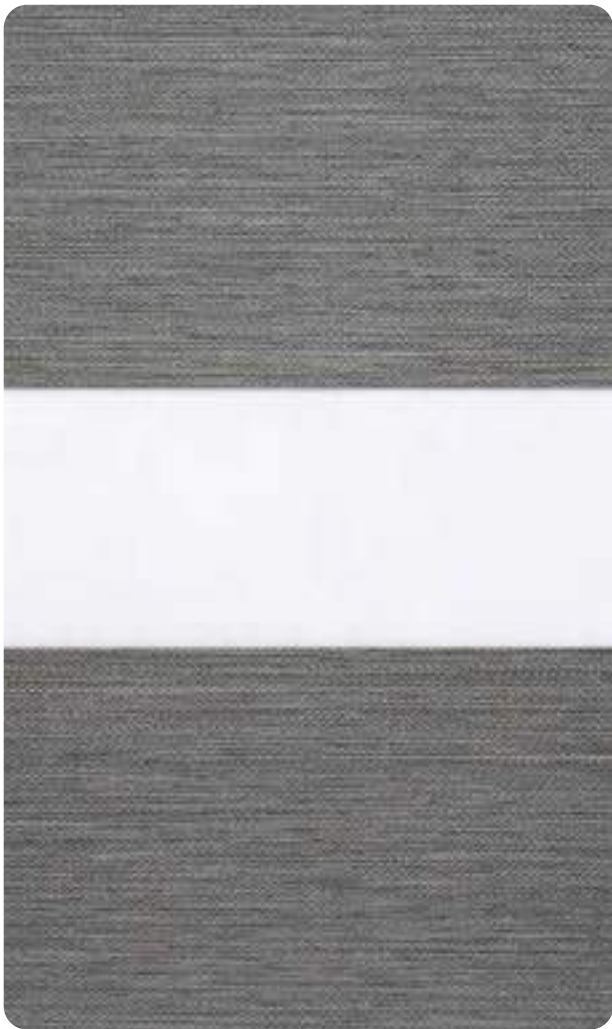


Chelsea(Blackout)

Windows Skin



FRS2020B-4
Smoke



FRS2020B-5
Ash



FRS2020B-6
Raffia

Composition:**Polyester100%**

Finished Width:**300cm/118"**

Weight M²:**160±5%(g/m²)**
4.7±5%(oz/yd²)

Repeat:**8.5cm(Solid)x5.5cm(Sheer)**

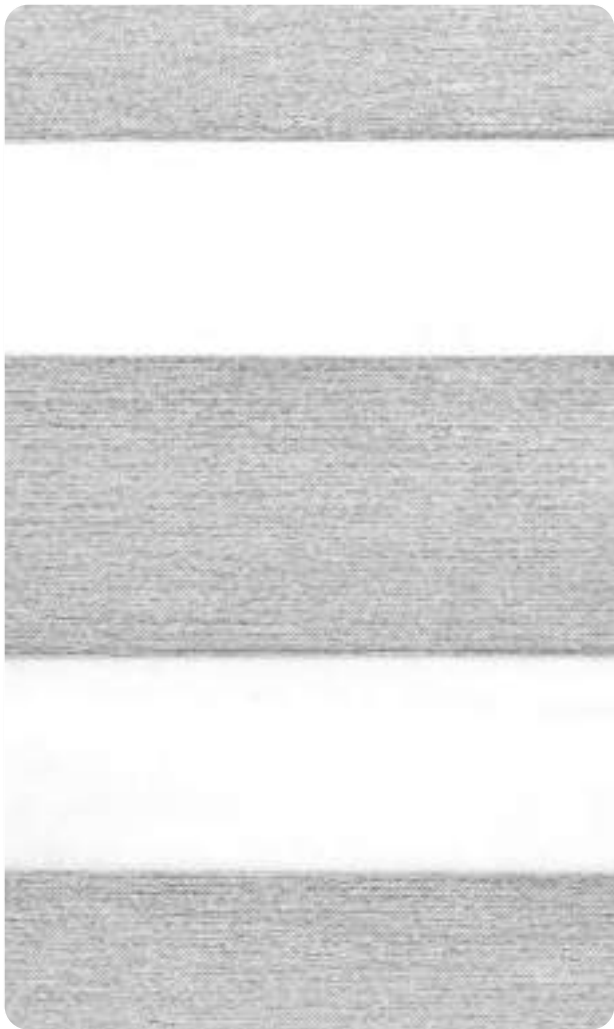
Light Fastness:**≥6Grade** (ISO 105 B02)

ZEBRA BLINDS



Shimmer(Blackout)

Windows Skin



FRS20113B-1
Mist Grey



FRS20113B-2
Desert



FRS20113B-7
Nimbus

Composition:**Polyester100%**

Finished Width:**300cm/118"**

Weight M²:**165±5%(g/m²)**
4.9±5%(oz/yd²)

Repeat:**7.7 cm(Solid)x5.2cm(Sheer)**

Light Fastness:**≥6Grade** (ISO 105 B02)

ZEBRA BLINDS

Riviera (Blackout)

Windows Skin



RS2242B-1
Dove



RS2242B-3
Wheat



RS2242B-9
Platinum



RS2242B-10
Frost Gray



RS2242B-12
Smoke



RS2242B-15
Sisal

Composition: **Polyester 100%**

Finished Width: **300cm/118"**

Weight M²: **170±5%(g/m²)**
5.0±5%(oz/yd²)

Repeat: **10.0cm(Solid)x7.0cm(Sheer)**

Light Fastness: **≥6Grade** (ISO 105 B02)

ZEBRA BLINDS

Bahamas(Blackout)

Windows Skin



RS2241B-1
Swan



RS2241B-2
Cloud



RS2241B-5
Silver



RS2241-6
Smoke



RS2241B-7
Almond



RS2241B-11
Raven

Composition:**Polyester100%**

Finished Width:**300cm/118"**

Weight M²:**190±5%(g/m²)**
5.6±5%(oz/yd²)

Repeat:**10.0cm(Solid)x7.0cm(Sheer)**

Light Fastness:**≥6Grade** (ISO 105 B02)

ZEBRA BLINDS

Hollow (Light Filtering)

Windows Skin



RS20212-1
Chalk



RS20212-2
Linen



RS20212-3
Ocean



RS20212-4
Silver



RS20212-5
Ash



RS20212-6
Raven

Composition: **Polyester 100%**

Finished Width: **300cm/118"**

Weight M²: **160±5%(g/m²)**
4.7±5%(oz/yd²)

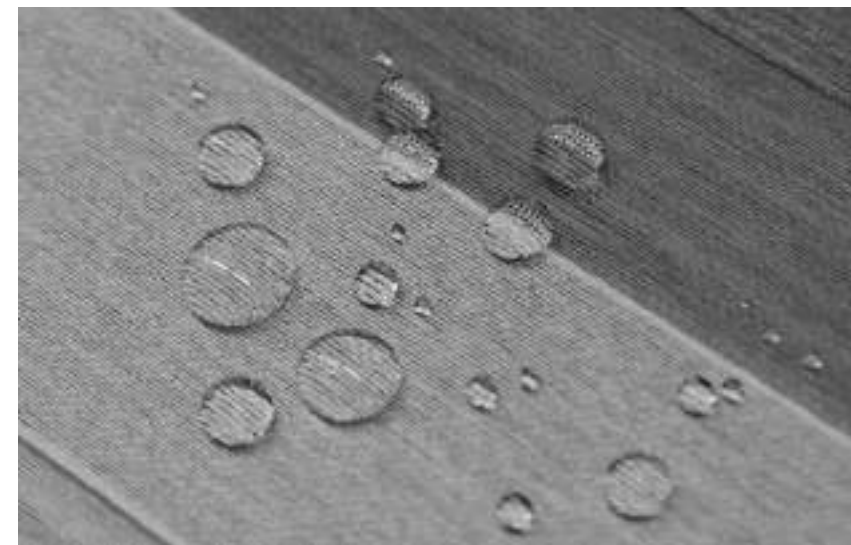
Repeat: **9.0 cm(Solid)x6.0cm(Sheer)**

Light Fastness: **≥6Grade** (ISO 105 B02)



WATERPROOF ZEBRA BLINDS





ZEBRA BLINDS



Portofino (Light Filtering)

Windows Skin



FRS2152-1
Linen



FRS2152-2
Wheat

Composition: **Polyester 100%**

Finished Width: **300cm/118"**

Weight M²: **125±5%(g/m²)**
3.7±5%(oz/yd²)

Repeat: **7.5cm(Solid)x5.0cm(Sheer)**

Light Fastness: **≥6Grade** (ISO 105 B02)

ZEBRA BLINDS



Portofino (Light Filtering)

Windows Skin



FRS2155-1
Nougat



FRS2152-2
Chestnut

Composition: **Polyester 100%**

Finished Width: **300cm/118"**

Weight M²: **125±5%(g/m²)**
3.7±5%(oz/yd²)

Repeat: **7.5cm(Solid)x5.0cm(Sheer)**

Light Fastness: **≥6Grade** (ISO 105 B02)

ZEBRA BLINDS



Chameleon(Blackout)

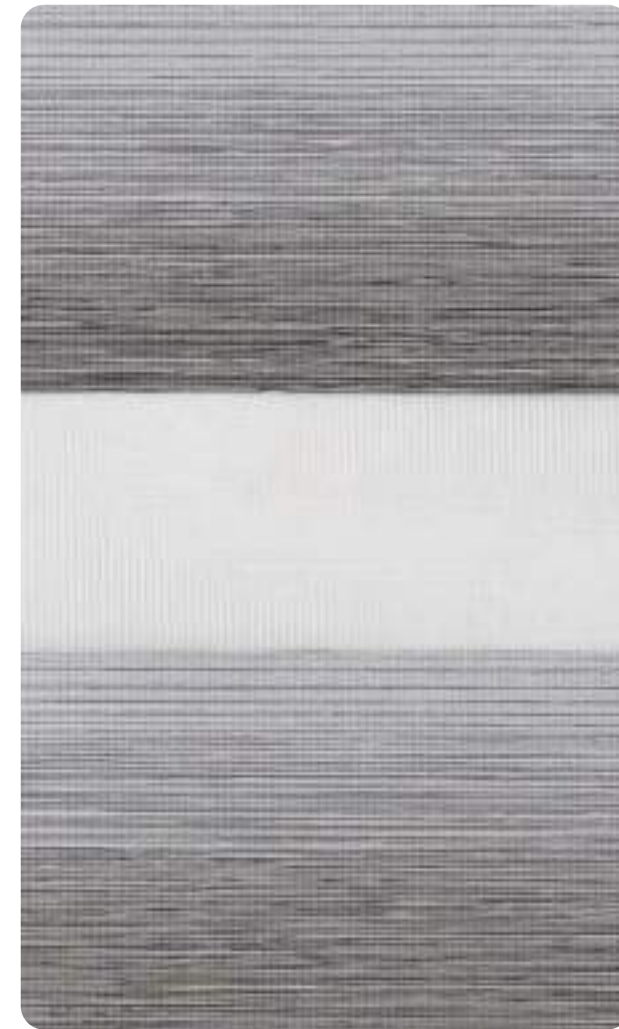
Windows Skin



FRS1021B-1
Flax



FRS1021B-3
Linen Straw



FRS1021B-4
Stella Silver

Composition:**Polyester100%**

Finished Width:**300cm/118"**

Weight M²:**160±5%(g/m²)**
4.7±5%(oz/yd²)

Repeat:**9.7cm(Solid)x7.0cm(Sheer)**

Light Fastness:**≥6Grade** (ISO 105 B02)

ZEBRA BLINDS



Valerie (Light Filtering)

Windows Skin



FRS1008-1
Wheat



FRS1008-3
Flax



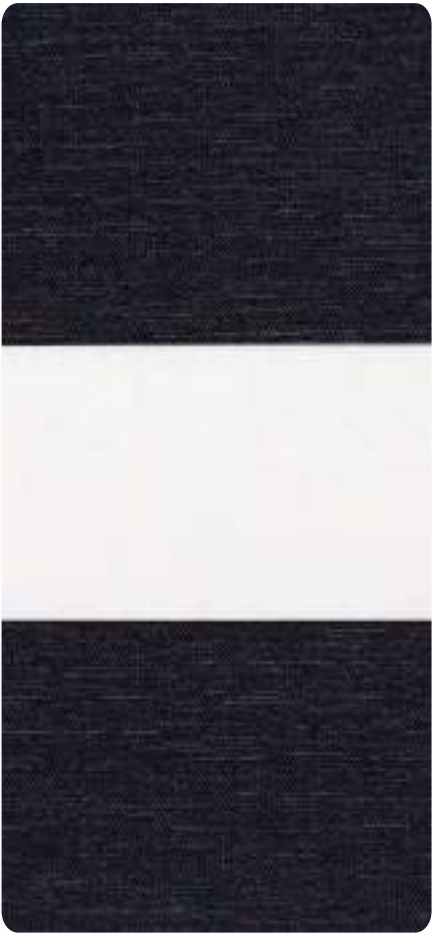
FRS1008-7
Glacier



FRS1008-8
Foggy



FRS1008-10
Silver



FRS1008-19
Anthracite

Composition: **Polyester 100%**

Finished Width: **300cm/118"**

Weight M²: **115 ± 5% (g/m²)**
3.4 ± 5% (oz/yd²)

Repeat: **7.5cm (Solid) x 5.0cm (Sheer)**

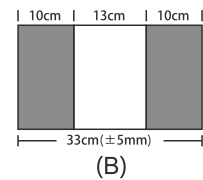
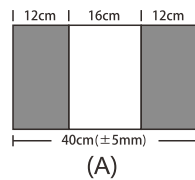
Light Fastness: **≥ 6 Grade** (ISO 105 B02)

DRAPERY SHADES

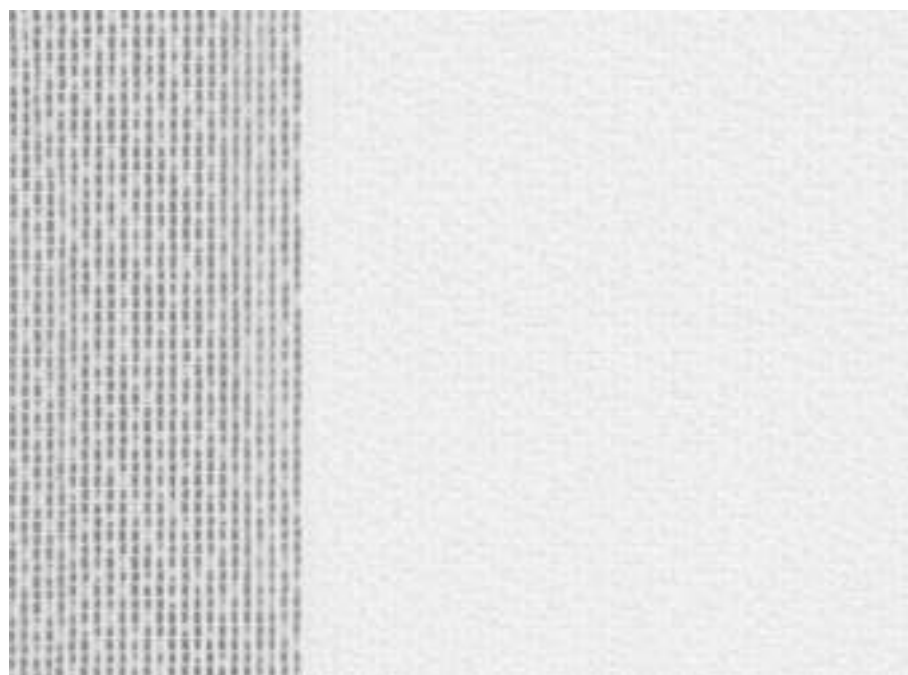




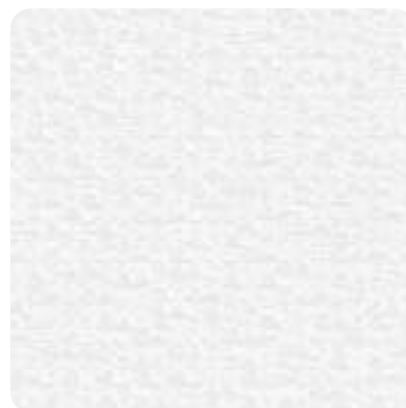
DRAPERY SHADES



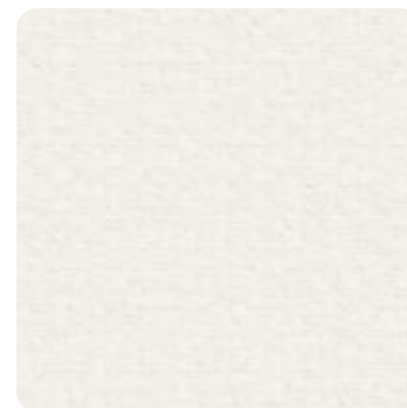
Hampton LF



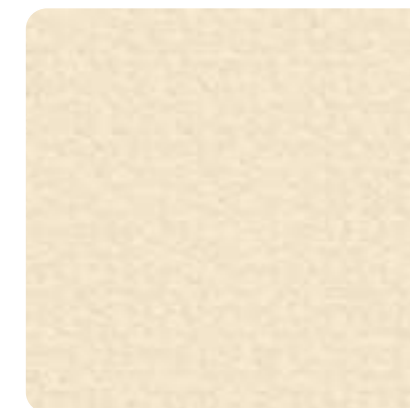
MH1001-1 (A)(B)
Swan



MH1001-2 (A)(B)
Cloud



MH1001-3 (A)(B)
Vanilla



MH1001-4 (A)
Sand



MH1001-5 (A)
Nimbus



MH1001-6 (A)(B)
Cadet Gray



MH1001-7 (A)(B)
Shadow



MH1001-8 (A)(B)
Terra



MH1001-9 (A)
Bronze



MH1001-10 (A)
Graphite

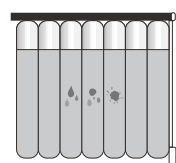
(A) Finished Width: 40cm
Weight: 76g/m±2%

(B) Finished Width: 33cm
Weight: 60g/m±2%

DREAM BLINDS

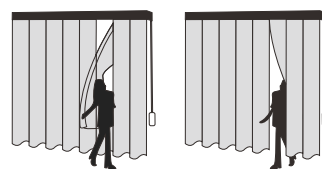


■ 3 Highlights for protections

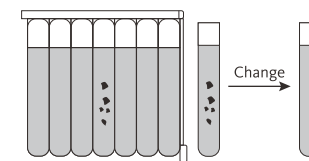


- Water proof
- Oil proof
- Stain resistant

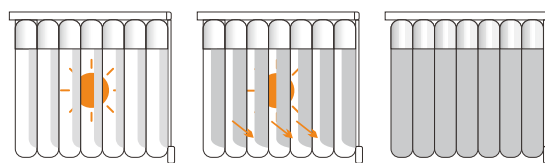
■ Can peek or go through easily



■ Change single panel quick



■ Amount of light entering is controllable

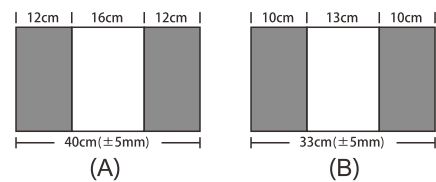


100% opening 50% opening total closing

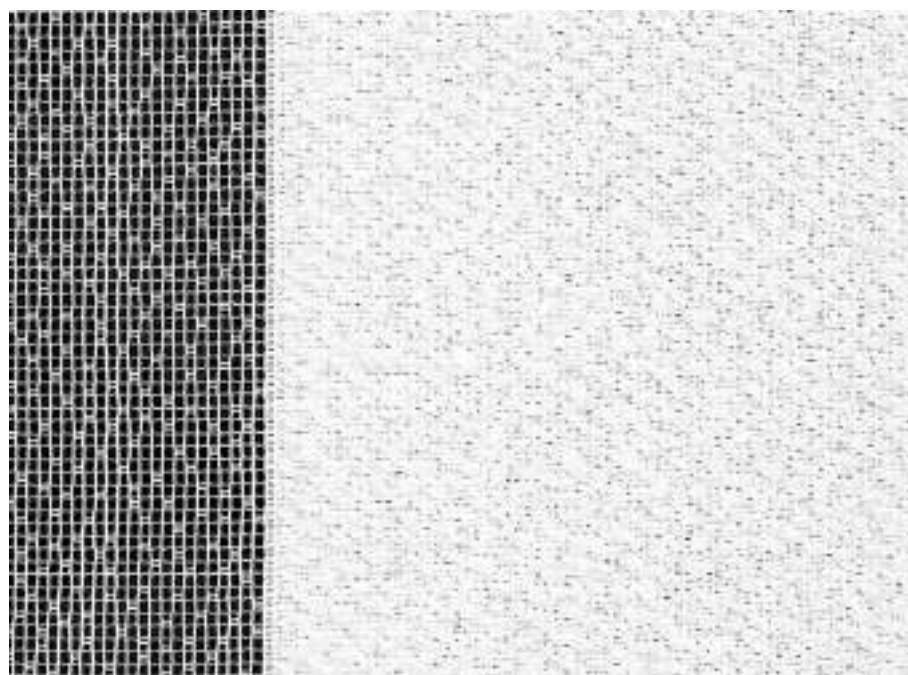
■ High quality accessories



DRAPERY SHADES



Hampton BO



MH1001BO-1 (A)(B)
Cotton



MH1001BO-1 (A)(B)
Cotton



MH1001BO-2 (A)(B)
Cream



MH1001BO-3 (A)(B)
Vanilla



MH1001BO-5 (A)(B)
Nimbus



MH1001BO-7 (A)(B)
Shadow



MH1001BO-8 (A)(B)
Terra

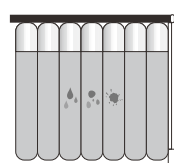
(A) Finished Width: 40cm
Weight: 115g/m±2%

(B) Finished Width: 33cm
Weight: 93g/m±2%

DREAM BLINDS

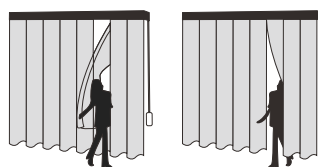


■ 3 Highlights for protections

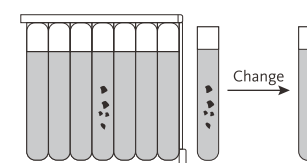


- Water proof
- Oil proof
- Stain resistant

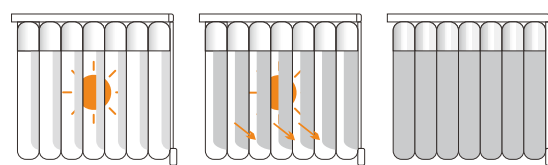
■ Can peek or go through easily



■ Change single panel quick



■ Amount of light entering is controllable



100% opening

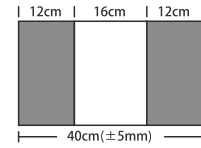
50% opening

total closing

■ High quality accessories



DRAPERY SHADES

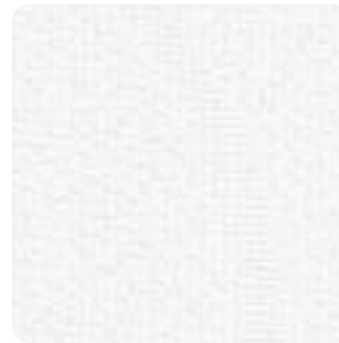


Circle

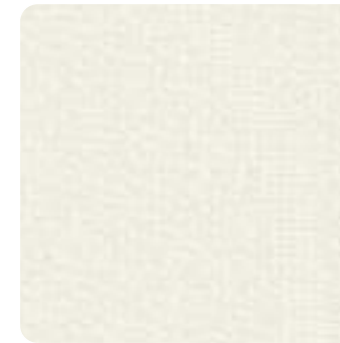


MH1007-1
Swan

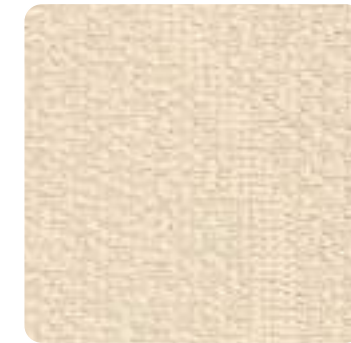
Finished Width: 40cm
Weight: 76g/m \pm 2%



MH1007-2
Cloud



MH1007-3
Vanilla



MH1007-4
Sand



MH1007-5
Nimbus



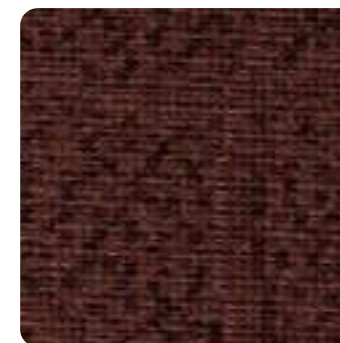
MH1007-6
Cadet Gray



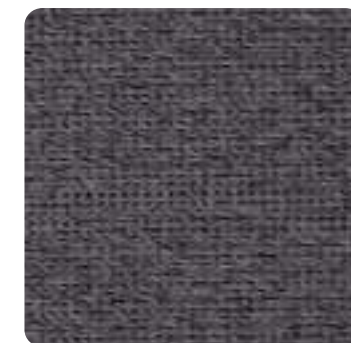
MH1007-7
Shadow



MH1007-8
Terra



MH1007-9
Bronze

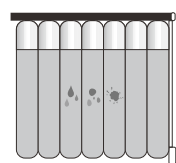


MH1007-10
Graphite

DREAM BLINDS

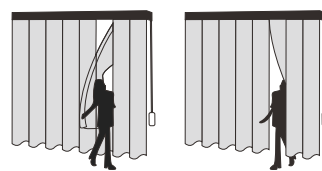


■ 3 Highlights for protections

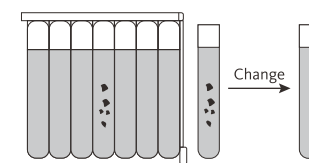


- Water proof
- Oil proof
- Stain resistant

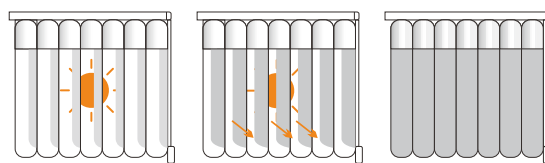
■ Can peek or go through easily



■ Change single panel quick



■ Amount of light entering is controllable

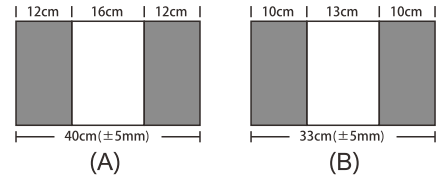


100% opening 50% opening total closing

■ High quality accessories



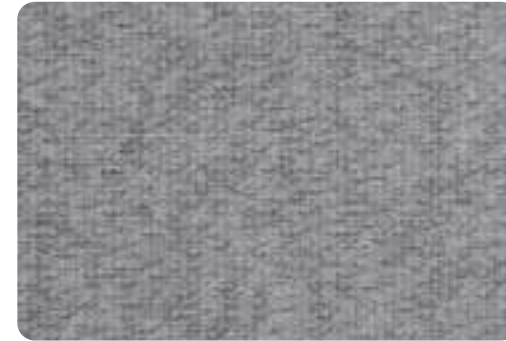
DRAPERY SHADES



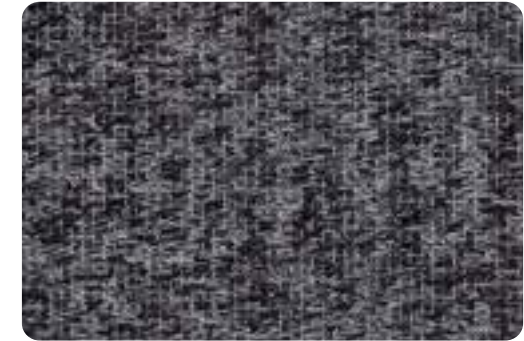
Carnival



SUM1001-1 (A)(B)
Calico



SUM1001-2 (A)(B)
French Gray



SUM1001-3 (A)(B)
Slate



SUM1001-4 (A)(B)
Indigo



SUM1001-5 (A)(B)
Raven

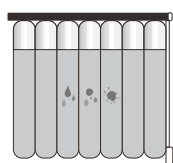
(A) Finished Width: 40cm
Weight: 107g/m±2%

(B) Finished Width: 33cm
Weight: 84g/m±2%

DREAM BLINDS

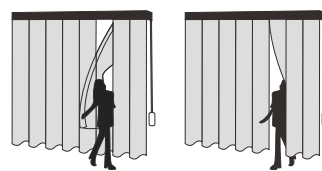


■ 3 Highlights for protections

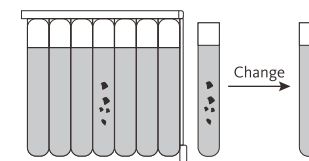


- Water proof
- Oil proof
- Stain resistant

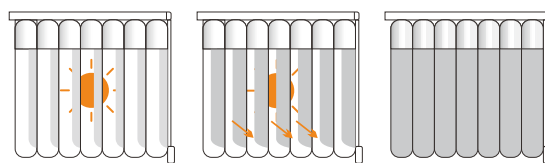
■ Can peek or go through easily



■ Change single panel quick



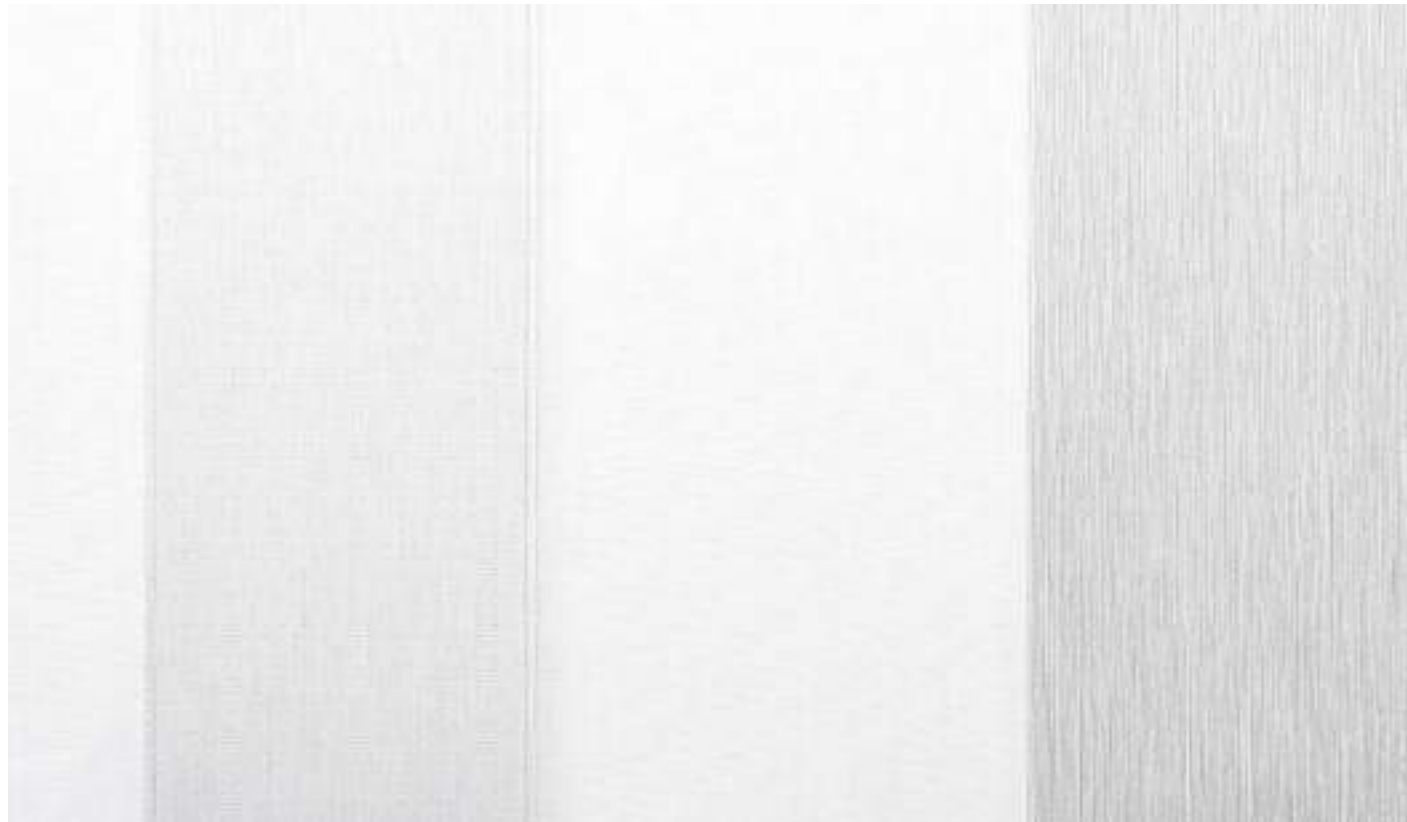
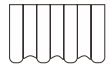
■ Amount of light entering is controllable



100% opening 50% opening total closing

■ High quality accessories





HN1003-3
Pebble

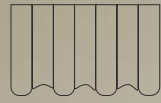


HN1003-1
Salt



HN1003-2
Linen

HANAS SHADES



FABRIC TECHNICAL PARAMETERS HN1003



Composition
100%Polyester



Finished Width
300cm



Color Fastness
Up To 5-6 Grade



Formaldehyde Content
None



Weight
135g/m²±5%



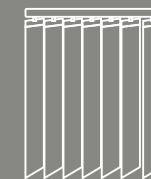
Circulation Size
10.5cm*12cm



Translucent



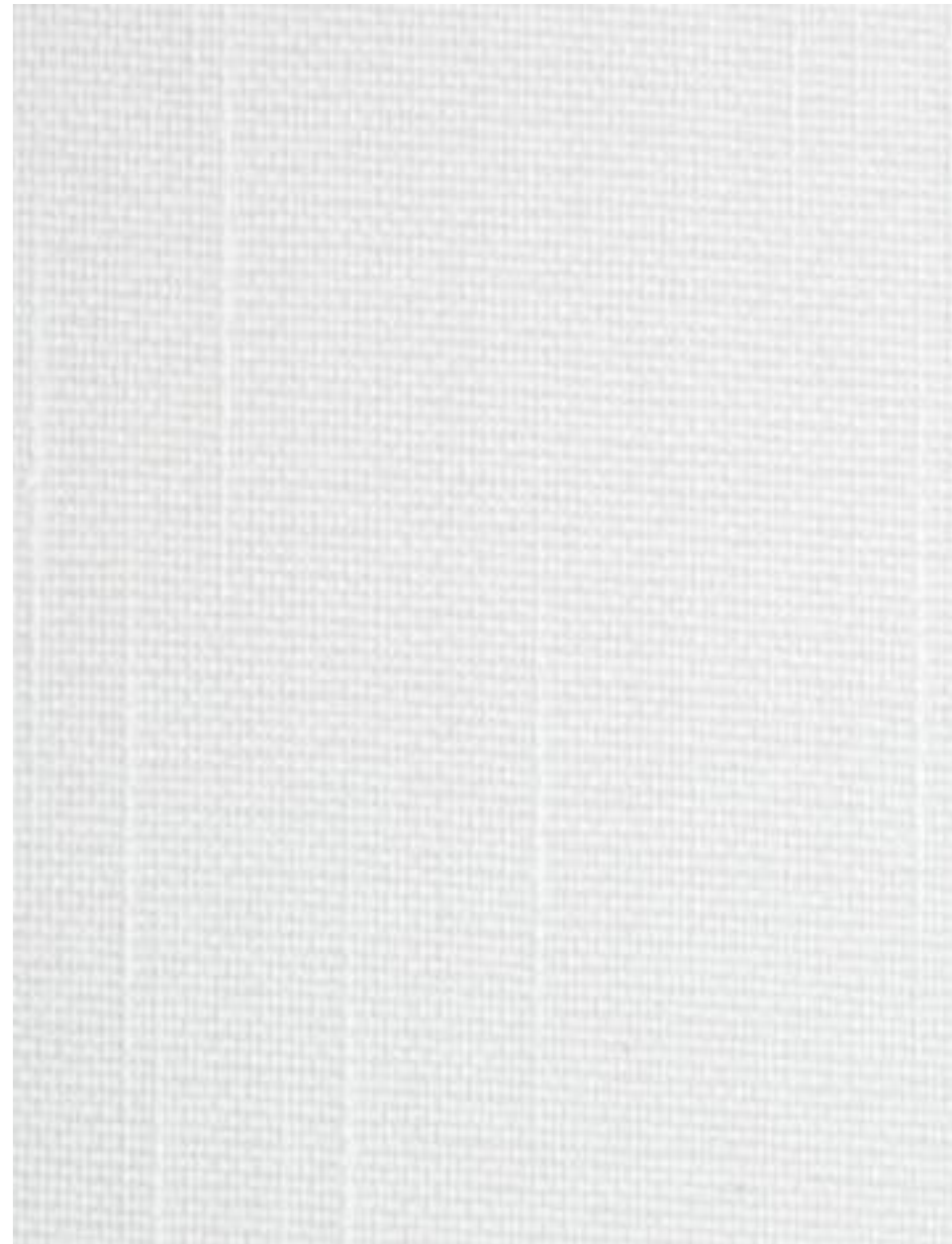
VERTICAL BLINDS





VERTICAL BLINDS

Parma



Available in 89mm/127mm



White

CL07001



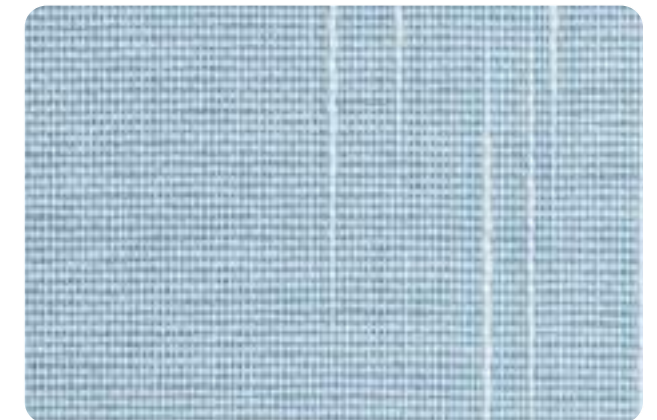
Calico

CL07002



Wheat

CL07003



Sky

CL07004



Grey

CL07007



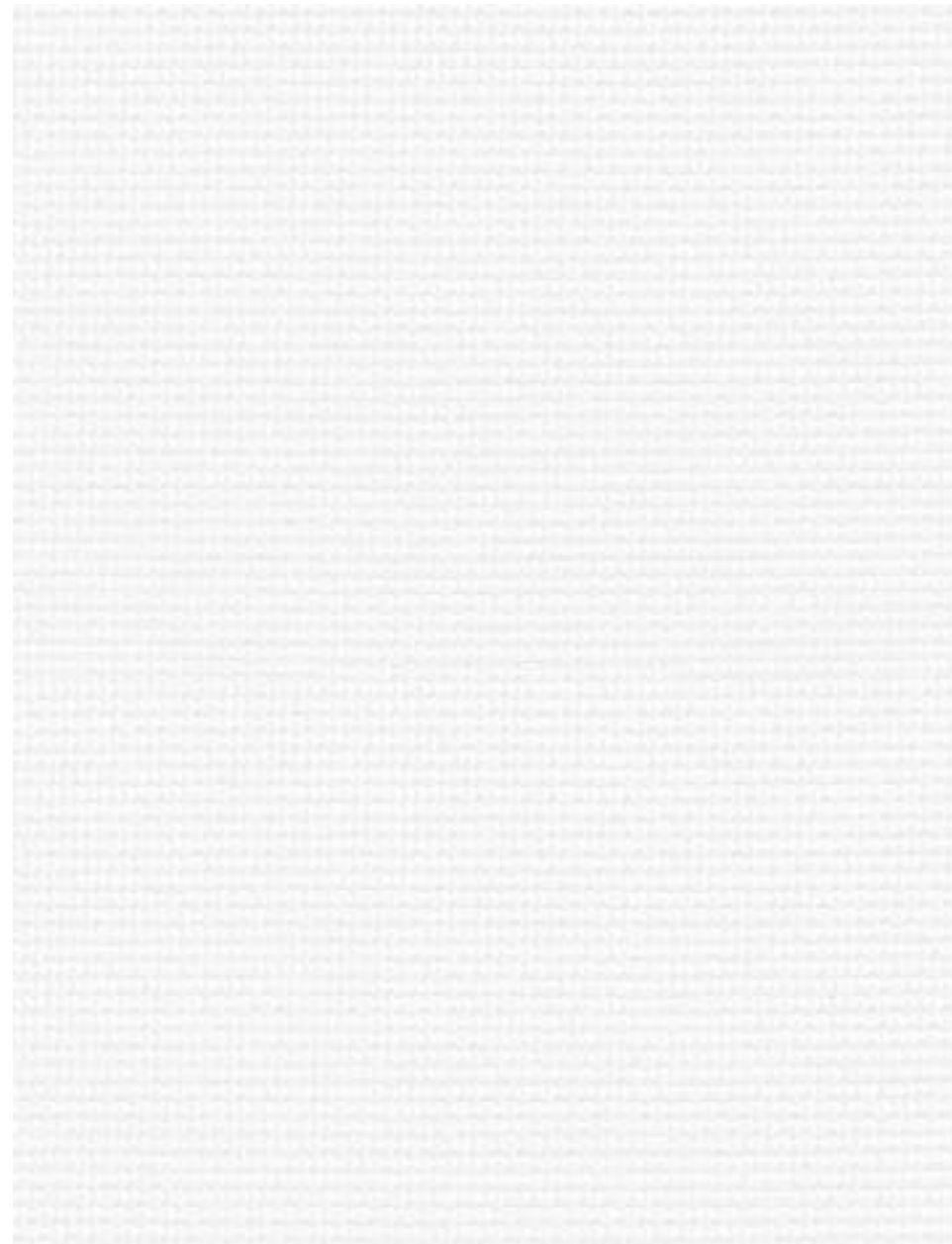
Rustico

CL07009



VERTICAL BLINDS

Medlin



Available in 89mm/127mm



Foggy White

CL88018



Sweet corn

CL8802B



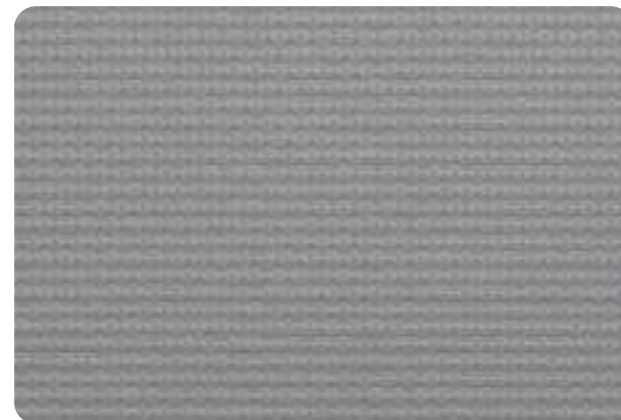
Earth

CL8804B



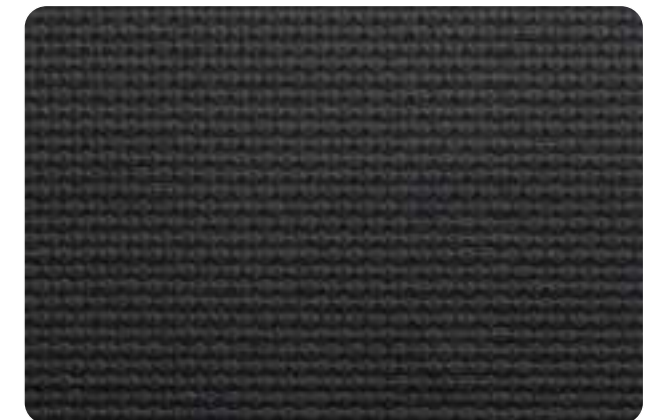
Gray Violet

CL8807B



Cement

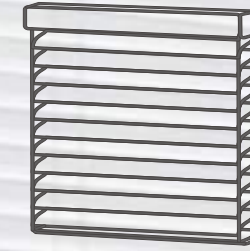
CL8811B



Charcoal

CL8813B





SHANGRI-LA SHADES





Woven Shangri-La

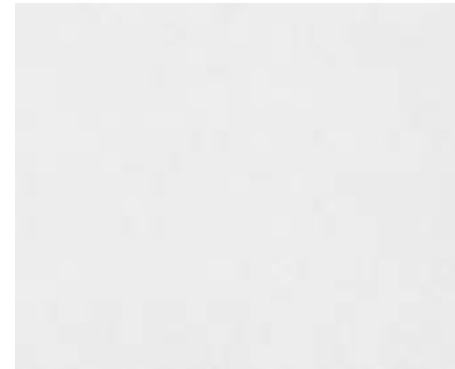
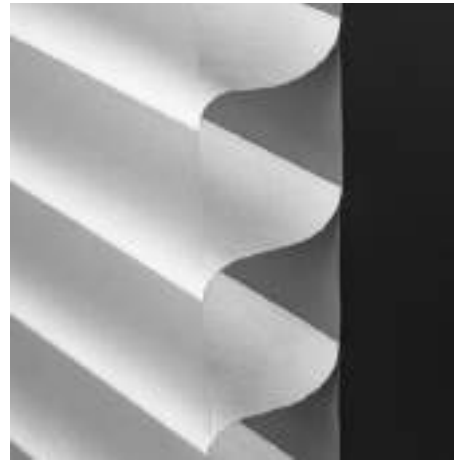




BLACKOUT SHANGRI-LA SHADES

Bloomberg

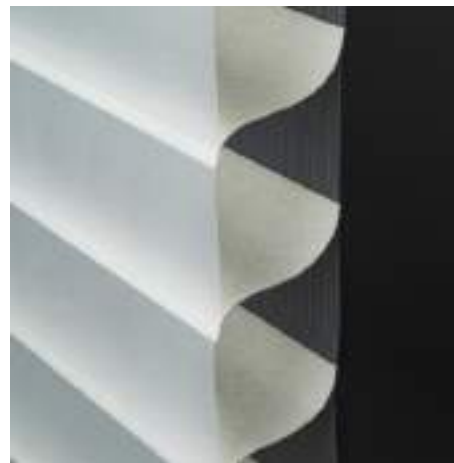
55mm



XG6012-1 Chalk



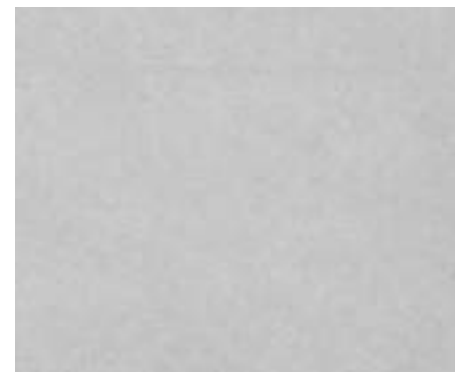
XG6012-6 Sand



XG6012-2 Creamy



XG6012-8 Chocolate



XG6012-4 Platinum

■ Composition
Polyester100%

■ Finished Width
300cm/118"

■ Weight M²
195±5%(g/m²)
5.8±5%(oz/yd²)

■ Circulation Size
55mm/75mm

■ Color Fastness
5-6 Grade

■ Formaldehyde Content
0%

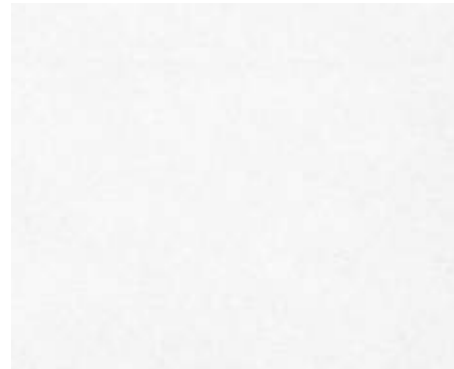
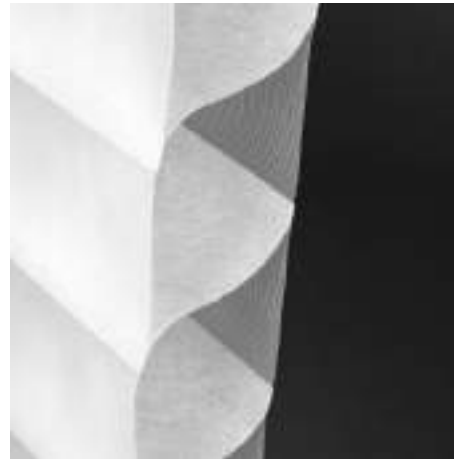
■ Environment
GREENGUARD

■ Translucent/Blackout
Blackout

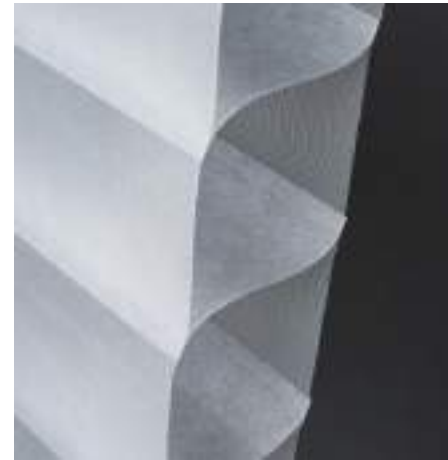
SHANGRI-LA SHADES

Atlantic

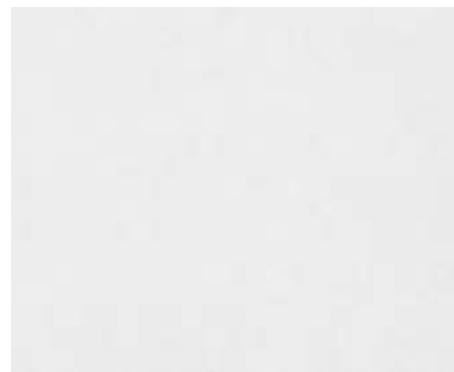
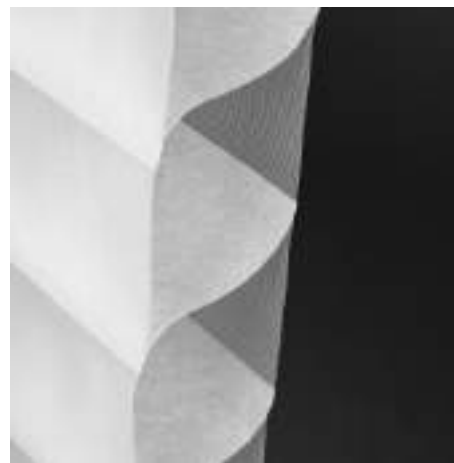
55mm



XG6013-0 Glacier White



XG6013-4 Gray Violet



XG6013-1 Chalk



XG6013-7 Desert



XG6013-2 Linen



XG6013-8 Taupe

■ Composition
Polyester100%

■ Finished Width
300cm/118"

■ Weight M²
145±5%(g/m²)
4.3±5%(oz/yd²)

■ Circulation Size
55mm/75mm

■ Color Fastness
5-6 Grade

■ Formaldehyde Content
0%

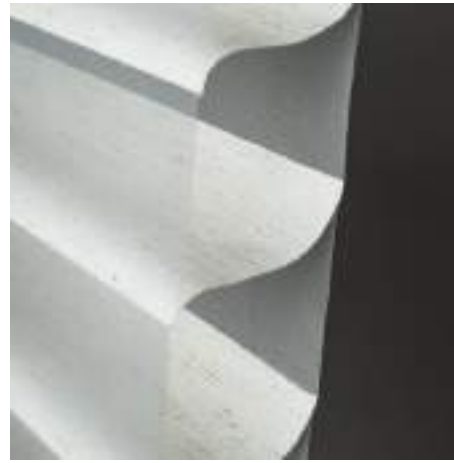
■ Environment
GREENGUARD

■ Translucent/Blackout
Translucent

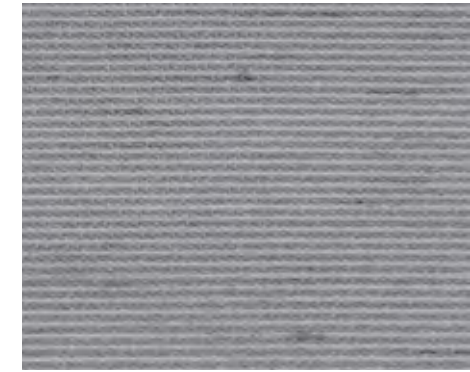
SHANGRI-LA SHADES

Breeze

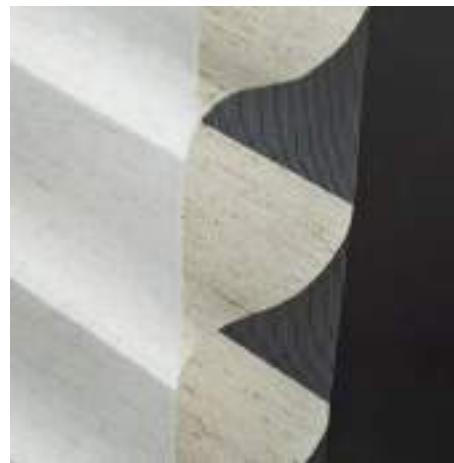
55mm



XG6017-1 Flax



XG6017-4 Khaki



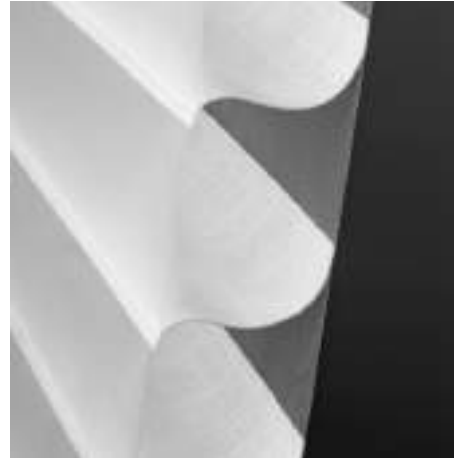
XG6017-2 Linen

- Composition
Polyester90%+
10%Linen
- Finished Width
300cm/118"
- Weight M²
260±5%(g/m²)
7.7±5%(oz/yd²)
- Circulation Size
55mm/75mm
- Color Fastness
5-6 Grade
- Formaldehyde Content
0%
- Environment
GREENGUARD
- Translucent/Blackout
Translucent

SHANGRI-LA SHADES

Portola

55mm



XG6020-1 Swan

XG6020-4 Gray Violet



XG6020-2 Vanilla

■ Composition
Polyester100%

■ Finished Width
300cm/118"

■ Weight M²
275±5%(g/m²)
8.1±5%(oz/yd²)

■ Circulation Size
55mm/75mm

■ Color Fastness
5-6 Grade

■ Formaldehyde Content
0%

■ Environment
GREENGUARD

■ Translucent/Blackout
Translucent

SHANGRI-LA SHADES

Banbury

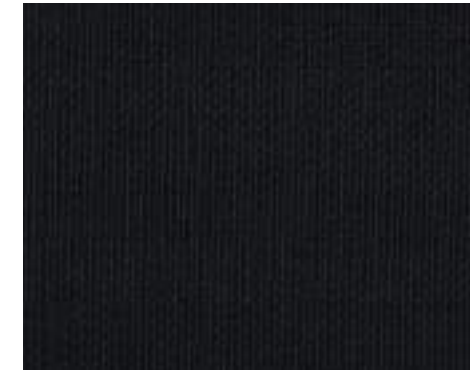
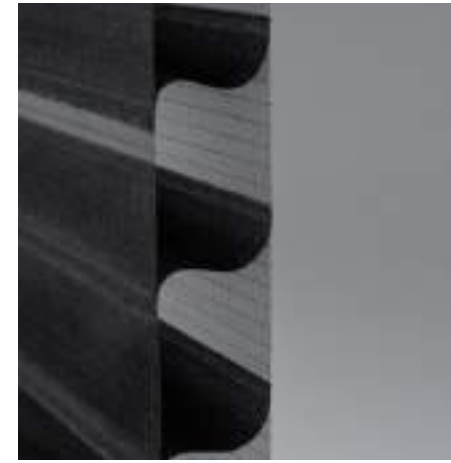
55mm



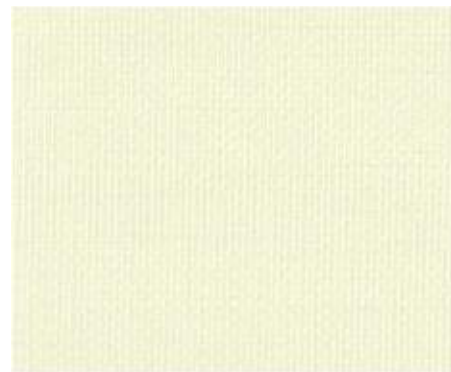
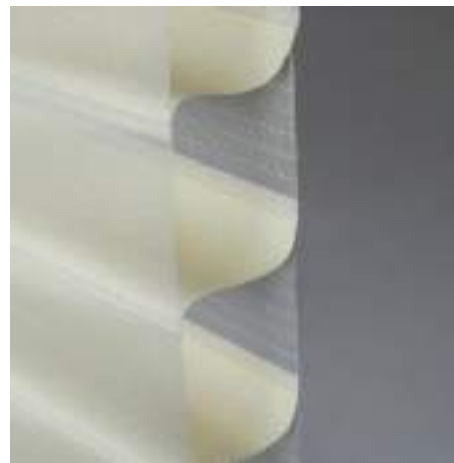
Waterproof



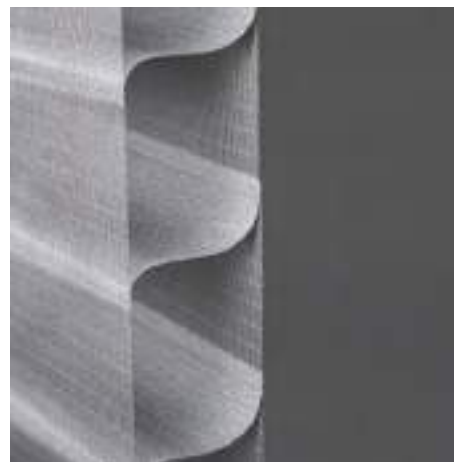
XG2002-0 Luminous



XG2002-10 Onyx



XG2002-1 Rich Cream



XG2002-5 Granite

■ Composition
Polyester100%

■ Finished Width
300cm/118"

■ Weight M²
190±5%(g/m²)
5.6±5%(oz/yd²)

■ Circulation Size
55mm/75mm

■ Color Fastness
5-6 Grade

■ Formaldehyde Content
0%

■ Environment
GREENGUARD

■ Translucent/Blackout
Translucent