



SUN SCREEN
DESIGNER SERIES



YOUR SHADE FABRIC EXPERT

Basket 5% Openness Factor



2035-3



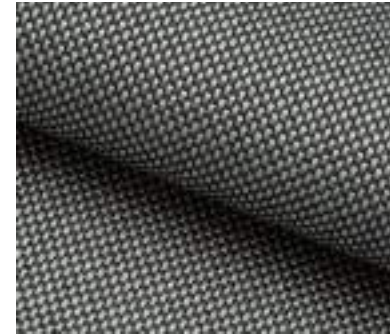
2038-2



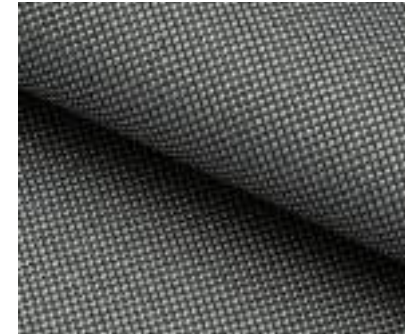
2118-2



2091-3



2117-4



2116-5



2090-1



2071-10



2073-7



S5-6



2056-1



2057-3



2049-2



2102-2

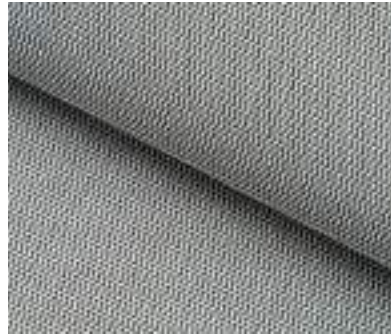


AR-S5-2

Basket 3% Openness Factor



2115-2



2072-7



2042-3



AR2072-3



2039-7

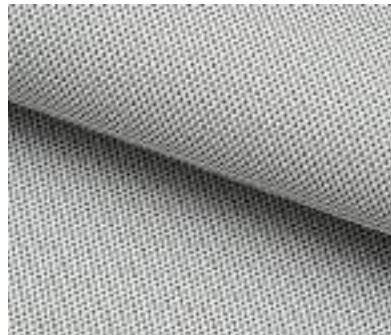


S3-9

Basket 1% Openness Factor



2098-2



S1-6



2058-2

Basket 2% Openness Factor



2036-1

Basket 8% Openness Factor



2080-3



2074-2



2074BO-3

Basket 12% Openness Factor



2075-4

Basket 7% Openness Factor

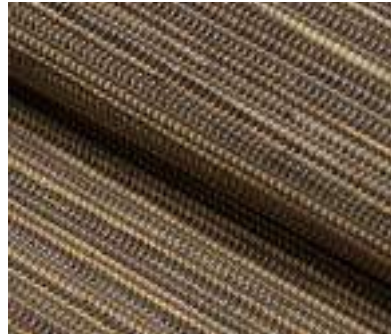
Basket 6% Openness Factor



2097-2



2103-4

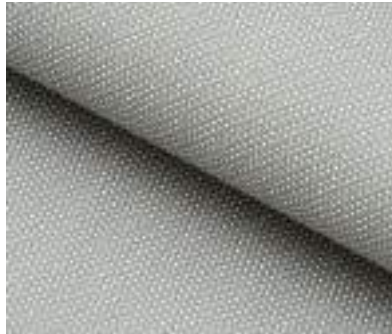


LP080-4

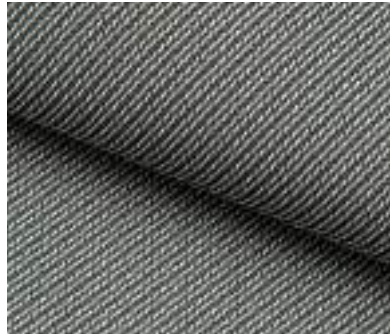
Twill 5% Openness Factor



2093-6



2119-3



2055-6



2048-7

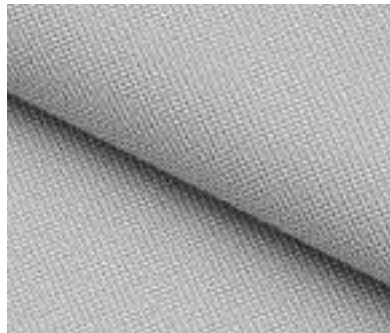
Twill 1% Openness Factor



2100-3



2094-6



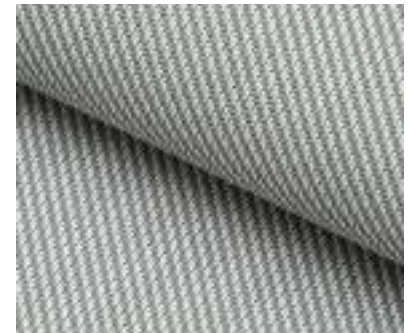
2107-4

Twill 3% Openness Factor



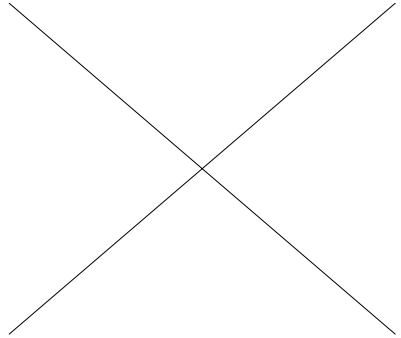
2053-6

Twill 2% Openness Factor

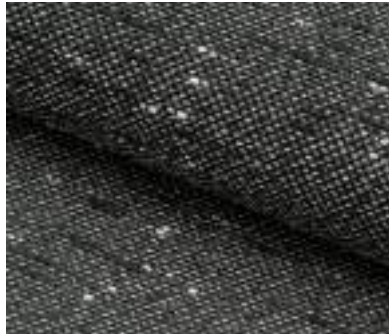


2081-4

Jacquard **5%** Openness Factor



2033



2037-9

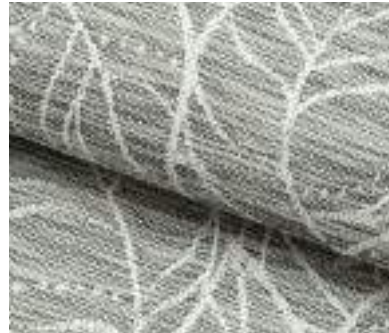
Jacquard **3%** Openness Factor



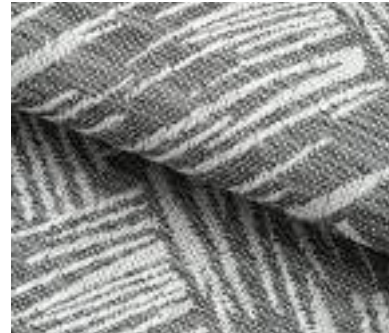
2052-4



2022-3



2020-2



2023-4

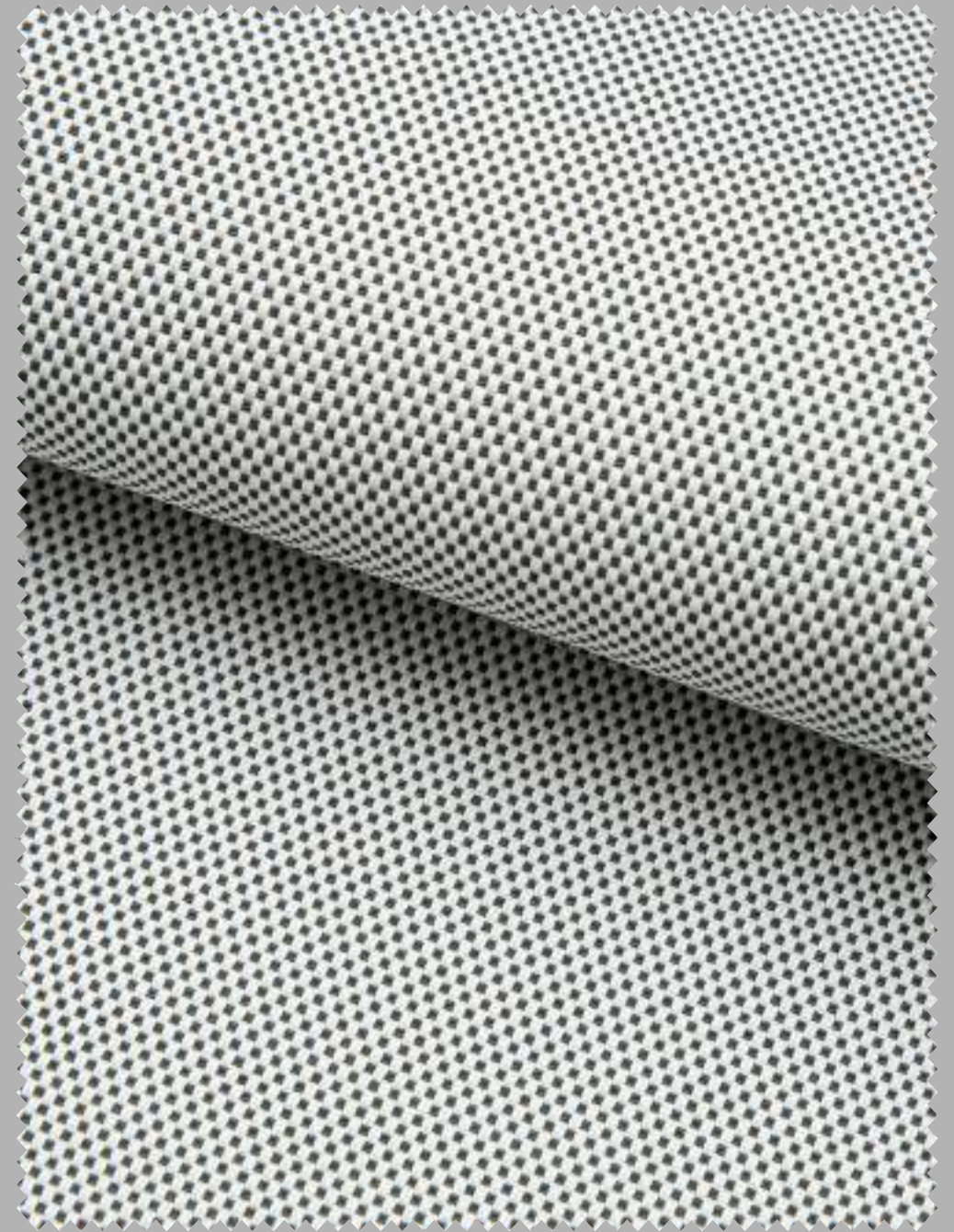


产品节能

S1

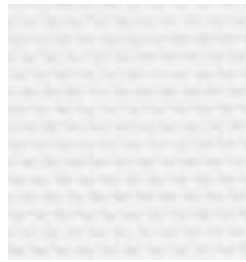
1%

Openness Factor



S1-6

Sun Screen



S1-1



S1-2



S1-(2105-2)



S1-3



S1-(2105-3)



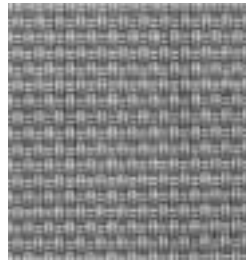
S1-4



S1-5



S1-6



S1-8



S1-9



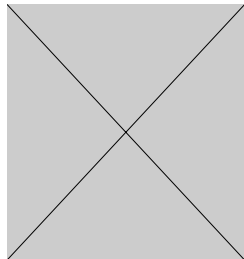
S1-7



S1-10



S1-11



S1-203

Solar Energetic Properties


Ulterio European Standard EN 14501 Calculation G-value according to EN13363-1+A1:2007	SOLAR ENERGETIC PROPERTIES					VISUAL PROPERTIES
	FABRIC			FABRIC + GLAZING		
				INTERIOR		
	G-factor = total solar energy transmittance					
Color Code	Ts	Rs	As	C:gv = 0.59	D:gv = 0.32	Tv
S1-1(2105-1)	14	75	11	0.32	0.24	10
S1-2	8	66	26	0.35	0.25	5
S1-3	12	52	36	0.39	0.26	8
S1-(2105-2)	19	77	4	0.32	0.24	14
S1-(2105-3)	8	66	26	0.35	0.25	4
S1-4	7	53	40	0.39	0.26	4
S1-5	-	-	-	-	-	-
S1-6	3	44	53	0.42	0.27	2
S1-7	-	-	-	-	-	-
S1-8	5	30	65	0.46	0.28	2
S1-9	0	9	91	0.53	0.29	0
S1-10	0	6	94	0.54	0.30	0
S1-11	0	5	95	0.54	0.30	0
S1-203	-	-	-	-	-	-

Technical Parameter


COMPOSITION: POLYESTER 35%+PVC 65%
 WIDTH: 160/200/250/300CM
 WEIGHT: 480g/m²±5%
 OPENNESS FACTOR: AVERAGE 1%
 YARN COUNT WARP: 0.34mm
 YARN COUNT WEFT: 0.34mm
 FABRIC COUNT WARP: 64/inch
 FABRIC COUNT WEFT: 42/inch
 THICKNESS: 0.65mm
 TENSILE STRENGTH WARP: 380lb
 TENSILE STRENGTH WEFT: 380lb
 ABRASION RESISTANCE: > 10000(ASTM D 4966)
 COLOR FASTNESS TO LIGHT: Class 5.0
 FLAMMABILITY: Class 1
 ROLL LENGTH: 30 M

NFPA 701 (USA)
BS 5867-2 (U.K)


Alternative for




Anti Bacteria




UV resistance




Lead Free




Energy Saving



5 YEAR WARRANTY



NFPA 701(USA)
BS 5867-2(U.K)



RoHS
COMPLIANT



2039

1%

Openness Factor

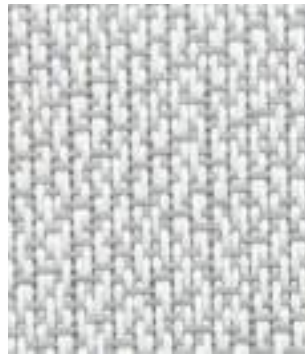


2039-7

Sun Screen



2039-1



2039-3



2039-6



2039-2



2039-4



2039-5



2039-7



2039-8



2039-9

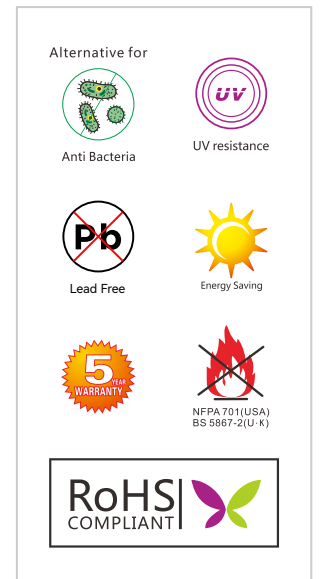
Solar Energetic Properties

Ulterio European Standard EN 14501 Calculation G-value according to EN13363-1+A1:2007	SOLAR ENERGETIC PROPERTIES					VISUAL PROPERTIES
	FABRIC			FABRIC + GLAZING		
				INTERIOR		
	G-factor = total solar energy transmittance					
Color Code	Ts	Rs	As	C:gv = 0.59	D:gv = 0.32	Tv
2039-1	-	-	-	-	-	-
2039-2	20	60	20	0.37	0.26	18
2039-3	16	50	34	0.40	0.26	13
2039-4	17	53	30	0.39	0.26	13
2039-5	13	49	38	0.40	0.26	10
2039-6	10	32	58	0.46	0.28	9
2039-7	9	15	76	0.51	0.29	8
2039-8	9	8	83	0.53	0.30	8
2039-9	-	-	-	-	-	-

Technical Parameter

COMPOSITION:	POLYESTER 30%+PVC 70%
WIDTH:	250/300CM
WEIGHT:	380g/m ² ±5%
OPENNESS FACTOR:	AVERAGE 1%
YARN COUNT WARP:	0.34mm
YARN COUNT WEFT:	0.34mm
FABRIC COUNT WARP:	48/inch
FABRIC COUNT WEFT:	40/inch
THICKNESS:	0.60mm
TENSILE STRENGTH WARP:	410lb
TENSILE STRENGTH WEFT:	410lb
ABRASION RESISTANCE:	> 10000(ASTM D 4966)
COLOR FASTNESS TO LIGHT:	Class 5.0
FLAMMABILITY:	Class 1
ROLL LENGTH:	30 M

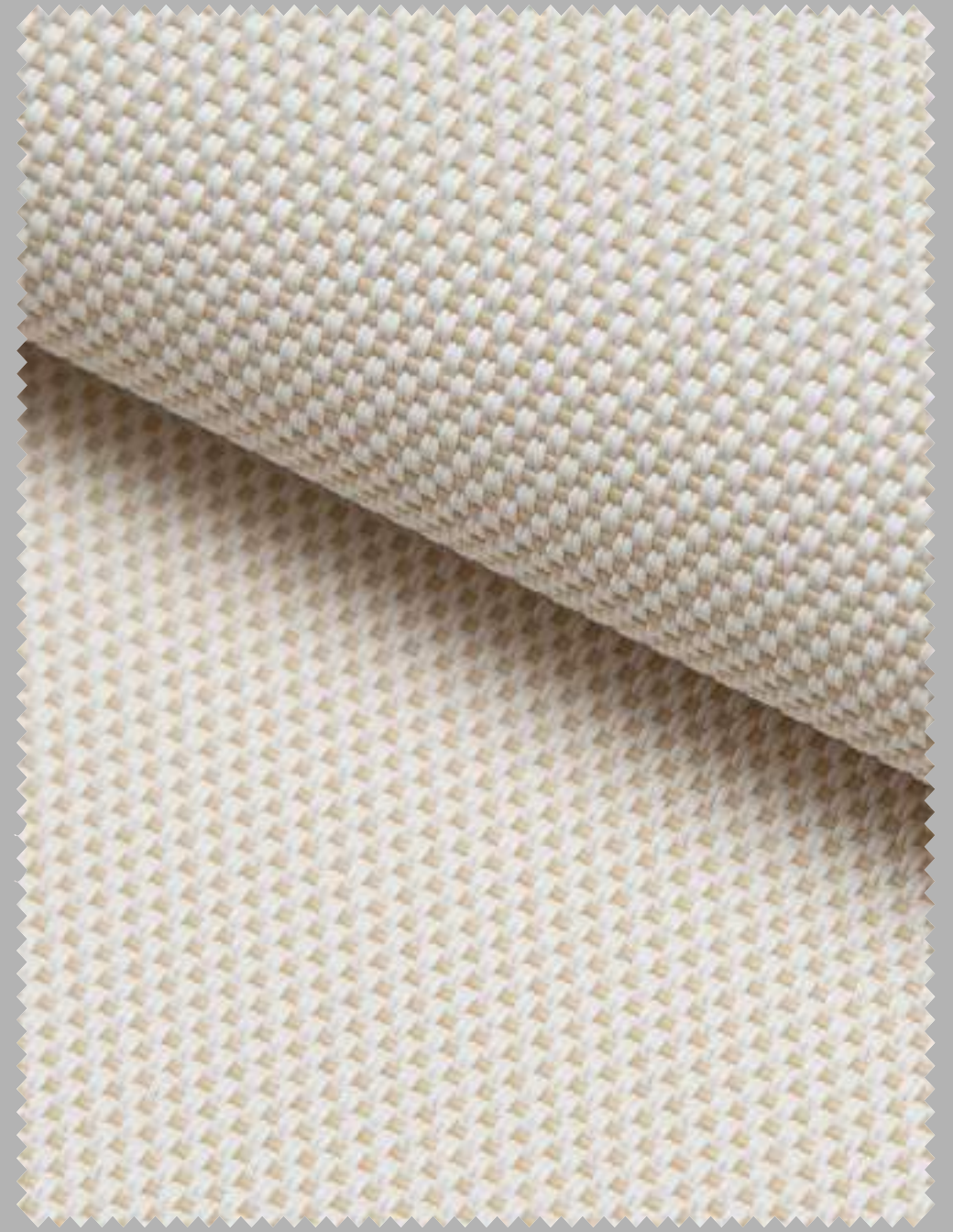
NFPA 701 (USA)
BS 5867-2 (U·K)





2058

1%
Openness Factor



2058-2

Sun Screen



2058-1



2058-3



2058-2

Solar Energetic Properties

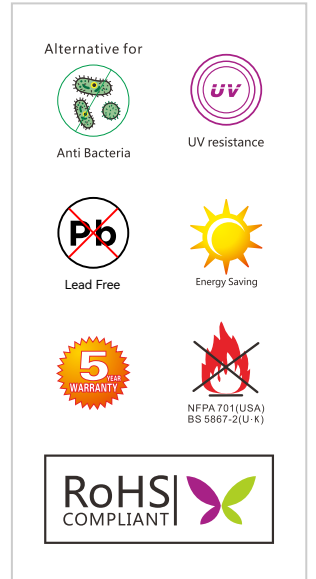
Ulterio European Standard EN 14501 Calculation G-value according to EN13363-1+A1:2007	SOLAR ENERGETIC PROPERTIES					VISUAL PROPERTIES
	FABRIC			FABRIC + GLAZING		
				INTERIOR		
	G-factor = total solar energy transmittance					
Color Code	Ts	Rs	As	C:gv = 0.59	D:gv = 0.32	Tv
2058-1	14	75	11	0.32	0.24	10
2058-2	-	-	-	-	-	-
2058-3	5	56	39	0.38	0.26	4

Technical Parameter

COMPOSITION:	POLYESTER 30%+PVC 70%
WIDTH:	200/250/300CM
WEIGHT:	490g/m ² ±5%
OPENNESS FACTOR:	AVERAGE 1%
YARN COUNT WARP:	0.34mm
YARN COUNT WEFT:	0.44mm
FABRIC COUNT WARP:	24.5/inch
FABRIC COUNT WEFT:	9/inch
THICKNESS:	0.60mm
TENSILE STRENGTH WARP:	380lb
TENSILE STRENGTH WEFT:	380lb
ABRASION RESISTANCE:	> 10000(ASTM D 4966)
COLOR FASTNESS TO LIGHT:	Class 5.0
FLAMMABILITY:	Class 1
ROLL LENGTH:	30 M

NFPA 701 (USA)

B S 5867-2 (U·K)





2094

1%
Openness Factor



2094-6

Sun Screen



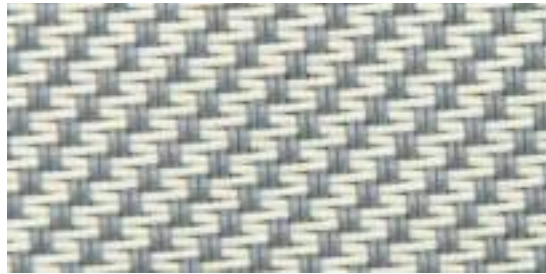
2094-2



2094-7



2094-1



2094-5



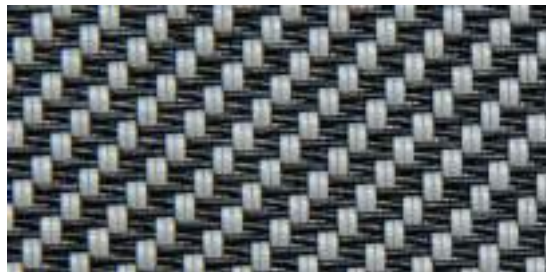
2094-3



2094-4



2094-6



2094-8

Solar Energetic Properties

Ulterio European Standard EN 14501 Calculation G-value according to EN13363-1+A1:2007	SOLAR ENERGETIC PROPERTIES					VISUAL PROPERTIES
	FABRIC			FABRIC + GLAZING		
				INTERIOR		
	G-factor = total solar energy transmittance					
Color Code	Ts	Rs	As	C:gv = 0.59	D:gv = 0.32	Tv
2094-1	10	70	20	0.34	0.25	6
2094-2	12	56	32	0.38	0.26	8
2094-3	3	56	41	0.38	0.25	1
2094-4	1	20	79	0.49	0.29	0
2094-5	2	38	60	0.43	0.27	1
2094-6	5	45	50	0.42	0.26	2
2094-7	1	24	75	0.48	0.28	1
2094-8	0	18	82	0.50	0.29	0

Technical Parameter

COMPOSITION:

WIDTH:

WEIGHT:

OPENNESS FACTOR:

YARN COUNT WARP:

YARN COUNT WEFT:

FABRIC COUNT WARP:

FABRIC COUNT WEFT:

THICKNESS:

TENSILE STRENGTH WARP:

TENSILE STRENGTH WEFT:

ABRASION RESISTANCE:

COLOR FASTNESS TO LIGHT:

FLAMMABILITY:

ROLL LENGTH:

POLYESTER 30%+PVC 70%

200/250/300CM

650g/m²±5%

AVERAGE 1%

0.44mm

0.44mm

48/inch

40/inch

0.90mm

410lb

410lb

> 10000(ASTM D 4966)

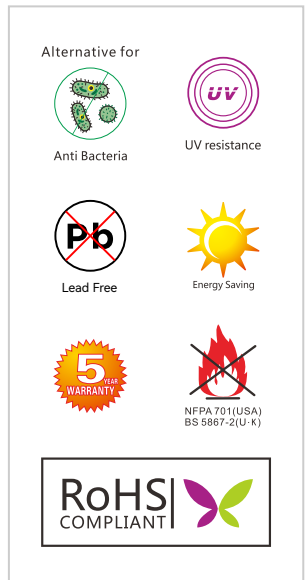
Class 5.0

Class 1

30 M

NFPA 701 (USA)

BS 5867-2 (U·K)





2098

1%

Openness Factor

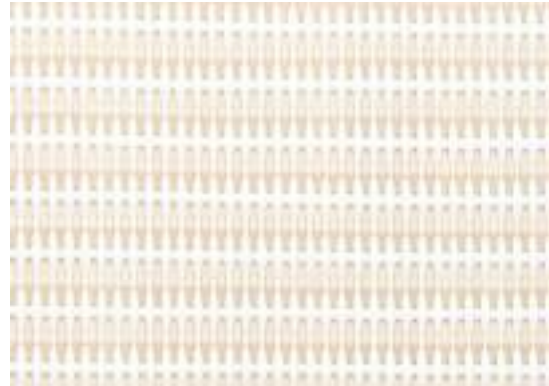


2098-2

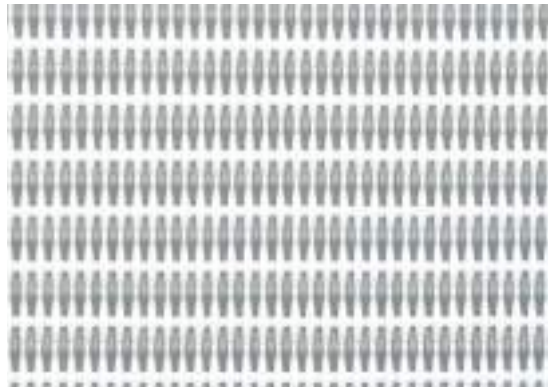
Sun Screen



2098-1



2098-2



2098-3


Solar Energetic Properties

Ulterio European Standard EN 14501 Calculation G-value according to EN13363-1+A1:2007	SOLAR ENERGETIC PROPERTIES					VISUAL PROPERTIES
	FABRIC			FABRIC + GLAZING		
				INTERIOR		
	G-factor = total solar energy transmittance					
Color Code	Ts	Rs	As	C:gv = 0.59	D:gv = 0.32	Tv
2098-1	11	73	16	0.33	0.24	8
2098-2	7	63	30	0.36	0.25	4
2098-3	2	51	47	0.39	0.26	1


Technical Parameter

COMPOSITION:	POLYESTER 35%+PVC 65%
WIDTH:	160/200/250/300CM
WEIGHT:	700g/m ² ±5%
OPENNESS FACTOR:	AVERAGE 1%
YARN COUNT WARP:	0.53mm
YARN COUNT WEFT:	0.53mm
FABRIC COUNT WARP:	50/inch
FABRIC COUNT WEFT:	14/inch
THICKNESS:	1.03mm
TENSILE STRENGTH WARP:	380lb
TENSILE STRENGTH WEFT:	380lb
ABRASION RESISTANCE:	> 10000(ASTM D 4966)
COLOR FASTNESS TO LIGHT:	Class 5.0
FLAMMABILITY:	Class 1
ROLL LENGTH:	30 M


Alternative for




Anti Bacteria




UV resistance




Lead Free



Energy Saving



5 YEAR WARRANTY



RoHS COMPLIANT



2100

1%

Openness Factor



2100-3

Sun Screen



2100-1



2100-2



2100-3



2100-4



2100-5

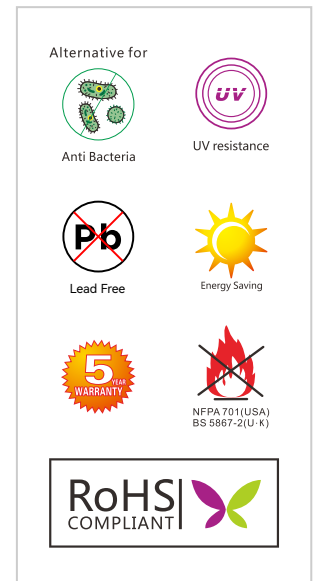
Solar Energetic Properties

Ulterio European Standard EN 14501 Calculation G-value according to EN13363-1+A1:2007	SOLAR ENERGETIC PROPERTIES					VISUAL PROPERTIES
	FABRIC			FABRIC + GLAZING		
				INTERIOR		
	G-factor = total solar energy transmittance					
Color Code	Ts	Rs	As	C:gv = 0.59	D:gv = 0.32	Tv
2100-1	14	74	12	0.33	0.24	11
2100-2	8	70	22	0.34	0.24	5
2100-3	-	-	-	-	-	-
2100-4	7	67	26	0.35	0.25	4
2100-5	4	60	36	0.37	0.25	3
2100-6	-	-	-	-	-	-

Technical Parameter

COMPOSITION:	POLYESTER 35%+PVC 65%
WIDTH:	160/200/250/300CM
WEIGHT:	520g/m ² ±5%
OPENNESS FACTOR:	AVERAGE 1%
YARN COUNT WARP:	0.37mm
YARN COUNT WEFT:	0.37mm
FABRIC COUNT WARP:	31/inch
FABRIC COUNT WEFT:	33/inch
THICKNESS:	0.74mm
TENSILE STRENGTH WARP:	380lb
TENSILE STRENGTH WEFT:	380lb
ABRASION RESISTANCE:	> 10000(ASTM D 4966)
COLOR FASTNESS TO LIGHT:	Class 5.0
FLAMMABILITY:	Class 1
ROLL LENGTH:	30 M

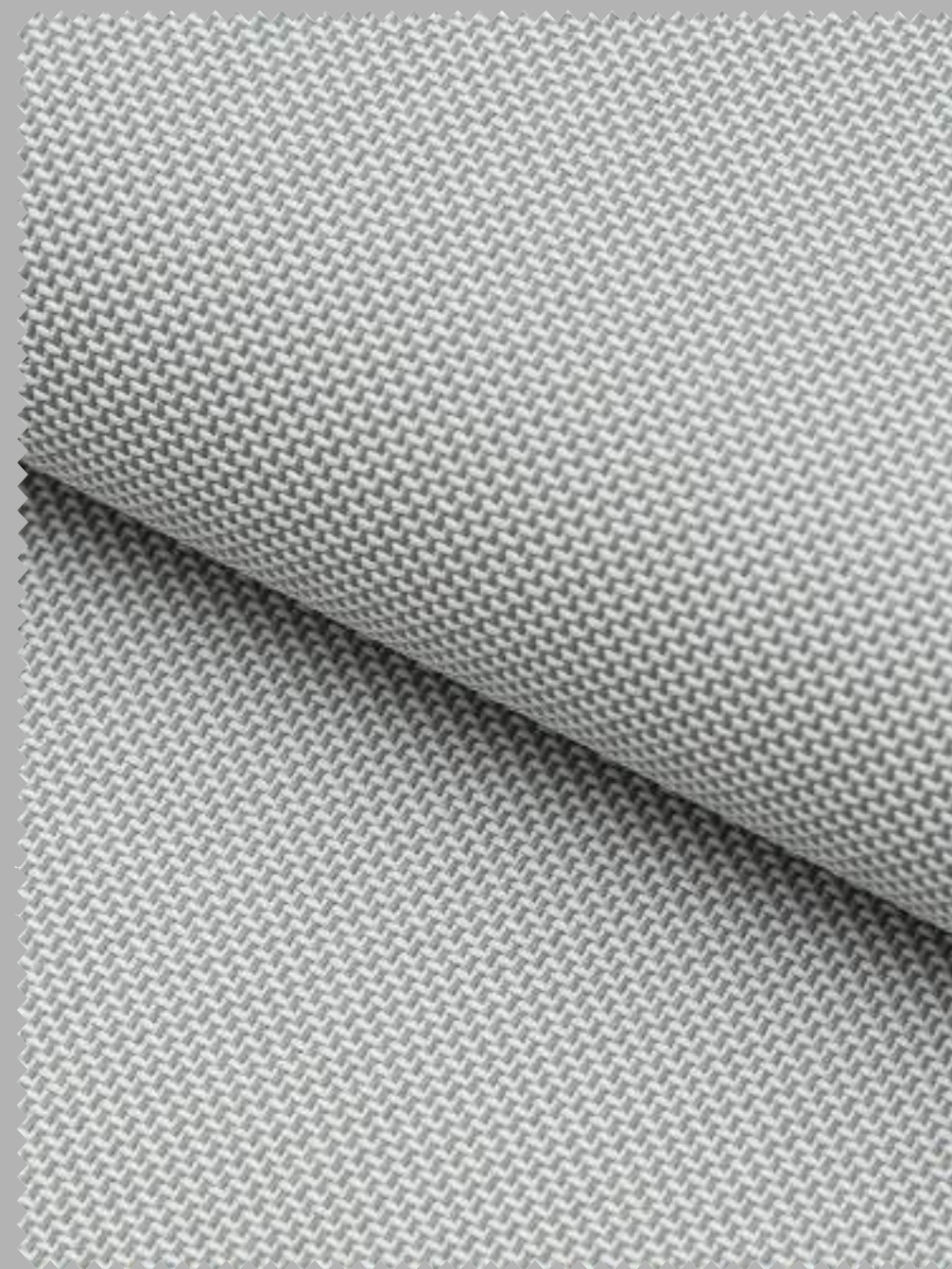
NFPA 701 (USA)
BS 5867-2 (U·K)





2107

1%
Openness Factor



2107-4



2107-1



2107-4



2107-3



2107-5



2107-2



2107-6

Solar Energetic Properties


Ulterio European Standard EN 14501 Calculation G-value according to EN13363-1+A1:2007	SOLAR ENERGETIC PROPERTIES					VISUAL PROPERTIES
	FABRIC			FABRIC + GLAZING		
				INTERIOR		
	G-factor = total solar energy transmittance					
Color Code	Ts	Rs	As	C:gv = 0.59	D:gv = 0.32	Tv
2107-1	-	-	-	-	-	-
2107-2	14	71	15	0.34	0.24	9
2107-3	9	72	19	0.33	0.24	7
2107-4	7	66	27	0.35	0.25	5
2107-5	5	60	35	0.37	0.25	4
2107-6	3	35	62	0.44	0.27	1

Technical Parameter


COMPOSITION:	POLYESTER 35%+PVC 65%
WIDTH:	160/200/250/300CM
WEIGHT:	520g/m ² ±5%
OPENNESS FACTOR:	AVERAGE 1%
YARN COUNT WARP:	0.34mm
YARN COUNT WEFT:	0.34mm
FABRIC COUNT WARP:	82/inch
FABRIC COUNT WEFT:	32/inch
THICKNESS:	0.71mm
TENSILE STRENGTH WARP:	380lb
TENSILE STRENGTH WEFT:	380lb
ABRASION RESISTANCE:	> 10000(ASTM D 4966)
COLOR FASTNESS TO LIGHT:	Class 5.0
FLAMMABILITY:	Class 1
ROLL LENGTH:	30 M

NFPA 701 (USA)
BS 5867-2 (U·K)


Alternative for




Anti Bacteria




UV resistance




Lead Free




Energy Saving



5 YEAR WARRANTY



NFPA 701 (USA)
BS 5867-2 (U·K)



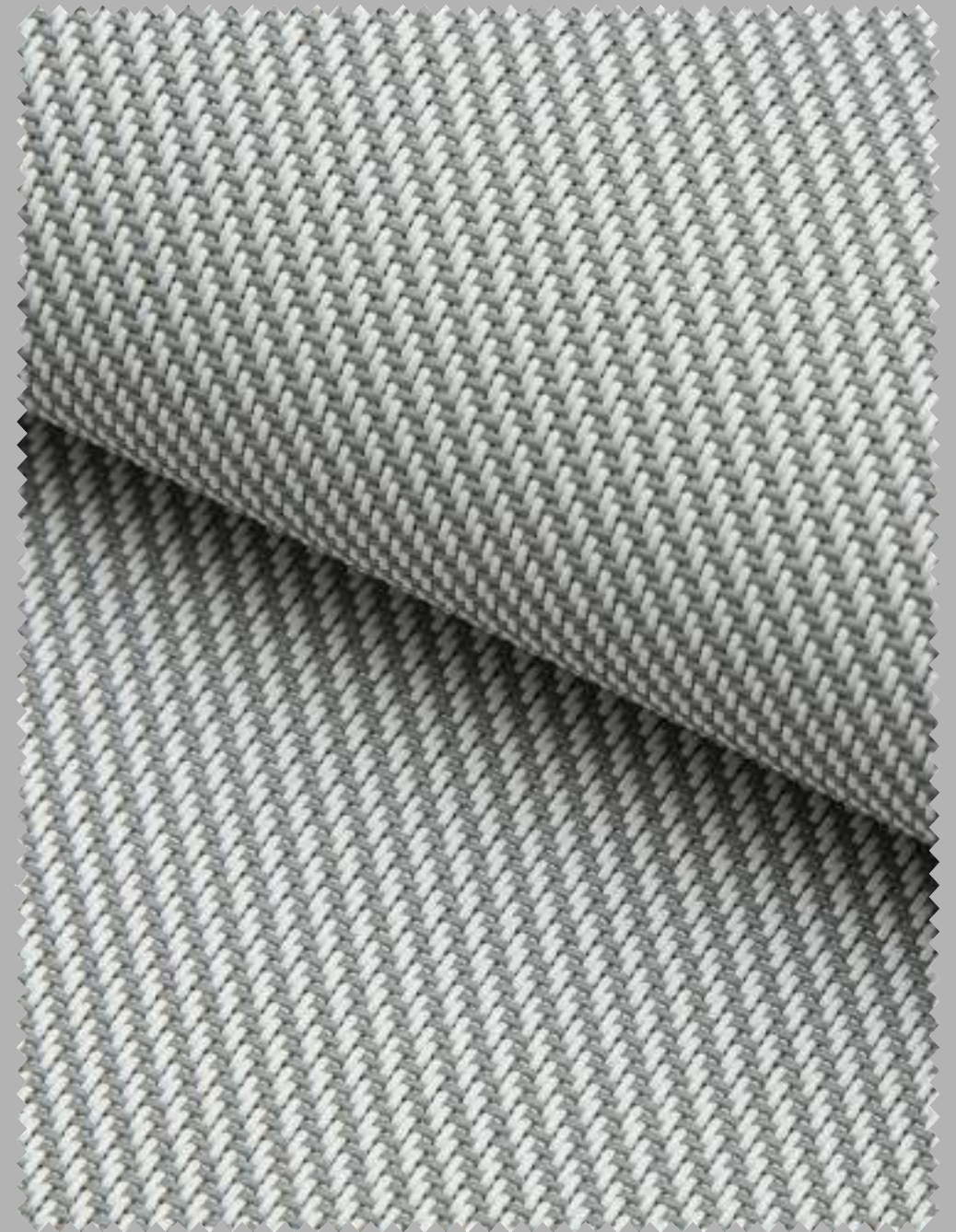
RoHS
COMPLIANT



2081

2%

Openness Factor



2081-4

Sun Screen



2081-1



2081-2



2081-3



2081-4

Solar Energetic Properties


Ulterio European Standard EN 14501 Calculation G-value according to EN13363-1+A1:2007	SOLAR ENERGETIC PROPERTIES					VISUAL PROPERTIES
	FABRIC			FABRIC + GLAZING		
				INTERIOR		
	G-factor = total solar energy transmittance					
Color Code	Ts	Rs	As	C:gv = 0.59	D:gv = 0.32	Tv
2081-1	12	71	17	0.34	0.24	10
2081-2	21	64	15	0.36	0.25	18
2081-3	13	60	27	0.37	0.25	10
2081-4	7	43	50	0.42	0.27	6

Technical Parameter


COMPOSITION: POLYESTER 30%+PVC 70%
 WIDTH: 160/200/250/300CM
 WEIGHT: 530g/m²±5%
 OPENNESS FACTOR: AVERAGE 2%
 YARN COUNT WARP: 0.44mm
 YARN COUNT WEFT: 0.44mm
 FABRIC COUNT WARP: 34/inch
 FABRIC COUNT WEFT: 24/inch
 THICKNESS: 0.72mm
 TENSILE STRENGTH WARP: 415lb
 TENSILE STRENGTH WEFT: 415lb
 ABRASION RESISTANCE: > 10000(ASTM D 4966)
 COLOR FASTNESS TO LIGHT: Class 5.0
 FLAMMABILITY: Class 1
 ROLL LENGTH: 30 M

NFPA 701 (USA)
B S 5867-2 (U·K)


Alternative for




Anti Bacteria




UV resistance




Lead Free




Energy Saving



5 YEAR WARRANTY



NFPA 701(USA)
BS 5867-2(U·K)



RoHS
COMPLIANT



2103

6%
Openness Factor

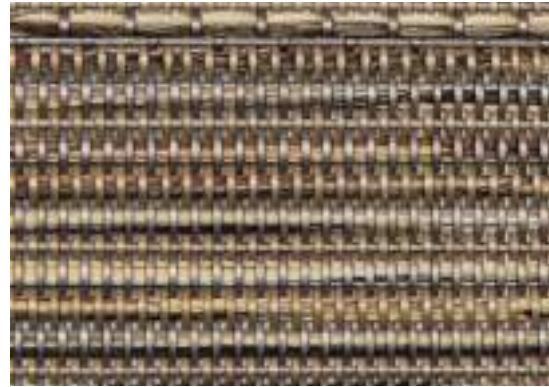


2103-4

Sun Screen



2103-1



2103-4



2103-2



2103-5



2103-3



2103-6

Solar Energetic Properties

Ulterio European Standard EN 14501 Calculation G-value according to EN13363-1+A1:2007	SOLAR ENERGETIC PROPERTIES					VISUAL PROPERTIES
	FABRIC			FABRIC + GLAZING		
				INTERIOR		
	G-factor = total solar energy transmittance					
Color Code	Ts	Rs	As	C:gv = 0.59	D:gv = 0.32	Tv
2103-1	26	59	15	0.38	0.26	23
2103-2	27	56	17	0.39	0.26	24
2103-3	-	-	-	-	-	-
2103-4	-	-	-	-	-	-
2103-5	-	-	-	-	-	-
2103-6	-	-	-	-	-	-

Technical Parameter

COMPOSITION:

POLYESTER 50%+PVC 50%

WIDTH:

250/300CM

WEIGHT:

520g/m²±5%

OPENNESS FACTOR:

AVERAGE 6%

THICKNESS:

1.00mm


COLOR FASTNESS TO LIGHT:

Class 5.0


NFPA 701 (USA)

B S 5867-2 (U·K)


Alternative for




Anti Bacteria




UV resistance




Lead Free




Energy Saving



5 YEAR WARRANTY



NFPA 701(USA)
BS 5867-2(U·K)



RoHS COMPLIANT



LP080

6%
Openness Factor



LP080-4

Sun Screen



LP080-1



LP080-6



LP080-2



LP080-5



LP080-3



LP080-7



LP080-4

Solar Energetic Properties

Ulterio European Standard EN 14501 Calculation G-value according to EN13363-1+A1:2007	SOLAR ENERGETIC PROPERTIES					VISUAL PROPERTIES
	FABRIC			FABRIC + GLAZING		
				INTERIOR		
	G-factor = total solar energy transmittance					
Color Code	Ts	Rs	As	C:gv = 0.59	D:gv = 0.32	Tv
LP080-1	31	52	17	0.40	0.26	29
LP080-2	24	47	29	0.42	0.27	20
LP080-3	-	-	-	-	-	-
LP080-4	15	26	58	0.48	0.28	12
LP080-5	12	25	62	0.48	0.28	10
LP080-6	6	18	76	0.50	0.29	5
LP080-7	6	17	77	0.50	0.29	4

Technical Parameter

COMPOSITION:

POLYESTER 50%+PVC 50%

WIDTH:

250/300CM

WEIGHT:

525g/m²±5%

OPENNESS FACTOR:

AVERAGE 6%

THICKNESS:

0.95mm

TENSILE STRENGTH WARP:

410lb

TENSILE STRENGTH WEFT:

380lb

ABRASION RESISTANCE:

> 10000(ASTM D 4966)

COLOR FASTNESS TO LIGHT:

Class 5.0


FLAMMABILITY:

Class 1


NFPA 701 (USA)

BS 5867-2 (U·K)


Alternative for




Anti Bacteria




UV resistance




Lead Free




Energy Saving



5 YEAR WARRANTY



NFPA 701 (USA)
BS 5867-2 (U·K)



RoHS
COMPLIANT



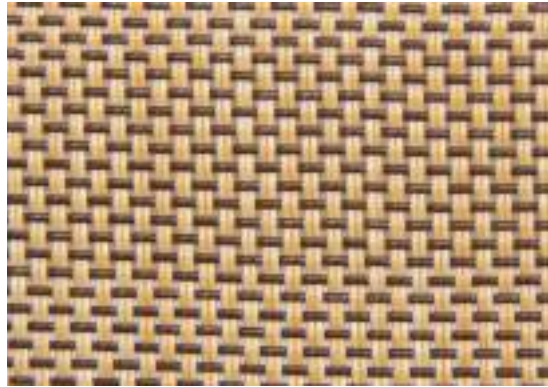
2097

7%
Openness Factor



2097-2

Sun Screen



2097-3



2097-2



2097-1

Solar Energetic Properties

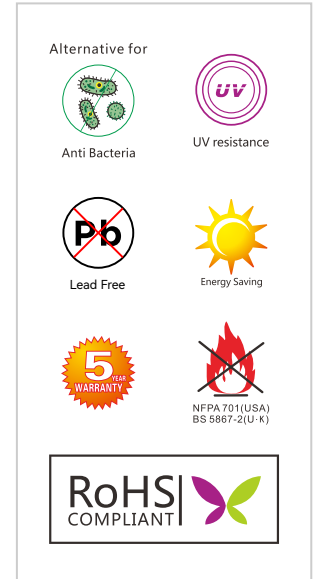
Ulterio European Standard EN 14501 Calculation G-value according to EN13363-1+A1:2007	SOLAR ENERGETIC PROPERTIES					VISUAL PROPERTIES
	FABRIC			FABRIC + GLAZING		
				INTERIOR		
	G-factor = total solar energy transmittance					
Color Code	Ts	Rs	As	C:gv = 0.59	D:gv = 0.32	Tv
2097-1	10	25	65	0.48	0.28	8
2097-2	12	16	72	0.51	0.29	11
2097-3	18	25	57	0.48	0.28	14

Technical Parameter

COMPOSITION:	POLYESTER 30%+PVC 70%
WIDTH:	160/200/250/300CM
WEIGHT:	430g/m ² ±5%
OPENNESS FACTOR:	AVERAGE 7%
YARN COUNT WARP:	0.44mm
YARN COUNT WEFT:	0.44mm
FABRIC COUNT WARP:	22/inch
FABRIC COUNT WEFT:	40/inch
THICKNESS:	0.70mm
TENSILE STRENGTH WARP:	380lb
TENSILE STRENGTH WEFT:	380lb
ABRASION RESISTANCE:	> 10000(ASTM D 4966)
COLOR FASTNESS TO LIGHT:	Class 5.0
FLAMMABILITY:	Class 1
ROLL LENGTH:	30 M

NFPA 701 (USA)

B S 5867-2 (U·K)





2074

8%
Openness Factor



2074-2

Sun Screen



2074-1



2074-2



2074-3

Solar Energetic Properties

Ulterio European Standard EN 14501 Calculation G-value according to EN13363-1+A1:2007	SOLAR ENERGETIC PROPERTIES					VISUAL PROPERTIES
	FABRIC			FABRIC + GLAZING		
				INTERIOR		
	G-factor = total solar energy transmittance					
Color Code	Ts	Rs	As	C:gv = 0.59	D:gv = 0.32	Tv
2074-1	22	67	11	0.35	0.25	19
2074-2	18	58	24	0.38	0.26	16
2074-3	15	51	34	0.40	0.26	13


Technical Parameter

COMPOSITION:	POLYESTER 30%+PVC 70%
WIDTH:	200/250/300CM
WEIGHT:	410g/m ² ±5%
OPENNESS FACTOR:	AVERAGE 8%
YARN COUNT WARP:	0.34mm
YARN COUNT WEFT:	0.44mm
FABRIC COUNT WARP:	48/inch
FABRIC COUNT WEFT:	26/inch
THICKNESS:	0.56mm
TENSILE STRENGTH WARP:	380lb
TENSILE STRENGTH WEFT:	380lb
ABRASION RESISTANCE:	> 10000(ASTM D 4966)
COLOR FASTNESS TO LIGHT:	Class 5.0
FLAMMABILITY:	Class 1
ROLL LENGTH:	30 M


NFPA 701 (USA)

B S 5867-2 (U·K)


Alternative for




Anti Bacteria




UV resistance




Lead Free




Energy Saving



5 YEAR WARRANTY



NFPA 701 (USA)
BS 5867-2 (U·K)



RoHS
COMPLIANT



2080

8%

Openness Factor

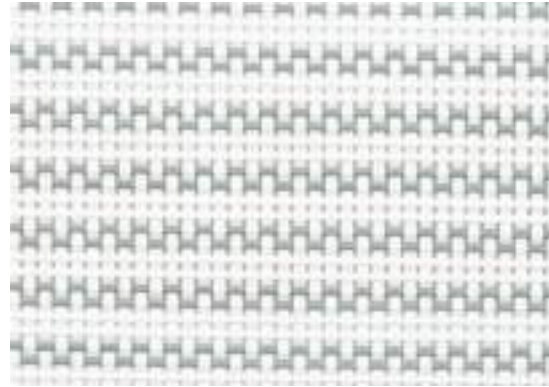


2080-3

Sun Screen



2080-1



2080-2



2080-3



2080-4

Solar Energetic Properties

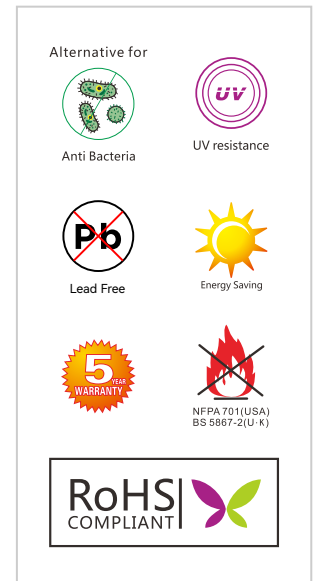
Ulterio European Standard EN 14501 Calculation G-value according to EN13363-1+A1:2007	SOLAR ENERGETIC PROPERTIES					VISUAL PROPERTIES
	FABRIC			FABRIC + GLAZING		
				INTERIOR		
	G-factor = total solar energy transmittance					
Color Code	Ts	Rs	As	C:gv = 0.59	D:gv = 0.32	Tv
2080-1	23	57	20	0.38	0.26	19
2080-2	21	55	24	0.39	0.26	18
2080-3	23	64	13	0.36	0.25	19
2080-4	17	48	35	0.41	0.26	14

Technical Parameter

COMPOSITION:	POLYESTER 30%+PVC 70%
WIDTH:	160/200/250/300CM
WEIGHT:	400g/m ² ±5%
OPENNESS FACTOR:	AVERAGE 8%
YARN COUNT WARP:	0.34mm
YARN COUNT WEFT:	0.44mm
FABRIC COUNT WARP:	48/inch
FABRIC COUNT WEFT:	26/inch
THICKNESS:	0.57mm
TENSILE STRENGTH WARP:	410lb
TENSILE STRENGTH WEFT:	450lb
ABRASION RESISTANCE:	> 10000(ASTM D 4966)
COLOR FASTNESS TO LIGHT:	Class 5.0
FLAMMABILITY:	Class 1
ROLL LENGTH:	30 M

NFPA 701 (USA)

B S 5867-2 (U·K)





S10

10%
Openness Factor



S10-2

Sun Screen



S10-1(2106-3)



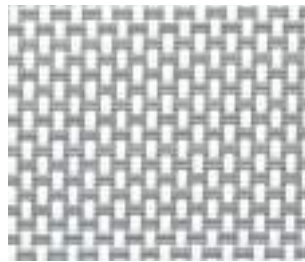
S10-(2106-2)



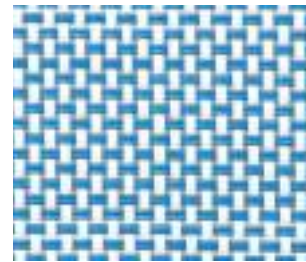
S10-2



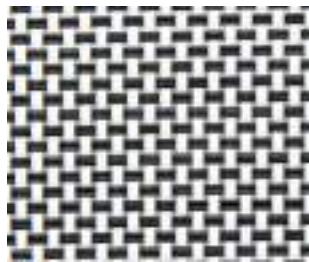
S10-3



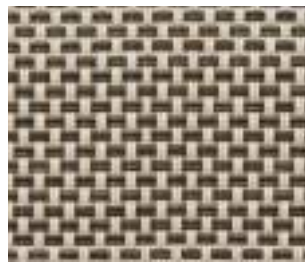
S10-4(2106-4)



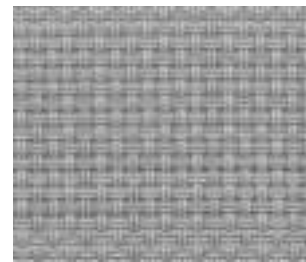
S10-5



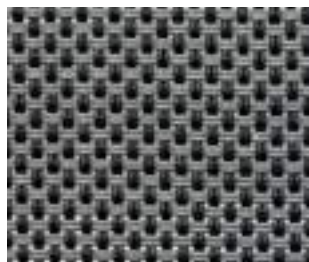
S10-6(2106-6)



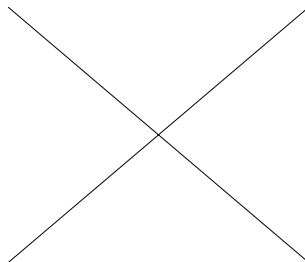
S10-7



S10-8



S10-9



S10-10



S10-11

Solar Energetic Properties

Ulterio European Standard EN 14501 Calculation G-value according to EN13363-1+A1:2007	SOLAR ENERGETIC PROPERTIES					VISUAL PROPERTIES
	FABRIC			FABRIC + GLAZING		
				INTERIOR		
	G-factor = total solar energy transmittance					
Color Code	Ts	Rs	As	C:gv = 0.59	D:gv = 0.32	Tv
S10-1(2106-3)	20	67	13	0.35	0.25	17
S10-2	22	54	24	0.39	0.26	19
S10-3	28	53	19	0.40	0.26	24
S10-4(2106-4)	17	39	44	0.44	0.27	15
S10-5	-	-	-	-	-	-
S10-6(2106-6)	16	29	55	0.47	0.28	15
S10-7	-	-	-	-	-	-
S10-8	16	27	57	0.48	0.28	12
S10-9	14	11	75	0.53	0.30	13
S10-10	11	6	83	0.54	0.30	11
S10-11	14	4	82	0.54	0.30	14

Technical Parameter

COMPOSITION: POLYESTER 35%+PVC 65%

WIDTH: 160/200/250/300CM

WEIGHT: 370g/m²±5%

OPENNESS FACTOR: AVERAGE 10%

YARN COUNT WARP: 0.34mm

YARN COUNT WEFT: 0.34mm

FABRIC COUNT WARP: 40/inch

FABRIC COUNT WEFT: 40/inch

THICKNESS: 0.55mm

TENSILE STRENGTH WARP: 380lb

TENSILE STRENGTH WEFT: 380lb

ABRASION RESISTANCE: > 10000(ASTM D 4966)

COLOR FASTNESS TO LIGHT: Class 5.0

FLAMMABILITY: Class 1

ROLL LENGTH: 30 M

NFPA 701 (USA)
BS 5867-2 (U.K)

Alternative for

Anti Bacteria

UV resistance

Lead Free

Energy Saving

5 YEAR WARRANTY

NFPA 701 (USA)
BS 5867-2 (U.K)

RoHS COMPLIANT

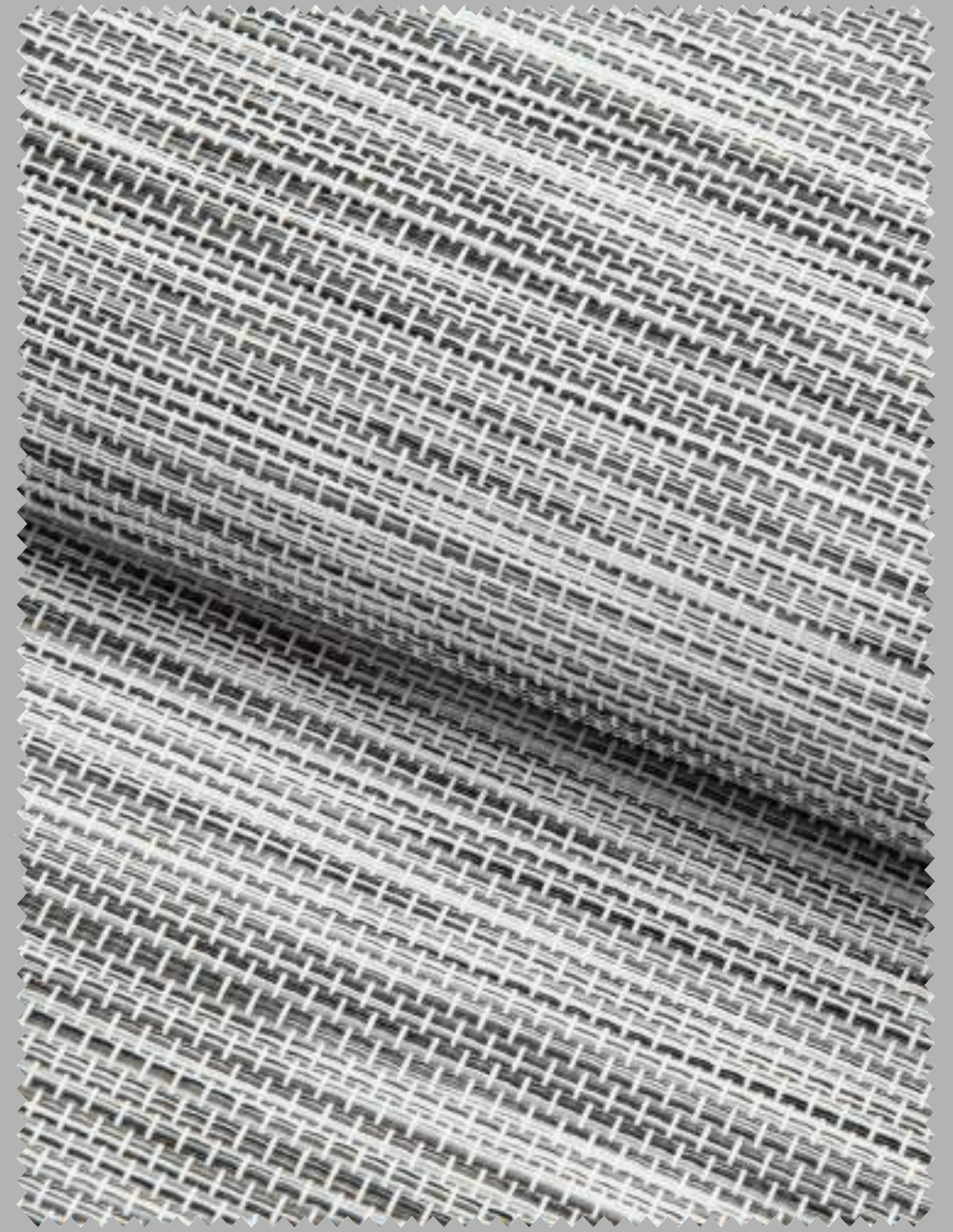


中国建材认证
产品节能

2092

10%

Openness Factor

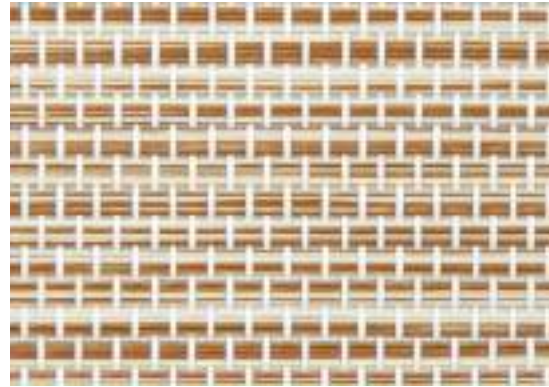


2092-4

Sun Screen



2092-1



2092-2



2092-3



2092-4

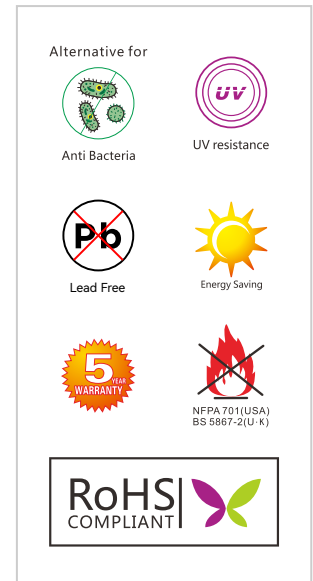
Solar Energetic Properties

Ulterio European Standard EN 14501 Calculation G-value according to EN13363-1+A1:2007	SOLAR ENERGETIC PROPERTIES					VISUAL PROPERTIES
	FABRIC			FABRIC + GLAZING		
				INTERIOR		
	G-factor = total solar energy transmittance					
Color Code	Ts	Rs	As	C:gv = 0.59	D:gv = 0.32	Tv
2092-1	14	50	36	0.40	0.26	11
2092-2	18	55	27	0.39	0.26	14
2092-3	14	47	39	0.41	0.26	13
2092-4	17	45	38	0.42	0.27	16

Technical Parameter

COMPOSITION:	POLYESTER 30%+PVC 70%
WIDTH:	160/200/250/300CM
WEIGHT:	430g/m ² ±5%
OPENNESS FACTOR:	AVERAGE 10%
YARN COUNT WARP:	0.34mm
YARN COUNT WEFT:	0.45mm
FABRIC COUNT WARP:	20/inch
FABRIC COUNT WEFT:	52/inch
THICKNESS:	0.70mm
TENSILE STRENGTH WARP:	380lb
TENSILE STRENGTH WEFT:	410lb
ABRASION RESISTANCE:	> 10000(ASTM D 4966)
COLOR FASTNESS TO LIGHT:	Class 5.0
FLAMMABILITY:	Class 1
ROLL LENGTH:	30 M

NFPA 701 (USA)
B S 5867-2 (U·K)

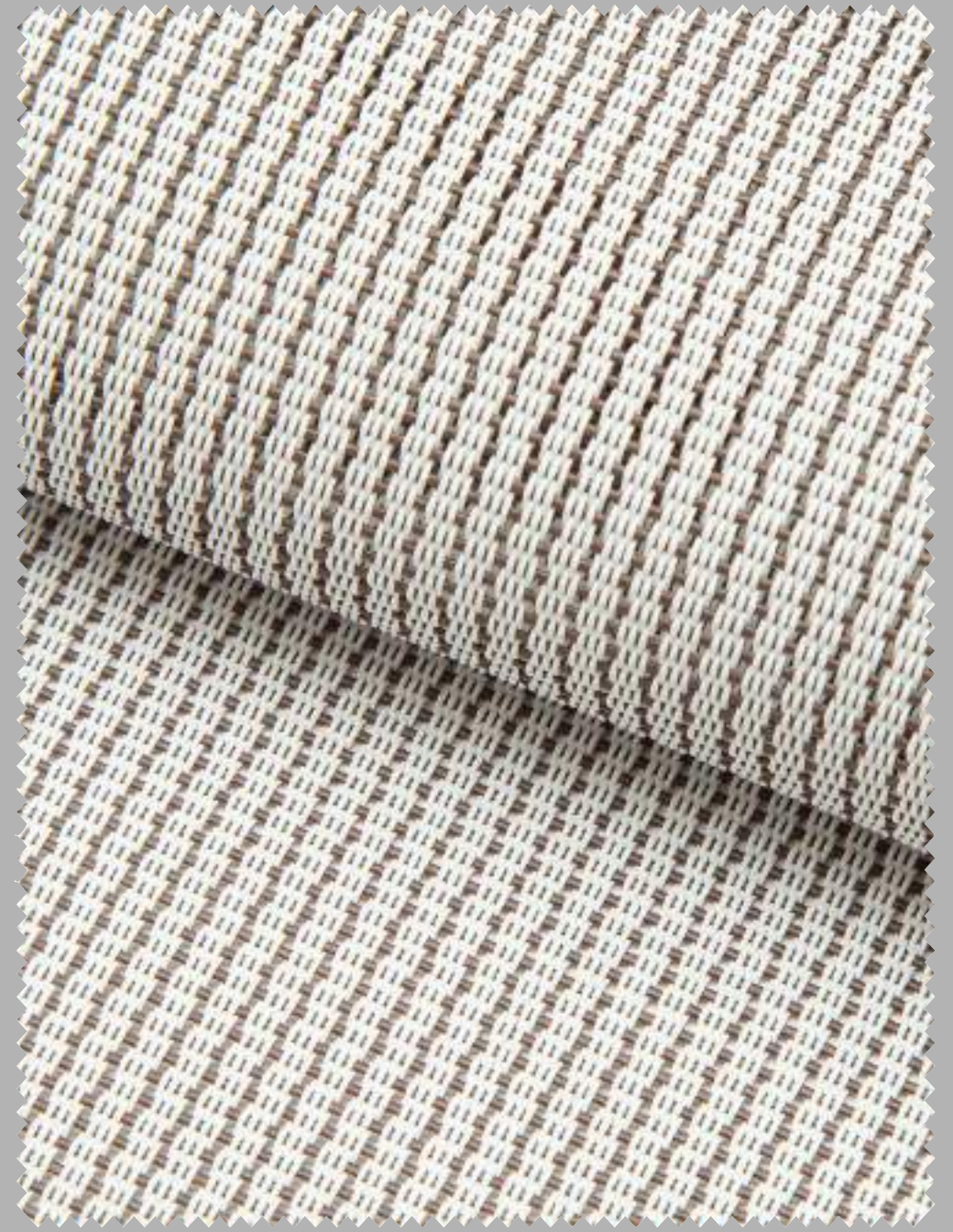




2075

12%

Openness Factor



2075-4

Sun Screen



2075-1



2075-3



2075-2



2075-4

Solar Energetic Properties

Ulterio European Standard EN 14501 Calculation G-value according to EN13363-1+A1:2007	SOLAR ENERGETIC PROPERTIES					VISUAL PROPERTIES
	FABRIC			FABRIC + GLAZING		
				INTERIOR		
	G-factor = total solar energy transmittance					
Color Code	Ts	Rs	As	C:gv = 0.59	D:gv = 0.32	Tv
2075-1	25	65	10	0.36	0.25	23
2075-2	19	54	27	0.39	0.26	17
2075-3	19	50	31	0.33	0.24	17
2075-4	17	41	42	0.43	0.27	16


Technical Parameter

COMPOSITION:	POLYESTER 35%+PVC 65%
WIDTH:	160/200/250/300CM
WEIGHT:	460g/m ² ±5%
OPENNESS FACTOR:	AVERAGE 12%
YARN COUNT WARP:	0.34mm
YARN COUNT WEFT:	0.60mm
FABRIC COUNT WARP:	56/inch
FABRIC COUNT WEFT:	16/inch
THICKNESS:	0.86mm
TENSILE STRENGTH WARP:	380lb
TENSILE STRENGTH WEFT:	440lb
ABRASION RESISTANCE:	> 10000(ASTM D 4966)
COLOR FASTNESS TO LIGHT:	Class 5.0
FLAMMABILITY:	Class 1
ROLL LENGTH:	30 M


NFPA 701 (USA)

B S 5867-2 (U·K)


Alternative for




Anti Bacteria




UV resistance




Lead Free




Energy Saving



5 YEAR WARRANTY



NFPA 701(USA)
BS 5867-2(U·K)



RoHS
COMPLIANT



2220

0%
Openness Factor



2220-1

Sun Screen



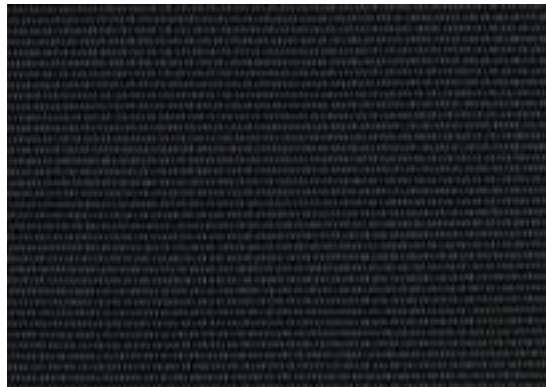
2220-1



2220-4



2220-2



2220-5



2220-3

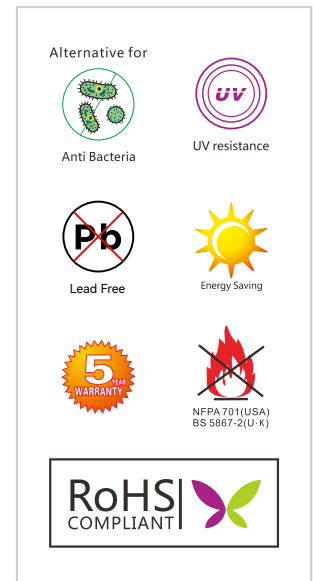
Solar Energetic Properties

Ulterio European Standard EN 14501 Calculation G-value according to EN13363-1+A1:2007	SOLAR ENERGETIC PROPERTIES					VISUAL PROPERTIES
	FABRIC			FABRIC + GLAZING		
				INTERIOR		
	G-factor = total solar energy transmittance					
Color Code	Ts	Rs	As	C:gv = 0.59	D:gv = 0.32	Tv
2220-1	0	26	74	0.47	0.28	15
2220-2	0	21	79	0.49	0.28	15
2220-3	0	10	90	0.52	0.29	15
2220-4	0	5	95	0.54	0.30	15
2220-5	0	5	95	0.54	0.30	15

Technical Parameter

COMPOSITION:	POLYESTER 25%+PVC 75%
WIDTH:	200/250/300CM
WEIGHT:	630g/m ² ±5%
OPENNESS FACTOR:	AVERAGE 0%
YARN COUNT WARP:	0.34mm
YARN COUNT WEFT:	0.44mm
FABRIC COUNT WARP:	28/inch
FABRIC COUNT WEFT:	27/inch
THICKNESS:	0.75mm
TENSILE STRENGTH WARP:	140N WEFT:100N
ABRASION RESISTANCE WARP:	1700N WEFT:1900N
COLOR FASTNESS TO LIGHT:	7~8 (BLUE SCALE)
FLAMMABILITY:	GB 8624 B1

NFPA 701 (USA)
BS 5867-2 (U·K)

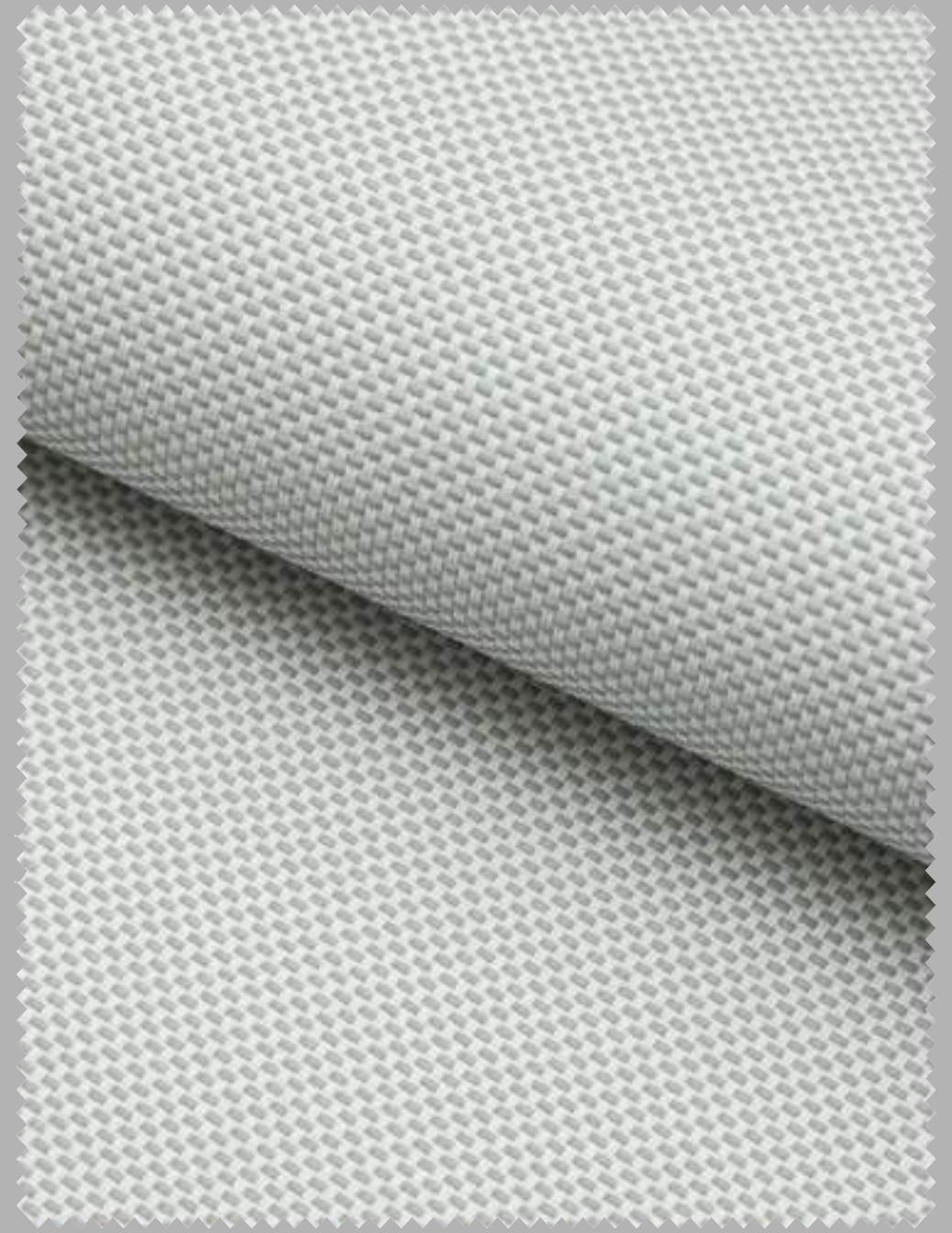




中国建材认证
产品节能

2074BO

100%
Blackout Screen



2074BO-3

Sun Screen



2074BO-1



2074BO-2



2074BO-3

Solar Energetic Properties

Ulterio European Standard EN 14501 Calculation G-value according to EN13363-1+A1:2007	SOLAR ENERGETIC PROPERTIES					VISUAL PROPERTIES
	FABRIC			FABRIC + GLAZING		
				INTERIOR		
	G-factor = total solar energy transmittance					
Color Code	Ts	Rs	As	C:gv = 0.59	D:gv = 0.32	Tv
2074BO-1	0	87	13	0.28	0.23	0
2074BO-2	0	47	53	0.41	0.26	0
2074BO-3	0	32	68	0.45	0.27	0

Technical Parameter

COMPOSITION:	POLYESTER 30%+PVC 70%
WIDTH:	200/250/300CM
WEIGHT:	630g/m ² ±5%
BLACKOUT RATE	100%
YARN COUNT WARP:	0.34mm
YARN COUNT WEFT:	0.44mm
FABRIC COUNT WARP:	48/inch
FABRIC COUNT WEFT:	26/inch
THICKNESS:	0.75mm
TENSILE STRENGTH WARP:	380lb
TENSILE STRENGTH WEFT:	380lb
ABRASION RESISTANCE:	> 10000(ASTM D 4966)
COLOR FASTNESS TO LIGHT:	Class 5.0
FLAMMABILITY:	Class 1
ROLL LENGTH:	30 M

NFPA 701 (USA)

B S 5867-2 (U·K)

